

Mutina

Mutina America



**Curated domestic stock Program
for the US Market**

About Mutina

For over ten years, Mutina has been promoting an enhancement process of the ceramic matter that combines design and art, in a course of experimentation and mutual contamination. Working side by side with designers, architects and artists, observing them, supporting them has always been the driving force of the company. The resulting exchange – creative, design-driven, human – has a fundamental impact on all the projects that come to life in Mutina, whether it is a collection of ceramic wall tiles, a group exhibition of contemporary art or a collaboration on a large-scale architectural project.



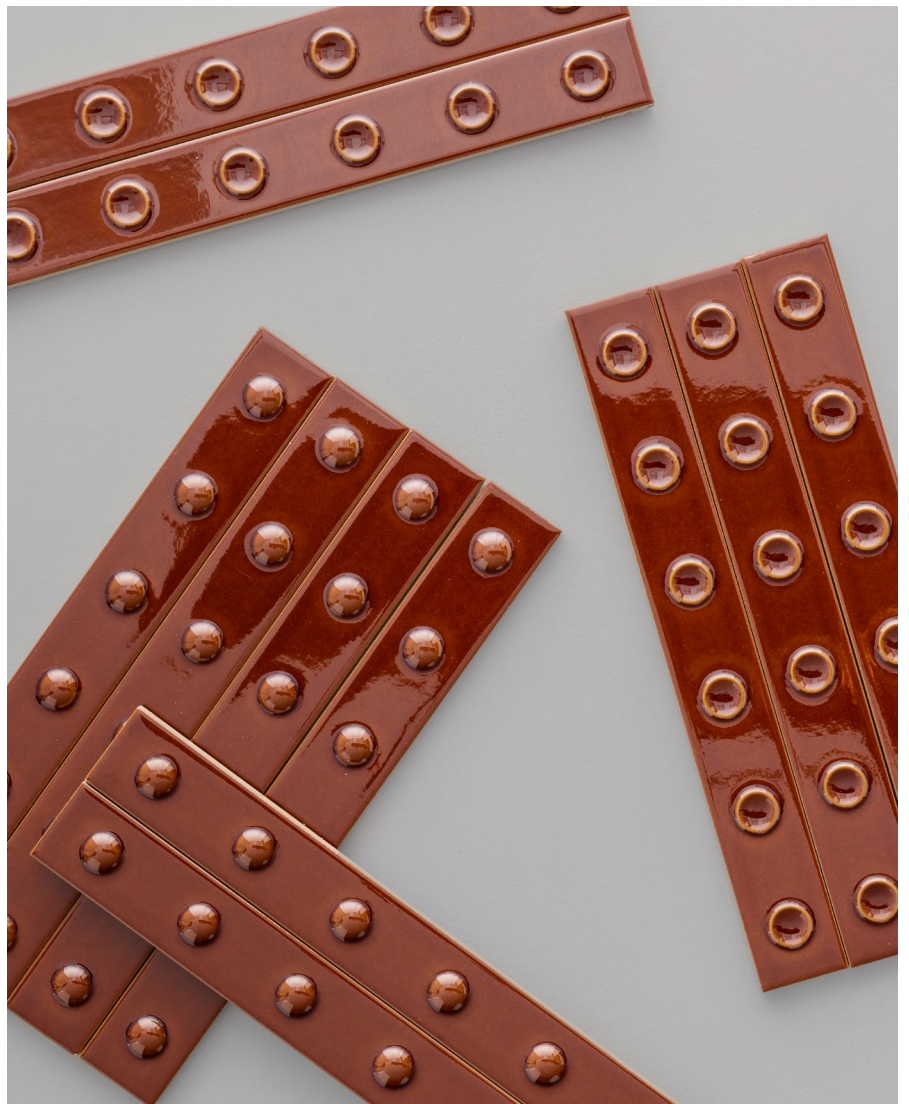
Mutina America

Stock to support Brand Partners

Mutina America Stock includes some of the best sellers worldwide. Brand Partners can support quick sales on these items now also from a local domestic source. Mutina America gets even closer to the Brand Partners.

Curated domestic stock program for the US Market

The Mutina America Program includes floor and wall combinations that can be designed as a single item design or a combination of various items. The purpose is to have a “ready-easy-to-go” Program for multiple spaces in the home. We suggest combinations of the different materials to enhance the possibilities within a domestically stocked Program.



Collections

Kosei

Vincent Van Duysen

Mews

Edward Barber & Jay Osgerby

Phenomenon

Tokujiin Yoshioka

Punto

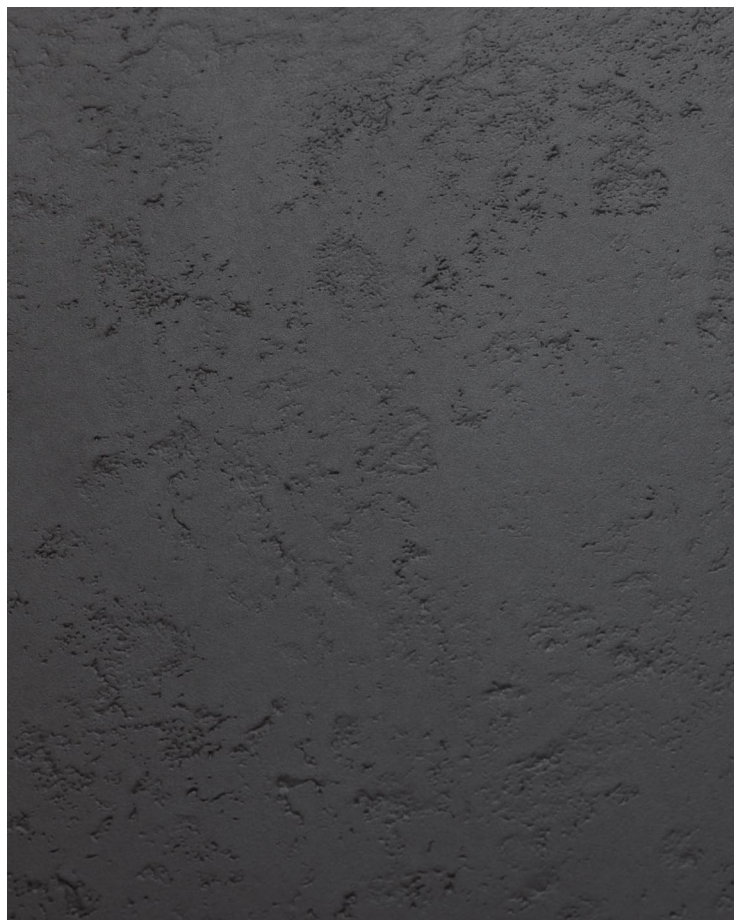
Ronan & Erwan Bouroullec

Rombini

Ronan & Erwan Bouroullec

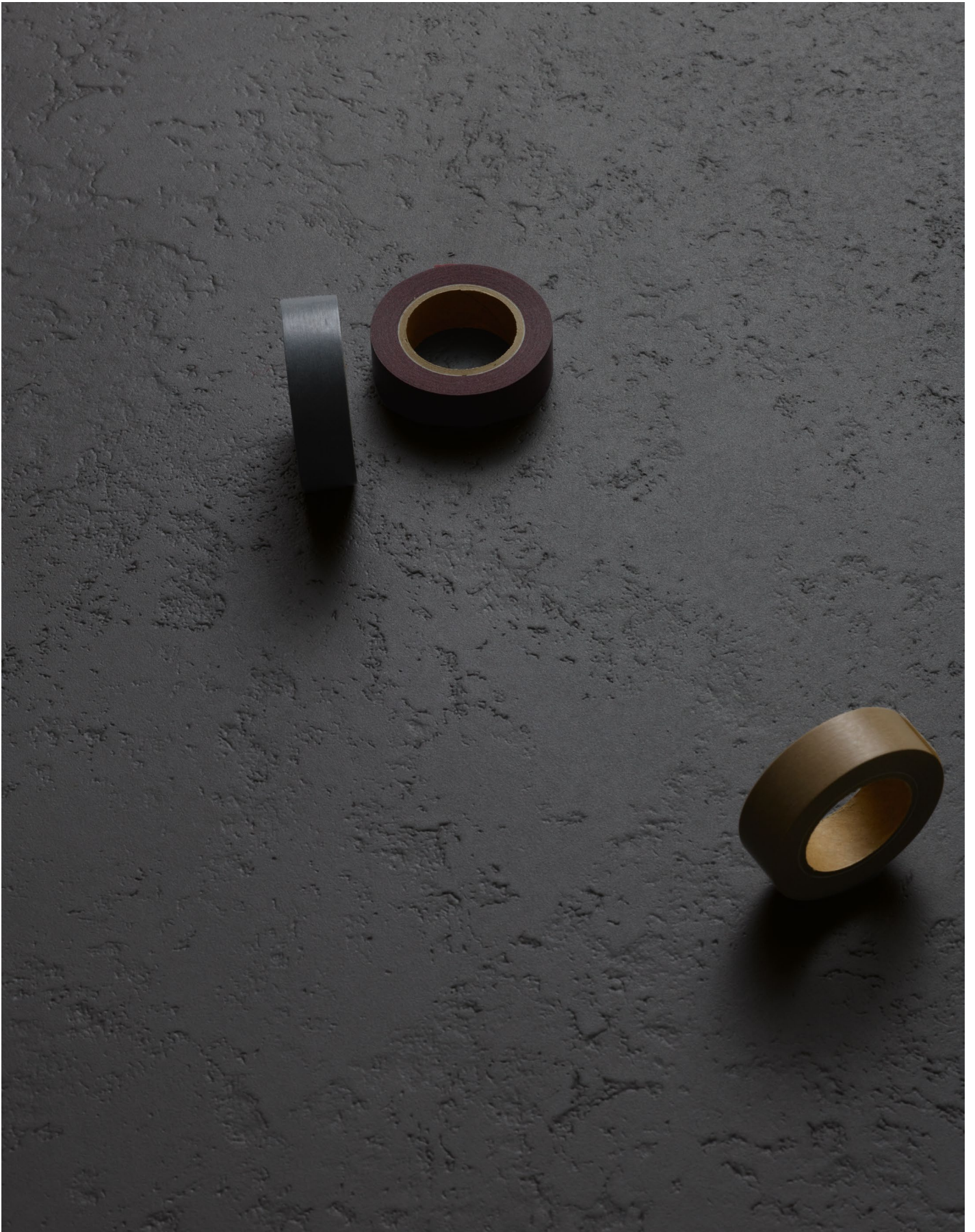
Kosei

Vincent Van Duysen

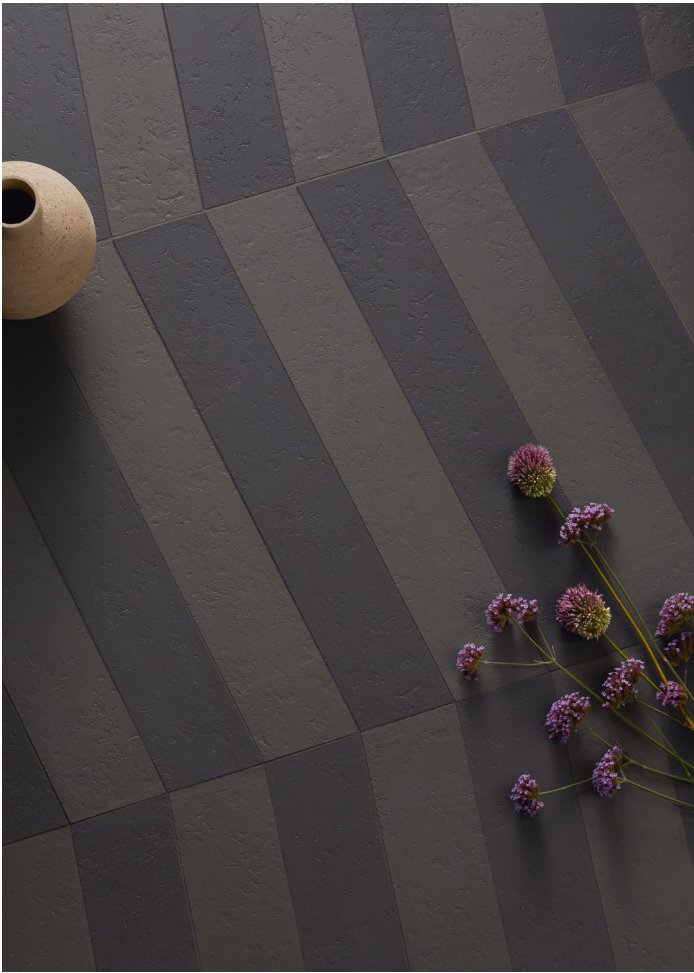


With Kosei – which means composition in Japanese – Vincent Van Duysen proposes a range of ceramic surfaces developed with pure and tactile materials, inspired by lava rocks such as obsidian and volcanic glasses, which are homogeneous, amorphous and with exceptional hardness. The end result is a timeless design conceived for “grand” architecture, featuring a colour palette of 5 shades that can be combined for a progressively decorative taste. Kosei has been specifi-

cally conceived for floors, both indoors and outdoors. The collection range presents a 24”x24” format, with a soft texture, and the Chevron module, available in size 4”x22”, that has been created to lend depth to surfaces. The elements allow to design elegant matt surfaces, also by alternating the available colours – Bone, Storm, Terra, Grey Green and Dark Grey –, creating different harmonious yet dynamic compositions.



Kosei Dark Grey



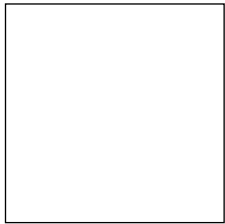
Kosei Chevron Grey Green, Dark Grey



Kosei Chevron Grey Green

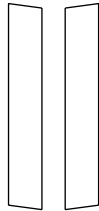
Technical Features

collection	Kosei
design	Vincent Van Duysen, 2022
production	Industrial
material	Extruded unglazed porcelain stoneware
thickness	0.39"
nominal sizes	24" · 24", chevron: 4" · 22"
specification	5 colours: Bone, Storm, Terra, Grey Green, Dark Grey
category	UNI EN 14411 App A (AI group) UGL



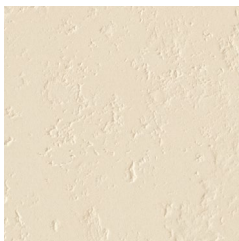
24" · 24"

SX DX



Chevron
4" · 22"

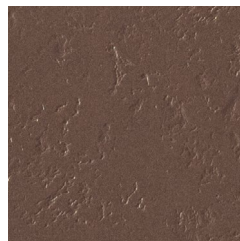
Colors



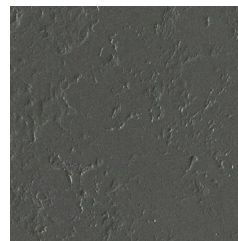
Bone



Storm



Terra



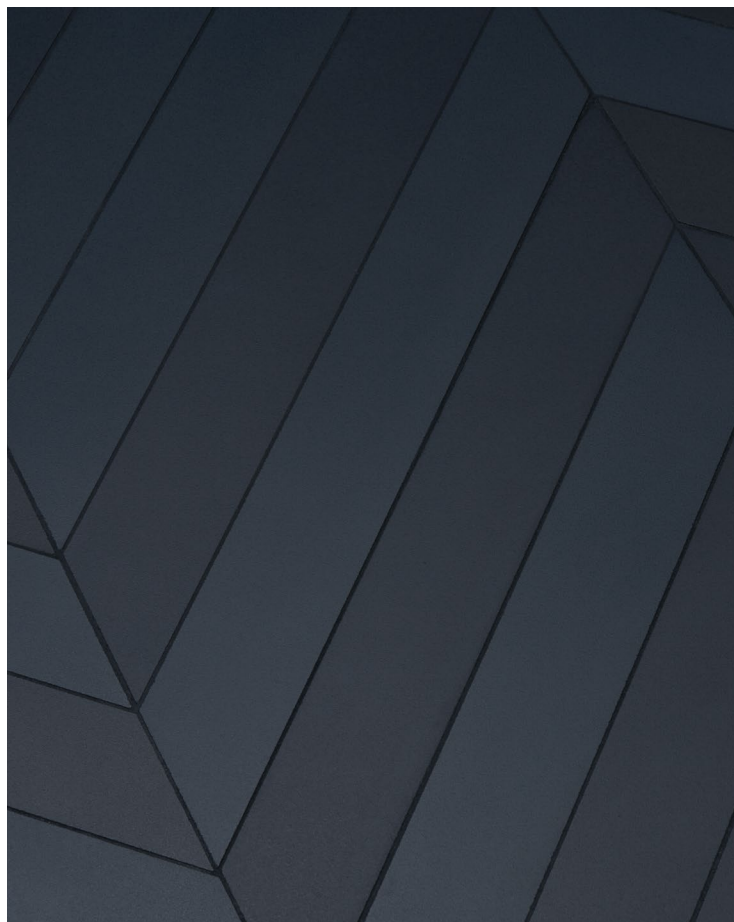
Grey Green



Dark Grey

Mews

Edward Barber & Jay Osgerby

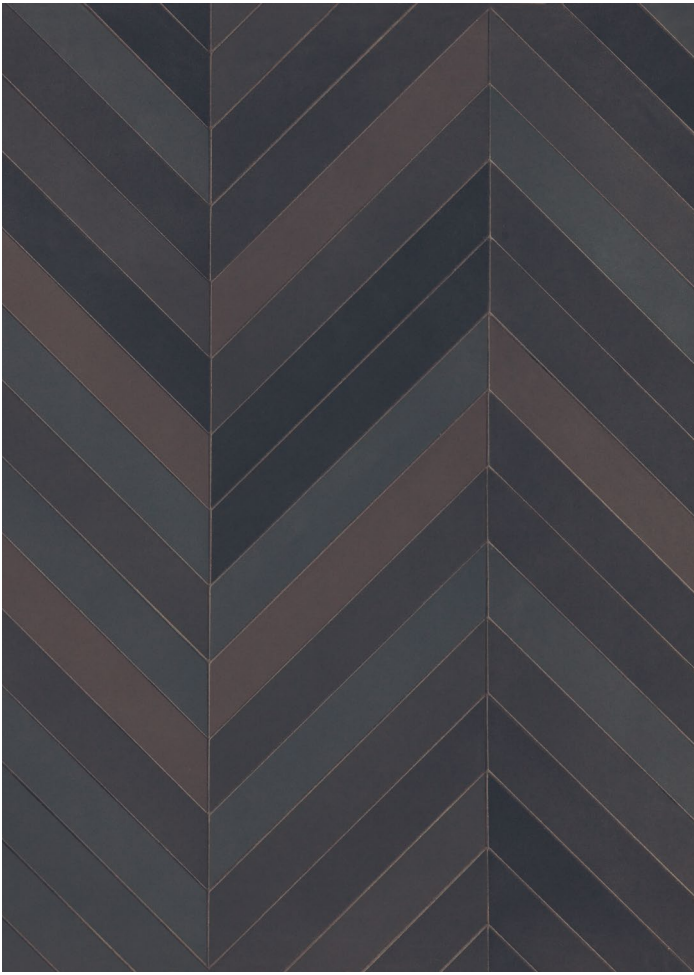


Mews, a term referring to the narrow alleys in London's historic centre with their unique and picturesque aesthetic, is inspired by urban landscape, history, and textures of the English capital. These details merge, creating pleasantly vibrant geometric compositions. The collection is the result of a long experimentation on colour, which led to the creation of a palette of two shades: Ink and Soot, each of which is further divided into over 15 different tones, imparting a sense of depth and

movement to the surfaces. Mews is made of glazed porcelain stoneware with mass-coloured mixture according to an industrial process. The wide range of neutral shades allows the use of the elements both as a focal point of a space and as a background for interiors of all kinds.



Mews Chevron Soot



Mews Chevron Soot



Mews Chevron Ink

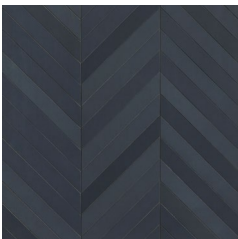
Technical Features

collection	Mews
design	Edward Barber & Jay Osgerby, 2013, 2023
production	Industrial
material	Glazed homogeneous porcelain stoneware
features	Cut pieces each one exactly the same as the others
thickness	0.35"
nominal sizes	chevron 2"·16"
specification	– 2 Colours – Each colour composed by a random mix of 15 shades to obtain a softly shaded surface
awards	Wallpaper Design Award 2014, Edida 2014
patents	Registered design n° 002336909-0005/0012 – date of registration: 31/10/2013
category	UNI EN 14411 App G (BIA group)

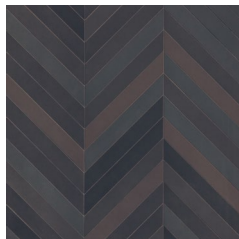


2"·16" chevron

Colors



Ink



Soot

Phenomenon

Tokujin Yoshioka



Phenomenon stems from the desire to incorporate natural phenomena and the laws of nature into a contemporary design project, not simply for reproducing their aspect but to evoke an emotion. The collection evokes memories of natural sceneries and individual experiences of the natural world, through patterns such as honeycombs, snowflakes, sticks of

ice and plant cells. The Rain B and Air modules are available in 3 matt colours – Bianco, Nero and Blu. Thanks to the combination of small materials and neutral shades, which create poetic and evocative compositions, Phenomenon gives the interiors an effect of vastness and depth.



Phenomenon Rain B Nero



Phenomenon Rain B Blu

Technical Features

Phenomenon Rain B, Phenomenon Air

collection	Phenomenon
design	Tokujiin Yoshioka, 2010 – 2013 – 2022
production	Artisanal
material	Homogeneous unglazed porcelain stoneware straws, obtained by pressing and fixed on net
thickness	RAIN B: min 0.20" – max 0.27" AIR: 0.31"
nominal sizes	RAIN B: net 9 7/8" · 12" AIR: net 12" · 12"
specification	<ul style="list-style-type: none">– 3 colours: Bianco, Nero, Blu– The mosaic is assembled in sheets to give a "handmade look" to the surface and it represents the finest of modern-day Italian craftsmanship.– Each mosaic card is individually pressed with a bespoke 100-holes mould, expressly created to achieve a materic and artisanal feeling, then fired through a bespoke, patented, process.– Mutina patented production process and machines (Industrial Patent filed on 02/09/2010 under number MO2010A000247)– The cards are manually assembled accurately by expert hands to build a unique, innovative pattern.
awards	ICFF Editors Award Material 2011, Wallpaper Design Award 2011, Edida 2011, Selected for Adi Design Index 2011, Love Tag Azure Magazine 2012, Red Dot Design Award 2012, Interior Innovation Award 2014, Best of Best 2014
patents	Registered design n° 001912999-0011 – date of registration: 06/09/2011
category	UNI EN 14411 App G (BIA group) UGL

Colors

RAIN B



Rain B Bianco



Rain B Nero



Rain B Blu

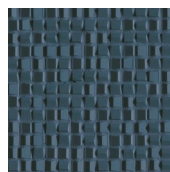
AIR



Air Bianco



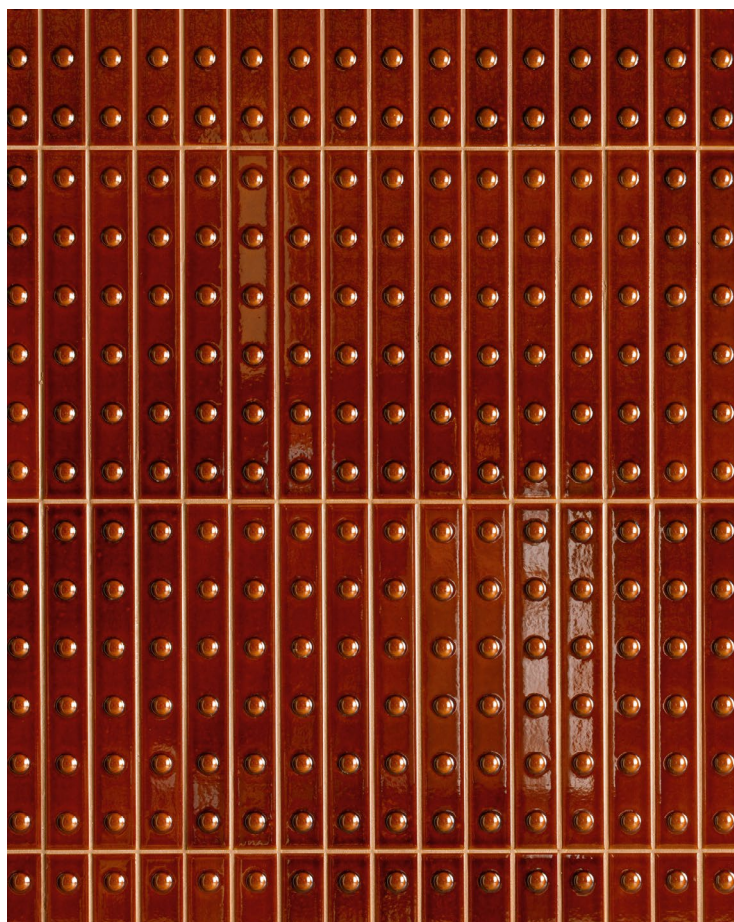
Air Nero



Air Blu

Punto

Ronan & Erwan Bouroullec



Developed from the concept that inspired Pico collection, Punto is a three-dimensional decorative element that can be used only on walls. The pattern is characterised by big sunken dots (Down) or elevated dots (Up) and finds its highest expression when used on large surfaces. Depending on how light hits the elements, they create unexpected chiaroscuro effects that enliven interiors. Both the Up and Down options are available in a single size of 12''x1,6'', provided on

meshes of five pieces each. The palette presents 3 colours in Glossy finish (Blanc, Vert and Brun), which is obtained by applying a transparent, polished and bright glaze. The traditional double-firing production technique enhanced the preciousness of surfaces, especially in the shades Vert and Brun where a reacting enamel typical of handcrafted pieces guaranteed an exceptional colour rendering.



Punto Down Glossy Vert



Punto Down Glossy Blanc



Punto Up Glossy Brun

Technical Features

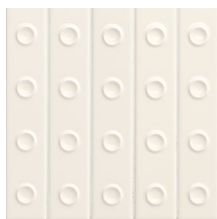
collection	Punto
design	Ronan & Erwan Bouroullec, 2021
production	Industrial
material	Glazed pressed body
thickness	Punto Down: 0,5" Punto Up: 0,5"
sizes	Punto Down: 5 pcs 12" · 1,6" · 0,5" on net: 8" · 12" Punto Up: 5 pcs 12" · 1,6" · 0,5" on net: 8" · 12"
specification	- 2 shapes: up and down - 1 glossy colors: blanc - 2 glossy colors with craquelé glaze: vert and brun
use	Wall – indoor
awards	Best of Year 2022
category	Bill UNI EN 14411 GL
patents	Registered design n° 009069826 – 001/0008 – date of registration: 27/06/2022

Colors

GLOSSY



Up Blanc



Down Blanc



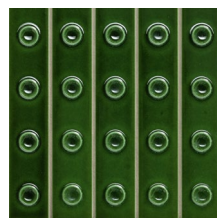
Up Brun



Down Brun



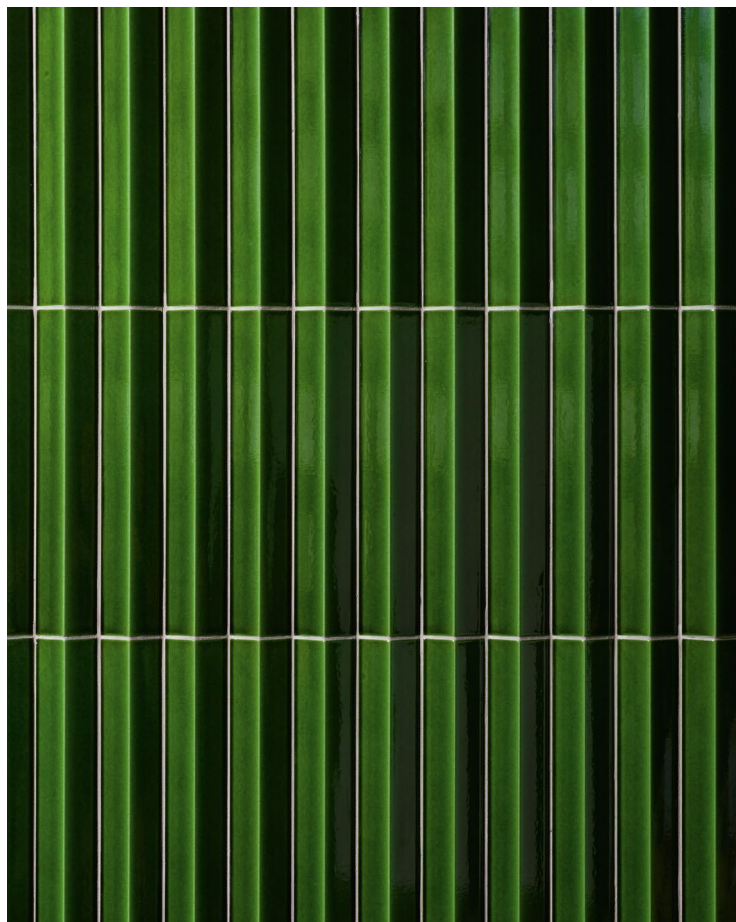
Up Vert



Down Vert

Rombini

Ronan & Erwan Bouroullec

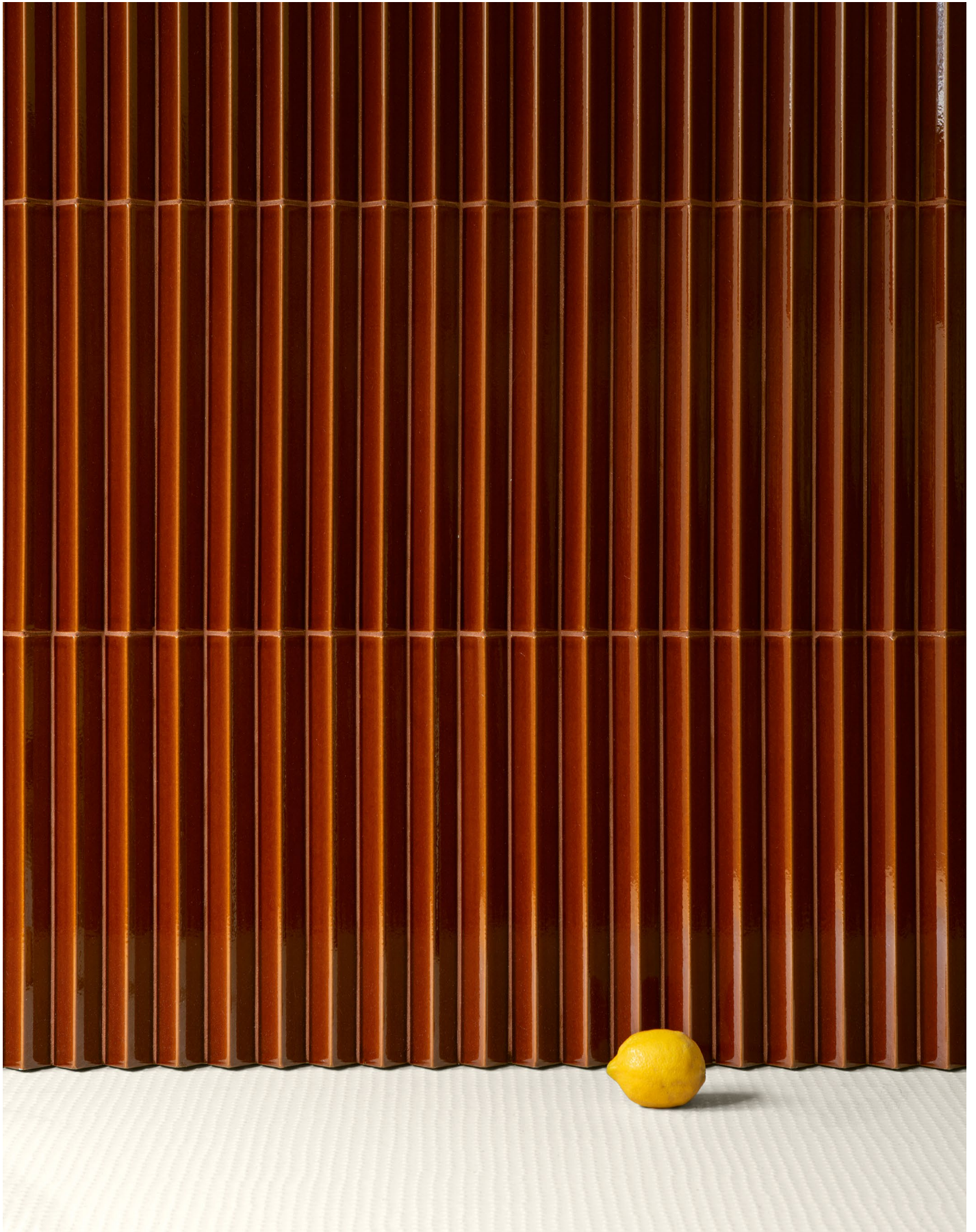


Rombini is a journey made of ceramic vibration, developed through a specific research of more than two years, which allowed to explore the world of colour and surfaces in an unprecedented way. The collection presents a great chromatic strength and has been conceived to provide the interiors an architectural aesthetic. The Triangle module in Small format is available in 3 matt colours – White, Green and Red – and

3 glossy ones – Blanc, Vert and Brun. Using the traditional double-firing production technique allowed to enhance the preciousness of surfaces, coated with a transparent, polished and bright glaze. Especially, the Vert and Brun shades are obtained by applying a reacting enamel typical of handcrafted pieces, that guaranteed an exceptional colour rendering.



Rombini Triangle Small Matt White



Rombini Triangle Small Glossy Brun

Technical Features

collection	Rombini
design	Ronan & Erwan Bouroullec, 2015, 2021
production	Industrial
material	Glazed pressed body
thickness	1"
nominal sizes	5 pcs 12".1".1", on net 7".12"
specification	With Triangle, the shape of the rhombus is interpreted in its three-dimensional shape, in order to create games of lights and shadow on the surface: the elements seem to arise from the floor and to carry on the wall covering. Triangle is obtain by press in special 3D mold, then glazed and assembled on net. This allow to use Triangle also on concave or convex curved surfaces.
use	Wall – indoor
complementary pieces	Terminal Extra Small, Small and Large in all colors and finishing. Listello in all colors and finishing.
awards	Archiproducts Design Award 2016
patents	Registered design n° 002889055-0019/0024 – date of registration: 03/12/2015
category	Triangle BIII UNI EN 14411 GL

Colors

TRIANGLE SMALL – GLOSSY



Blanc



Brun

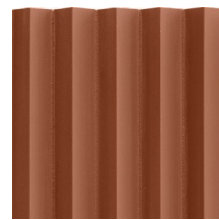


Vert

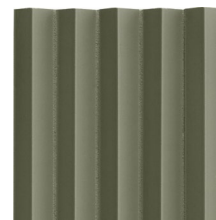
TRIANGLE SMALL – MATT



White



Red



Green

Combinations

With the elements of the Mutina America Program we propose some floor and wall combinations that can be designed as a single item design or a combination of various items.



1 Kosei Bone, Phenomenon Air Bianco, Rombini Triangle Small Matt White

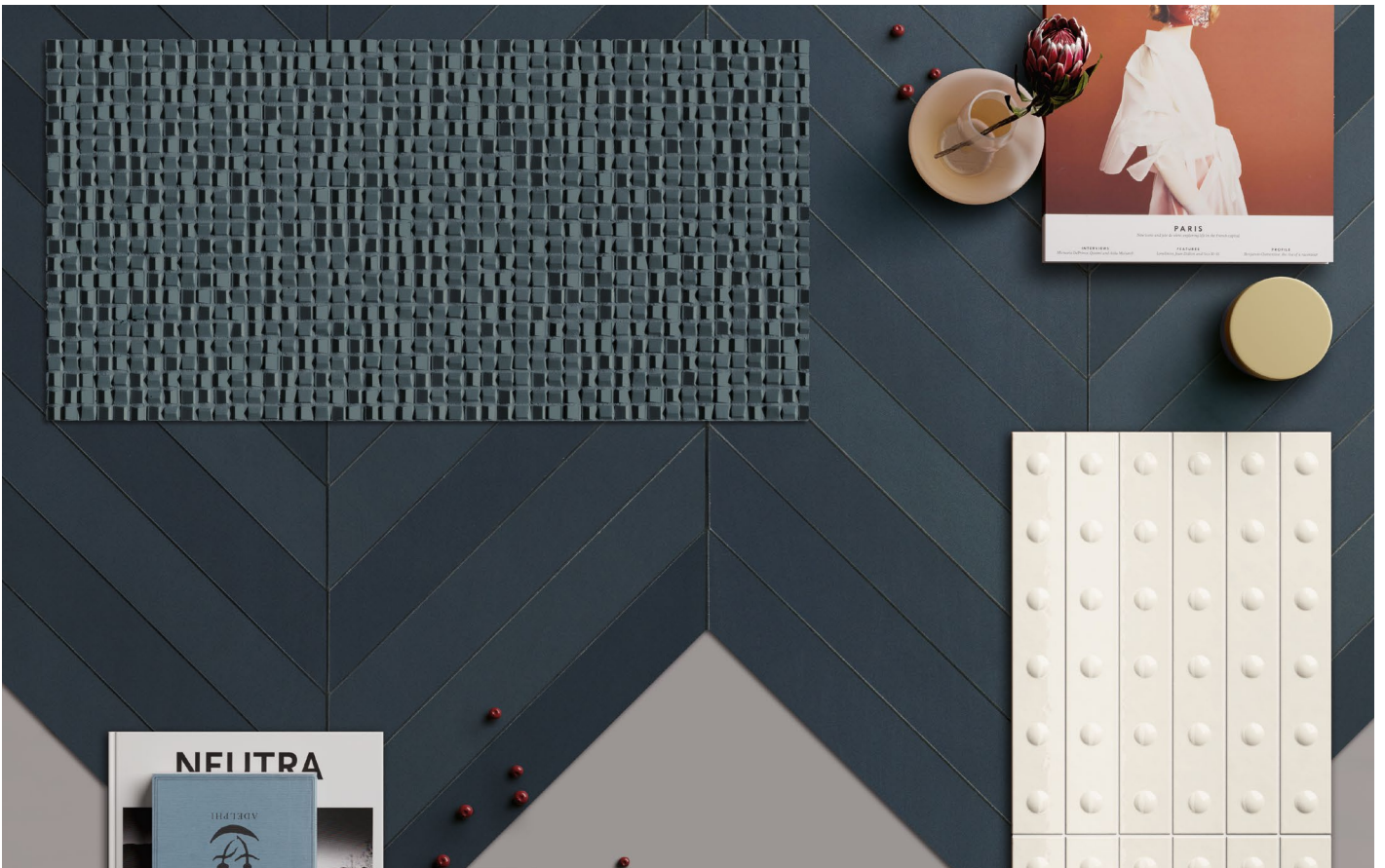


2 Kosei Chevron Grey Green, Phenomenon Rain B Bianco, Punto Down Glossy Blanc



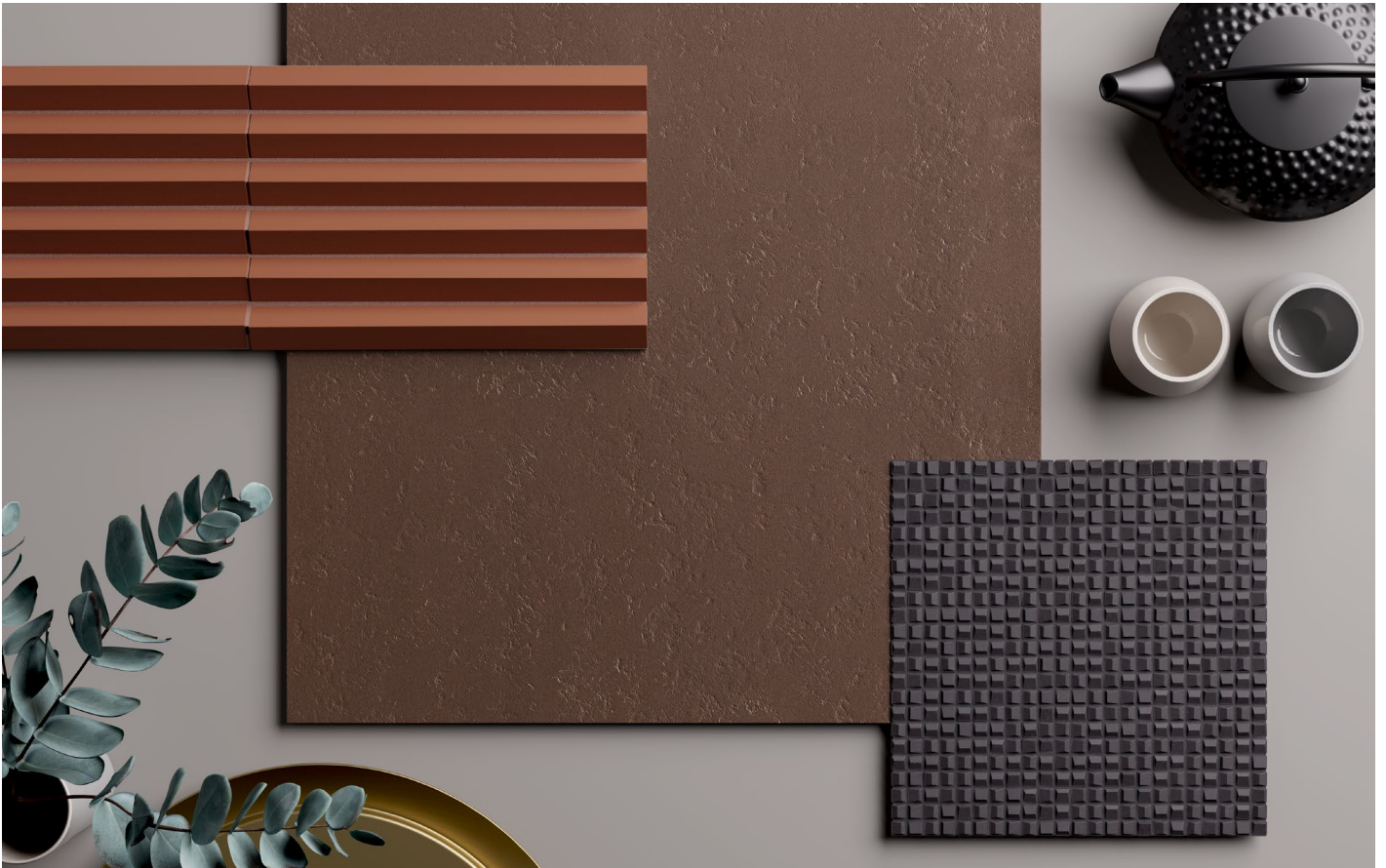
3

Kosei Storm, Phenomenon Rain B Blu, Rombini Triangle Small Glossy White



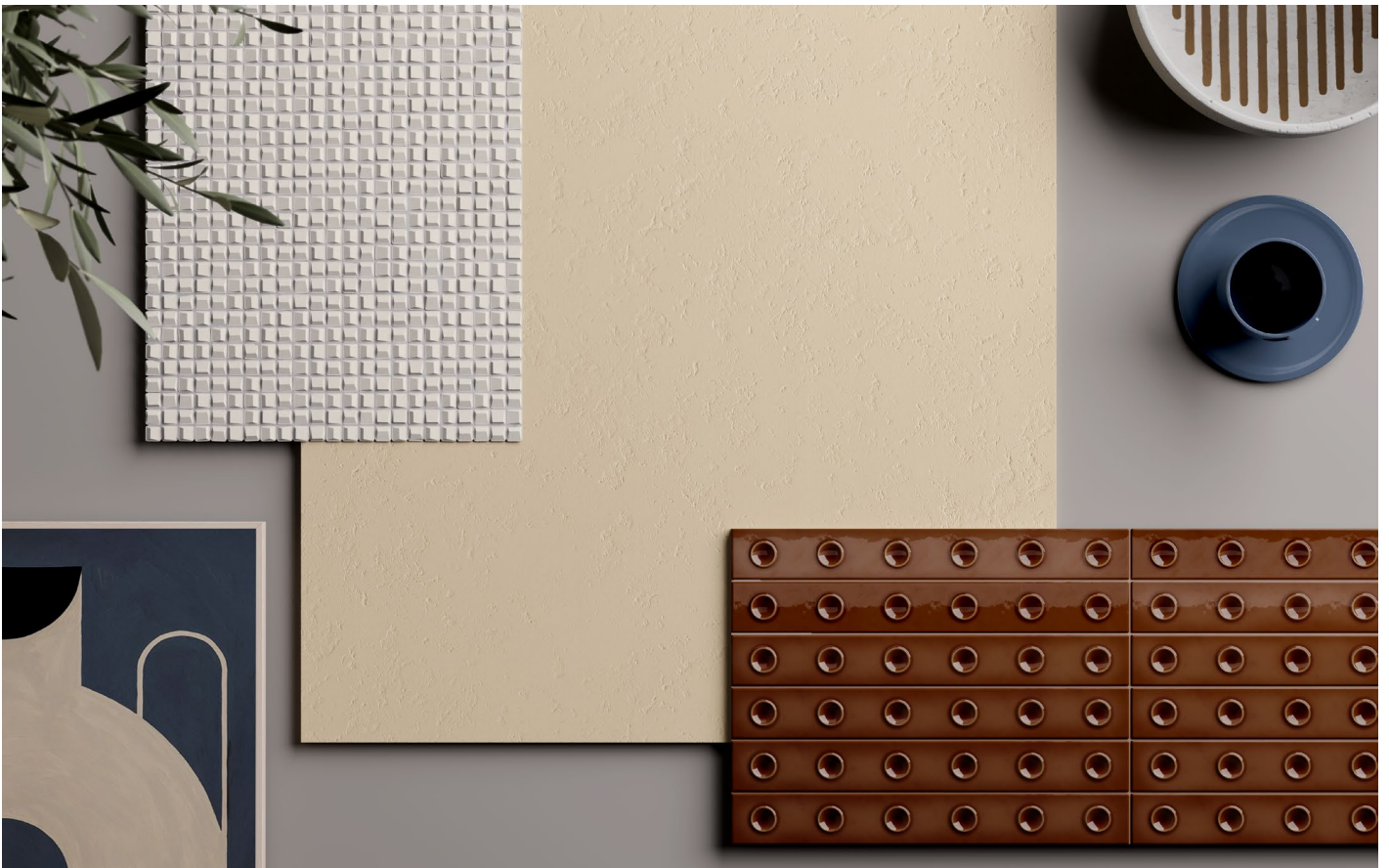
4

Mews Chevron Ink, Phenomenon Air Blu, Punto Up Glossy Blanc



5

Kosei Terra, Phenomenon Air Nero, Rombini Triangle Small Matt Red



6

Kosei Bone, Phenomenon Air Bianco, Punto Down Glossy Red



7

Kosei Chevron Storm, Phenomenon Rain B Nero, Rombini Triangle Small Glossy Red



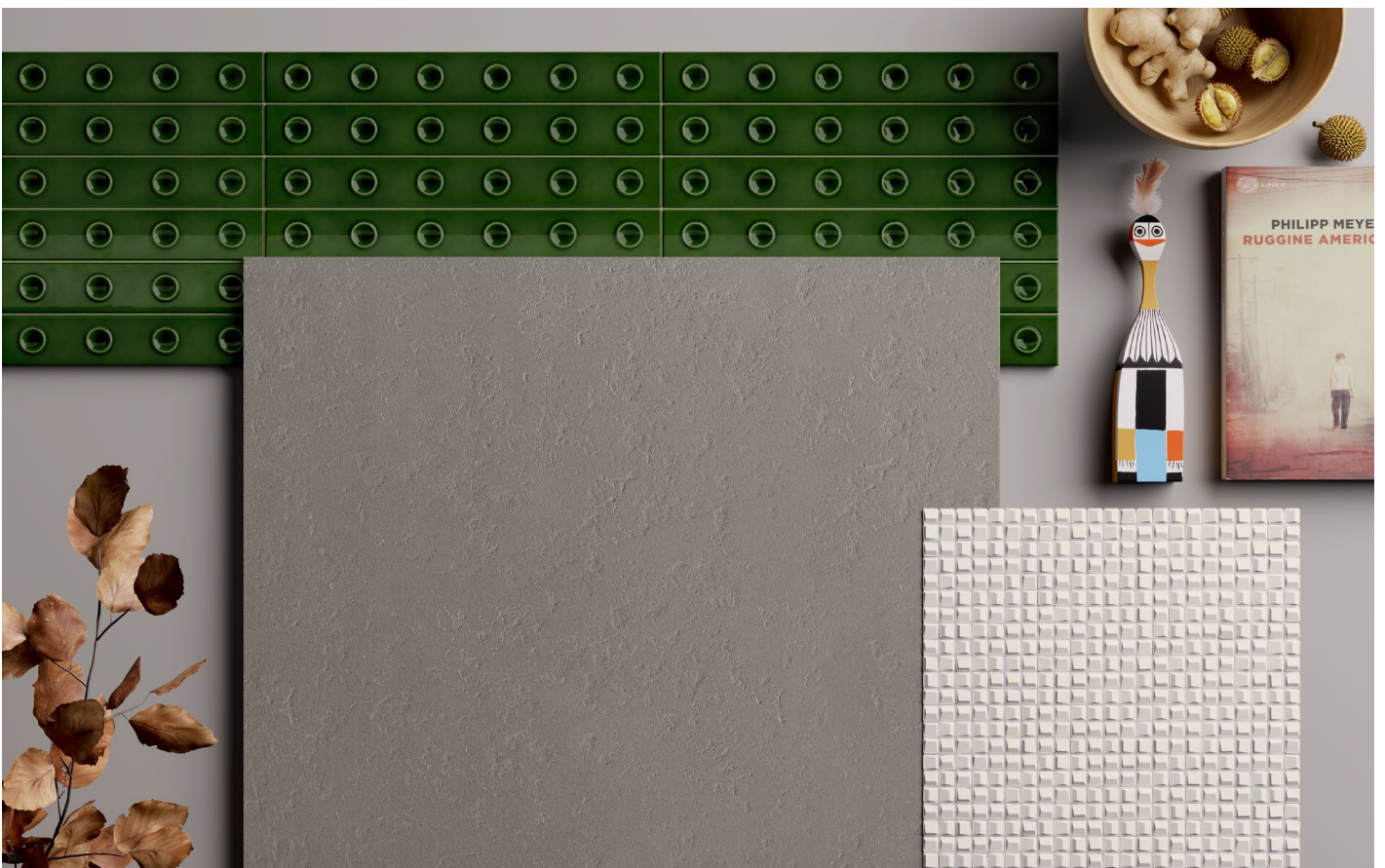
8

Kosei Dark Grey, Phenomenon Rain B Nero, Punto Up Glossy Red



9

Kosei Chevron Dark Grey, Phenomenon Air Nero, Rombini Triangle Small Glossy Vert

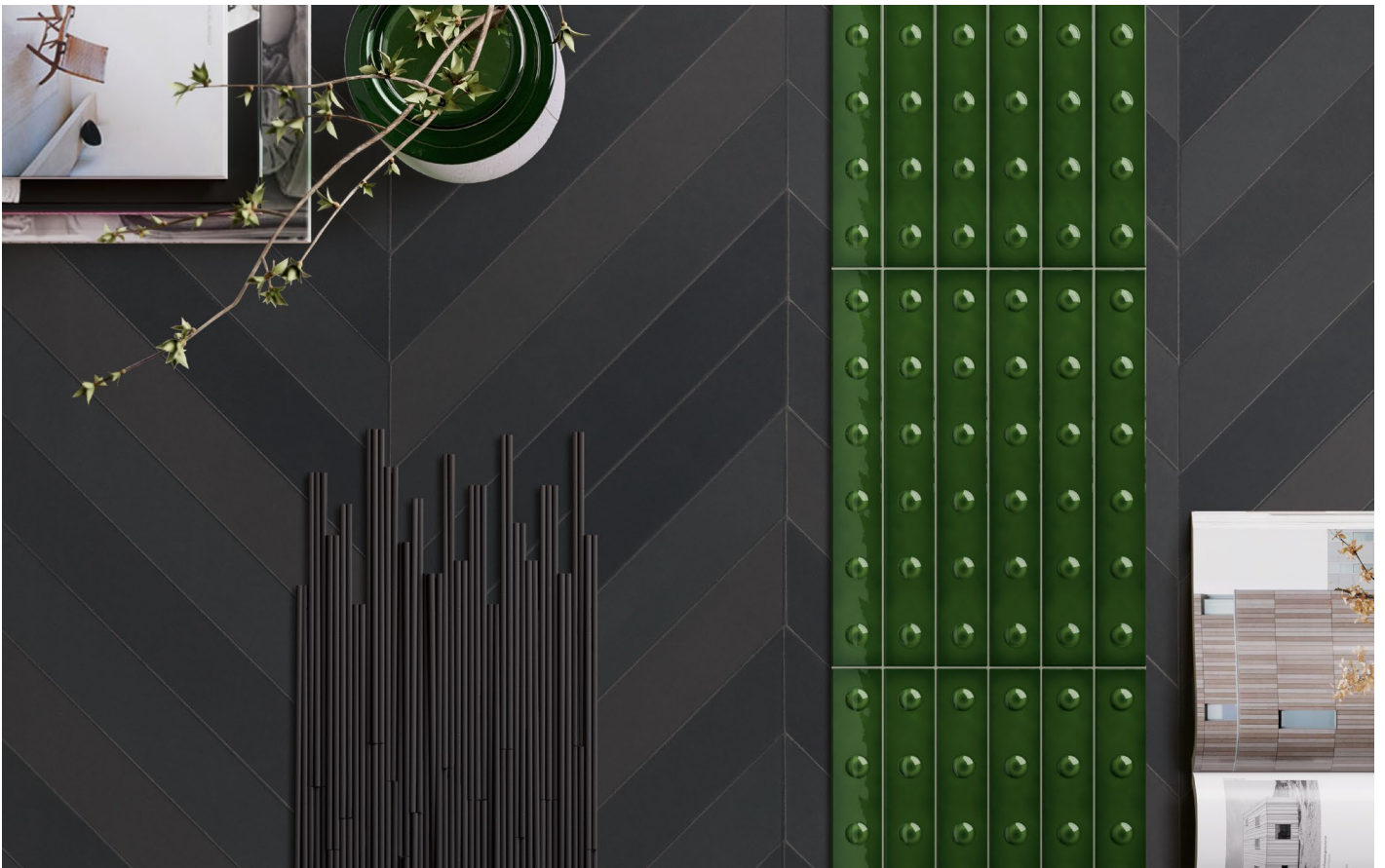


10

Kosei Storm, Phenomenon Air Bianco, Punto Down Glossy Vert



11 Kosei Grey Green, Phenomenon Rain B Bianco, Rombini Triangle Small Matt Green



12 Mews Chevron Soot, Phenomenon Rain B Nero, Punto Up Glossy Vert

Suggestions

With the previous floor and wall combinations, we created some interior suggestions to show how the elements can be used to decorate environments.



**Interior made with
Combination 2**

Kosei Chevron Grey Green + Dark Grey,
Phenomenon Rain B Bianco, Punto Down Glossy Blanc



**Interior made with
Combination 6**

Kosei Bone, Phenomenon Air Bianco, Punto Down Glossy Red



**Interior made with
Combination 9**

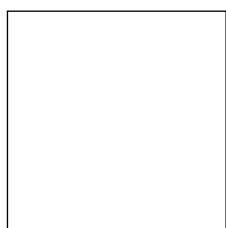
Kosei Chevron Dark Grey, Phenomenon Air Nero,
Rombini Triangle Small Glossy Vert

Mutina

Technical Features

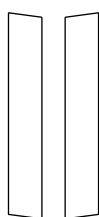
Kosei

collection	Kosei
design	Vincent Van Duysen, 2022
production	Industrial
material	Extruded unglazed porcelain stoneware
thickness	0.39"
nominal sizes	24"·24", chevron: 4"·22"
specification	5 colours: Bone, Storm, Terra, Grey Green, Dark Grey
category	UNI EN 14411 App A (AI group) UGL



24"·24"

SX DX



Chevron
4"·22"

Laying and maintenance tips

use	Floors, walls – indoor, outdoor.
recommended adhesive	Adhesive for porcelain stoneware.
recommended joints	0.08" / 2mm joints
recommended fillers	CEMENT-BASED GROUT / EPOXY GROUT. Remove all traces of grout carefully before it dries completely.
cleaning at the end of installation	CEMENT-BASED GROUT: Buffered acid (e.g. DETERDEK PRO by FILA or similar). Wet the floor with water, dilute the product 1:5 with water and pour it on the floor. Wait for 2-3 minutes then use a white scotch brite pad and rinse well with clean water. EPOXY GROUT: Alkaline detergent (e.g. FILA CR10 by FILA). FILA CR10: apply pure, wait for 30 minutes then use a green scotch brite pad. SILICONE: Solvent for silicone e.g. FILA ZERO SIL. Put it straight onto the stain, wait for 20 minutes and remove the mark using scotch brite. PAINT: Can usually be removed using water, but if resin-based paints or particular enamels have been used, it is best to ask the manufacturer which solvent is most suitable. RUST: stain remover es. FILA NO RUST. Apply the product onto the stain, leave for 15 minutes, remove the residue and rinse thoroughly.
general cleaning (installed tiles)	You are recommended to use ordinary neutral detergent diluted in water. Avoid using acid or alkaline products, waxes and/or impregnants. During ordinary cleaning it is recommended to use extremely abrasive items (such as scourers and iron or steel sponges) as little as possible. This recommendation must be adhered to rigorously in the case of tiles with a glossy surface finishing as they are more susceptible to the risk of scuffs, scratches and loss of shine, etc. In the event of heavy dirt or particularly textured surfaces, use an alkaline detergent and rinse after washing. For large surfaces, the use of a floor washing machine is recommended. During every-day cleaning procedures, it is necessary to remember that certain types of dirt (dust, sand) increase the abrasive effect of foot-traffic. Therefore we recommend that you avoid bringing in this type of dirt, which comes in from the outside, by placing a door-mat at the entrance.

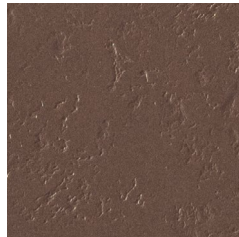
Colors



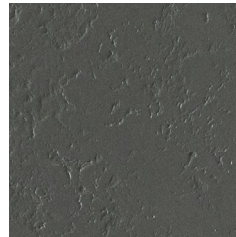
Bone



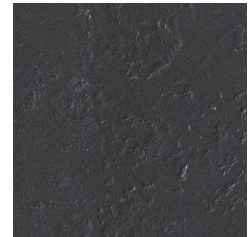
Storm



Terra



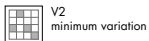
Grey Green



Dark Grey

Technical features

STANDARD	FEATURES	VALUE REQUIRED	KOSEI
ISO 10545/2	SIZES length and width thickness straightness of edges wedging flatness	$\pm 1\%$ $\pm 10\%$ $\pm 0,5\%$ $\pm 1\%$ $\pm 0,5\%/0,8\%$	in conformity with standard
ISO 10545/3	water absorption	< 0,5%	0,06%
ISO 10545/4	breaking strength modulus of rupture	≥ 1300 N ≥ 32 N/mm ²	in conformity with standard
ISO 10545/9	resistance to thermal shock	comply requirements	resistant
ISO 10545/12	frost resistance	comply requirements	resistant
ISO 10545/13	Resistance to acids and alkalis (low and high concentration) Resistance to household cleaning agents and swimming pool chemicals	declared value minimum class B	A A
ISO 10545/14	stains resistance	minimum 3	5
DIN 51130			R10
DIN 51097			B
DCOF		> 0.42	0.84
Pendulum BS (EN 16165-c)			55 dry 45 wet
Pendulum AS/NZS (4586313 app A)			44 P3
Pendulum ES (UNE 41901)			45 C2
ISO 14001			
VOC Emission Declaration of Contents EPD SVHC declaration			available upon request



Mews

collection	Mews
design	Edward Barber & Jay Osgerby, 2013, 2023
production	Industrial
material	Glazed homogeneous porcelain stoneware
features	Cut pieces each one exactly the same as the others
thickness	0.35"
nominal sizes	chevron 2".16"
specification	- 2 Colours - Each colour composed by a random mix of 15 shades to obtain a softly shaded surface
awards	Wallpaper Design Award 2014, Edida 2014
patents	Registered design n° 002336909-0005/0012 – date of registration: 31/10/2013
category	UNI EN 14411 App G (BIA group)



2".16" chevron

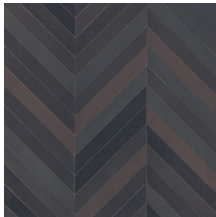
Laying and maintenance tips

use	Floor, wall – indoor, outdoor.
installation	The material is deliberately shaded. Take the material from several boxes and mix carefully. During installation, frequently use tools such as a set square, straight edge and spirit level to check the tiles are being laid correctly.
recommended adhesive	Adhesive for porcelain stoneware.
recommended joints	2mm joints. Use wedges to fix the caliber differences in work size between tiles.
recommended fillers	Cement-based grout / epoxy grout.
cleaning at the end of installation	CEMENT-BASED GROUT: Buffered acid (e.g. DETERDEK PRO by FILA, or similar). Wet the floor with water, saturating the joints, dilute the product 1:5 with water and pour it on the floor. Wait for 2 or 3 minutes then use a white scotch Brite pad and rinse well with clean water. EPOXY GROUT: Alkaline detergent (e.g. FILA CR10 by FILA). FILA CR10: apply pure, wait for 30 minutes then use a green scotch Brite pad. SILICONE: Solvent for silicone (e.g. FILA ZERO SIL.). Pour it straight onto the stain, wait for 20 minutes and remove the mark using scotch Brite. PAINT: Can usually be removed using water, but if resin-based paints or particular enamels have been used, it is best to ask the manufacturer which solvent is most suitable. RUST: stain remover es. FILA NO RUST. Apply the product onto the stain, leave for 15 minutes, remove the residue and rinse thoroughly.
general cleaning (installed tiles)	You are recommended to use ordinary neutral detergent diluted in water. Avoid using acid or alkaline products, waxes and/or impregnants. During ordinary cleaning it is recommended to use extremely abrasive items (such as scourers and iron or steel sponges) as little as possible. This recommendation must be adhered to rigorously in the case of tiles with a glossy surface finishing as they are more susceptible to the risk of scuffs, scratches and loss of shine, etc. In the event of heavy dirt or particularly textured surfaces, use an alkaline detergent and rinse after washing. For large surfaces, the use of a floor washing machine is recommended. During every-day cleaning procedures, it is necessary to remember that certain types of dirt (dust, sand) increase the abrasive effect of foot-traffic. Therefore we recommend that you avoid bringing in this type of dirt, which comes in from the outside, by placing a door-mat at the entrance.
calibers (real size)	2" x 16" (chevron) - 2" x 15,50"

Colors



Ink



Soot

Technical features

STANDARD	FEATURES	VALUE REQUIRED	MEWS
ISO 10545/3	water absorption	< 0,5%	0,04%
ASTM C373		< 0,5%	0,04%
ISO 10545/4	breaking strength	Sp> 7,5 min 1300	resistant
ISO 10545/9	resistance to thermal shock	no visible alteration	resistant
ASTM C484		no samples must show visible defects	unaffected
ISO 10545/12	frost resistance	no visible alteration	resistant
ASTM C1026		unaffected	unaffected
ISO 10545/13	resistance to chemical attacks	no visible alteration	resistant
ASTM C650			unaffected
ISO 10545/14	stains resistance	class 3	class 5
DIN 51130 - 04	slip resistance	medium values 6±10° R9 10±19° R10 19±27° R11 27±35° R12 > 35° R13	R10
DIN 51097		-	-
DCOF		> 0,42	0,80
Pendulum BS7976-2		-	55 dry / 46 wet
LEED CERTIFICATION 4.1		-	13,8% - 15,3%
Robinson Test			heavy use
ISO 9001 - ISO 14001			
VOC Emission			available upon request
Declaration of Contents			available upon request
SDS			available upon request
EPD			available upon request
BPD3			available upon request
HPD			available upon request

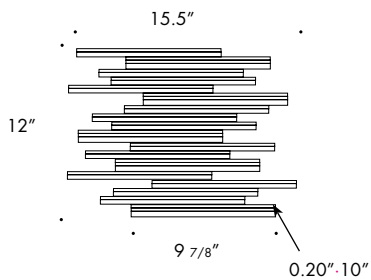


Phenomenon

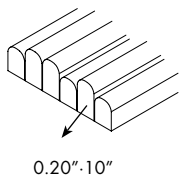
Phenomenon Rain B, Phenomenon Air

collection	Phenomenon
design	Tokuji Yoshioka, 2010 – 2013 – 2022
production	Artisanal
material	Homogeneous unglazed porcelain stoneware straws, obtained by pressing and fixed on net
thickness	RAIN B: min 0.20" – max 0.27" AIR: 0.31"
nominal sizes	RAIN B: net 9 7/8" · 12" AIR: net 12" · 12"
specification	<ul style="list-style-type: none"> – 3 colours: Bianco, Nero, Blu – The mosaic is assembled in sheets to give a "handmade look" to the surface and it represents the finest of modern-day Italian craftsmanship. – Each mosaic card is individually pressed with a bespoke 100-holes mould, expressly created to achieve a materic and artisanal feeling, then fired through a bespoke, patented, process. – Mutina patented production process and machines (Industrial Patent filed on 02/09/2010 under number MO2010A000247) – The cards are manually assembled accurately by expert hands to build a unique, innovative pattern.
awards	ICFF Editors Award Material 2011, Wallpaper Design Award 2011, Edida 2011, Selected for Adi Design Index 2011, Love Tag Azure Magazine 2012, Red Dot Design Award 2012, Interior Innovation Award 2014, Best of Best 2014
patents	Registered design n° 001912999-0011 – date of registration: 06/09/2011
category	UNI EN 14411 App G (BIA group) UGL

RAIN B

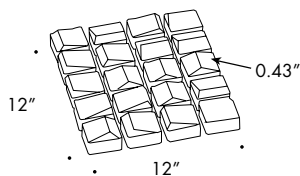
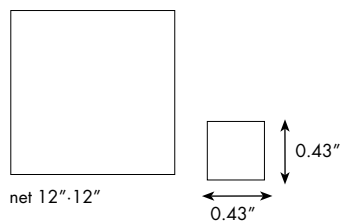


section



net 9 7/8" · 12"

AIR



Laying and maintenance tips

use	(RAIN B, AIR) Wall – indoor, outdoor.
installation	Lay on perfectly flat, dry walls.
recommended adhesive	NON-RAPID-DRYING adhesive for porcelain stoneware to make it easier to fix the sheets.
recommended joints	0.08" / 2mm joints.
recommended fillers	CEMENT-BASED GROUT: (all mosaics). Grout 0.5 m ² at a time and wash thoroughly with clean water. Remove all traces of grout carefully before it dries completely. EPOXY GROUT: (rock, honey A only). Grout 0.5 m ² at a time and wash thoroughly with clean water. Remove all traces of grout carefully before it dries completely.
cleaning at the end of installation	CEMENT-BASED GROUT: Buffered acid (e.g. DETERDEK PRO by FILA, or similar). Wet the floor with water, dilute the product 1:5 with water and pour it on the floor. Wait for 2 or 3 minutes then use a white scotch brite pad and rinse well with clean water. EPOXY GROUT: Alkaline detergent (e.g. FILA CR10 by FILA). FILA CR10: apply pure, wait for 30 minutes then use a green scotch brite pad. SILICONE: Solvent for silicone (e.g. FILA ZERO SIL.). Pour it straight onto the stain, wait for 20 minutes and remove the mark using scotch brite. PAINT: Can usually be removed using water, but if resin-based paints or particular enamels have been used, it is best to ask the manufacturer which solvent is most suitable. RUST: stain remover es. FILA NO RUST. Apply the product onto the stain, leave for 15 minutes, remove the residue and rinse thoroughly.
general cleaning (installed tiles)	You are recommended to use ordinary neutral detergent diluted in water. Avoid using acid or alkaline products, waxes and/or impregnants. During ordinary cleaning it is recommended to use extremely abrasive items (such as scourers and iron or steel sponges) as little as possible. This recommendation must be adhered to rigorously in the case of tiles with a glossy surface finishing as they are more susceptible to the risk of scuffs, scratches and loss of shine, etc. In the event of heavy dirt or particularly textured surfaces, use an alkaline detergent and rinse after washing.
calibers (real size)	–

Colors

RAIN B



Rain B Bianco



Rain B Nero

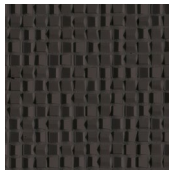


Rain B Blu

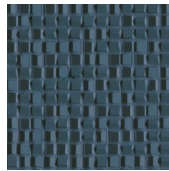
AIR



Air Bianco



Air Nero



Air Blu

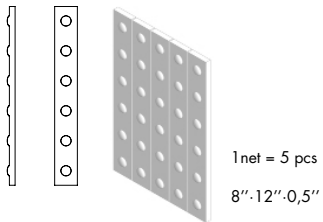
Technical features

STANDARD	FEATURES	VALUE REQUIRED	PHENOMENON
ISO 10545/3	water absorption	< 0,5%	0,1%
ISO 10545/9	resistance to thermal shock	no visible alteration	resistant
ISO 10545/12	frost resistance	no visible alteration	resistant
ISO 10545/13	resistance to chemical attacks	minimum B	A B glossy finishing
ISO 10545/14	stains resistance	minimum 3	5
VOC Emission			available upon request
Declaration of Contents			available upon request
EPD			available upon request
SDS			available upon request
BPD3			available upon request
HPD			available upon request

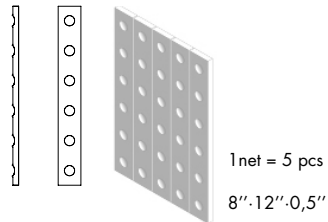
Punto

collection	Punto
design	Ronan & Erwan Bouroullec, 2021
production	Industrial
material	Glazed pressed body
thickness	Punto Down: 0,5" Punto Up: 0,5"
sizes	Punto Down: 5 pcs 12" · 1,6" · 0,5" on net: 8" · 12" Punto Up: 5 pcs 12" · 1,6" · 0,5" on net: 8" · 12"
specification	- 2 shapes: up and down - 1 glossy colors: blanc - 2 glossy colors with craquelé glaze: vert and brun
use	Wall – indoor
awards	Best of Year 2022
category	BIII UNI EN 14411 GL
patents	Registered design n° 009069826 – 001/0008 – date of registration: 27/06/2022

PUNTO UP



PUNTO DOWN



Laying and maintenance tips

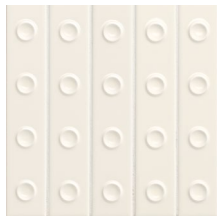
use	Wall – indoor
installation	Lay on perfectly flat, dry walls.
recommended adhesive	NON RAPID DRYING adhesive for porcelain stoneware to make it easier to fix the sheets.
recommended joints	Place the sheets with the same joint as within the sheet.
recommended fillers	FINE-GRAIN CEMENT BASE GROUT: Grout 0.5 m ² at a time and wash thoroughly with clean water. Remove all traces of grout carefully before it dries completely. EPOXY GROUT: Grout 0.5 m ² at a time and wash thoroughly with clean water. Remove all traces of grout carefully before it dries completely. Do not use for Punto Vert and Punto Brun.
cleaning at the end of installation	<p>– Punto Vert and Punto Brun: do not use abrasive cleaners / do not use acid or alkaline products. / Craquelé is a type of glazed ceramics characterised by micro-cracks on the surface, deliberately created as a distinctive finish. This particular process makes the material sensitive to acids. For ordinary maintenance, anti-limescale products should be avoided, because they can dull the surface.</p> <p>Please proceed as follows:</p> <ol style="list-style-type: none"> 1. Treatment pre-grouting with FILA MP90, solvent based stain protector. 2. Grouting with cement-based grout, possibly do not grout in contrast 3. Cleaning at the end of installation with cleaner FILA CLEANER PRO, neutral detergent, dilute the product in a ratio 1:30 4. Final cleaning with FILA MP90 <p>– Punto Matt and Glossy: do not use abrasive cleaners, especially for glossy finishing.</p> <p>FINE-GRAIN CEMENT BASE GROUT: Buffered acid (e.g. Deterdek by FILA, Deltaplus by KERAKOLL, or similar). Wet the floor with water, dilute the product 1:5 with water and pour it on the floor. Wait for 5 minutes then use a white scotch brite pad and rinse well with clean water. EPOXY GROUT: Alkaline detergent (e.g. Fugasap by KERAKOLL, PS/87 by FILA). Wet the floor with water, dilute the product 1:5 with water and pour it on the floor. Wait for 5 minutes then use a white scotch brite pad and rinse well with clean water. SILICONE: Solvent for silicone (e.g. Remosil). Pour it straight onto the stain, wait for 1-2 minutes and remove the mark using scotch brite. PAINT: Can usually be removed using water, but if resin-based paints or particular enamels have been used, it is best to ask the manufacturer which solvent is most suitable.</p>
general cleaning (installed tiles)	Punto Vert and Punto Brun: do not use abrasive cleaners / do not use acid or alkaline products. For ordinary maintenance, anti-limescale products should be avoided, because they can dull the surface. Punto Matt and Glossy do not use abrasive cleaners, especially for glossy finishing.
calibers (real size)	–

Colors

GLOSSY



Up Blanc



Down Blanc



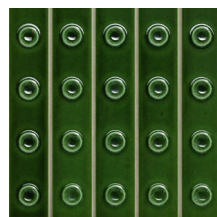
Up Brun



Down Brun



Up Vert



Down Vert

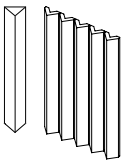
Technical features

STANDARD	FEATURES	VALUE REQUIRED	PUNTO
ISO 10545/3	water absorption	x >10%	17,0%
ISO 10545/4	breaking strength	Sp > 7,5 min 600	in conformity
ISO 10545/9	resistance to thermal shock	no visible alteration	unaffected
ISO 10545/11	crazing resistance	no visible alteration	unaffected
ISO 10545/13	resistance to chemical attacks	min B	A – B
ISO 10545/14	stains resistance	class 3	class 5
LEED CERTIFICATION 4.1			64% recycled material
VOC Emission			available upon request
Declaration of Contents			available upon request
SDS			available upon request
BPD3			available upon request
HPD			available upon request

Rombini

collection	Rombini
design	Ronan & Erwan Bouroullec, 2015, 2021
production	Industrial
material	Glazed pressed body
thickness	1"
nominal sizes	5 pcs 12".1".1", on net 7".12"
specification	With Triangle, the shape of the rhombus is interpreted in its three-dimensional shape, in order to create games of lights and shadow on the surface: the elements seem to arise from the floor and to carry on the wall covering. Triangle is obtain by press in special 3D mold, then glazed and assembled on net. This allow to use Triangle also on concave or convex curved surfaces.
use	Wall – indoor
complementary pieces	Terminal Extra Small, Small and Large in all colors and finishing. Listello in all colors and finishing.
awards	Archiproducts Design Award 2016
patents	Registered design n° 002889055-0019/0024 – date of registration: 03/12/2015
category	Triangle BIII UNI EN 14411 GL

TRANGLE SMALL



5 pcs 12".1".1"
on net 7".12"

Laying and maintenance tips

use	Wall – indoor.
installation	Lay on perfectly flat, dry walls.
recommended adhesive	NON-RAPID-DRYING adhesive for porcelain stoneware to make it easier to fix the sheets.
recommended joints	Place the sheets with the same joint as within the sheet.
recommended fillers	FINE-GRAIN CEMENT BASE GROUT: Grout 0.5 m ² at a time and wash thoroughly with clean water. Remove all traces of grout carefully before it dries completely. EPOXY GROUT: Grout 0.5 m ² at a time and wash thoroughly with clean water. Remove all traces of grout carefully before it dries completely. Do not use for Triangle Vert and Triangle Brun.
cleaning at the end of installation	– Triangle Vert and Triangle Brun: do not use abrasive cleaners / do not use acid or alkaline products. / Craquelé is a type of glazed ceramics characterised by micro-cracks on the surface, deliberately created as a distinctive finish. This particular process makes the material sensitive to acids. For ordinary maintenance, anti-limescale products should be avoided, because they can dull the surface. Please proceed as follows: 1. Treatment pre-grouting with FILA MP90, solvent based stain protector. 2. Grouting with cement-based grout, possibly do not grout in contrast 3. Cleaning at the end of installation with cleaner FILA CLEANER PRO, neutral detergent, dilute the product in a ratio 1:30 4. Final cleaning with FILA MP90 – Triangle Matt and Glossy: do not use abrasive cleaners, especially for glossy finishing. FINE-GRAIN CEMENT BASE GROUT: Buffered acid (e.g. Deterdek by FILA, Deltaplus by KERAKOLL, or similar). Wet the floor with water, dilute the product 1:5 with water and pour it on the floor. Wait for 5 minutes then use a white scotch brite pad and rinse well with clean water. EPOXY GROUT: Alkaline detergent (e.g. Fugasoap by KERAKOLL, PS/87 by FILA). Wet the floor with water, dilute the product 1:5 with water and pour it on the floor. Wait for 5 minutes then use a white scotch brite pad and rinse well with clean water. SILICONE: Solvent for silicone (e.g. Remosil). Pour it straight onto the stain, wait for 1-2 minutes and remove the mark using scotch brite. PAINT: Can usually be removed using water, but if resin-based paints or particular enamels have been used, it is best to ask the manufacturer which solvent is most suitable.
general cleaning (installed tiles)	Triangle Vert and Triangle Brun: do not use abrasive cleaners / do not use acid or alkaline products For ordinary maintenance, anti-limescale products should be avoided, because they can dull the surface. Triangle Matt and Glossy: do not use abrasive cleaners, especially for glossy finishing
calibers (real size)	–

Colors

TRIANGLE SMALL – GLOSSY



Blanc



Brun

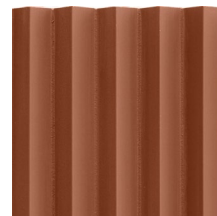


Vert

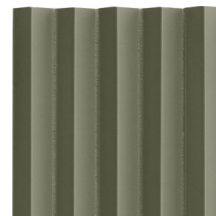
TRIANGLE SMALL – MATT



White



Red



Green

Technical features

STANDARD	FEATURES	VALUE REQUIRED	ROMBINI TRIANGLE
ISO 10545/3	water absorption	x >10%	17,0%
ISO 10545/9	thermal shock resistance	no alteration	no alteration
ISO 10545/11	crazing resistance	no alteration	no alteration
ISO 10545/13	acids and alkalis resistance	min B	A – B
ISO 10545/14	stains resistance	class 3	class 5
LEED 4.1		–	64% recycled material
VOC Emission			
Declaration of Contents			
SDS			
BPD3			
HPD			

Merchandising

Display A01

Boards A01

Display A01

dimensions display A01	overall space needed for full display A0: 55,7" · h 82,7" · 17,7" dimensions 6 wall boards: 51,2" · h 38,5" dimensions chest (inclusive of boards): 39,4" · h 41,3" · 17,7"
crate dimensions	31,5" · 47,25" · h 39,4"
total weight (crate included)	375 lbs
description	wall display consisting of 6 wall boards, cleated on the back, and a chest containing 25 boards A01 one each stock item



Boards A01

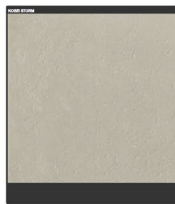
dimensions

12" · 13,8"

KOSEI



Bone



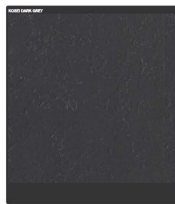
Storm



Terra

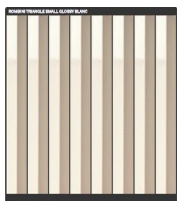


Grey Green

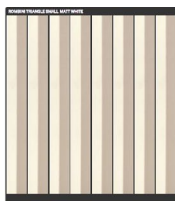


Dark Grey

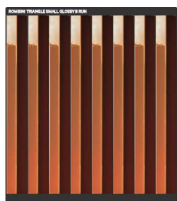
ROMBINI TRIANGLE SMALL



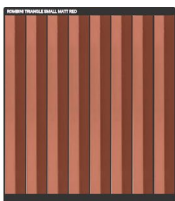
Glossy Blanc



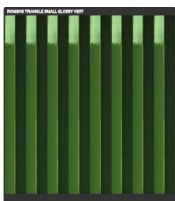
Matt White



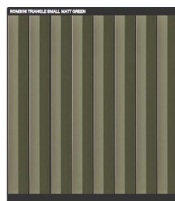
Glossy Brun



Matt Red

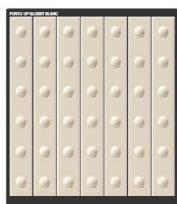


Glossy Vert

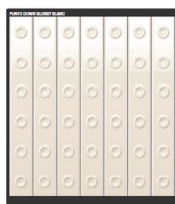


Matt Green

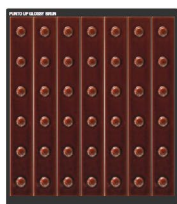
PUNTO GLOSSY



Up Blanc



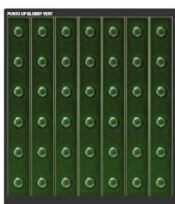
Down Blanc



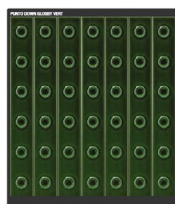
Up Brun



Down Brun



Up Vert



Down Vert

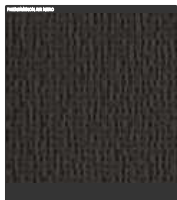
PHENOMENON



Air Bianco



Rain B Bianco



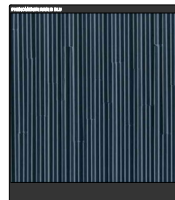
Air Nero



Rain B Nero



Air Blu



Rain B Blu

MEWS



Chevron Soot



Chevron Ink

Boards back Graphics

KOSEI

MUTINA **KOSEI**
BY VINCENT VAN DUYSSEN

design Vincent Van Duysen, 2012
materiali alluminio anodizzato
sistema di fissaggio invisibile
spessore 12 mm

dimensioni
1200x1200 mm
1200x600 mm

Colors



ROMBINI

MUTINA **ROMBINI**
BY RONAN & ERWAN BOURULLEC

design Ronan & Erwan Bouroullec, 2011 - 2013
materiali alluminio anodizzato
sistema di fissaggio invisibile
spessore 12 mm

dimensioni
1200x1200 mm
1200x600 mm

Triangle Small Colors & Finishes



PUNTO

MUTINA **PUNTO**
BY RONAN & ERWAN BOURULLEC

design Ronan & Erwan Bouroullec, 2011
materiali alluminio anodizzato
sistema di fissaggio invisibile
spessore 12 mm

dimensioni
1200x1200 mm
1200x600 mm

Colors & Finishes



MEWS

MUTINA **MEWS**
BY EDWARD BARBER & JAY OSGERBY

design Edward Barber & Jay Osgerby, 2013, 2012
materiali alluminio
sistema di fissaggio invisibile
spessore 12 mm

dimensioni
1200x1200 mm
1200x600 mm

Colors



PHENOMENON

MUTINA **PHENOMENON**
BY TOKUJIN YOSHIOKA

design Tokujin Yoshioka, 2011 - 2013 - 2012
materiali alluminio
sistema di fissaggio invisibile
spessore 12 mm

dimensioni
1200x1200 mm
1200x600 mm

Colors



CREDITS

Text: Mutina

Photography: Studio Bouroullec,
Cristiano Casolari, DSL Studio, Officine Mimesi,
Gerhardt Kellermann, Claudia Zalla.

Images: Officine Mimesi

All the rights are reserved.

Not any part of this work can be reproduced in any way
without the preventive written authorization by Mutina.

All work is copyrighted © to their respective owners.

To discover more about Mutina
collections visit mutina.it

Ceramiche Mutina Spa
Via del Crociale 25
41042 Fiorano Modenese, Italia
T +39 0536812800
F +39 0536812808
info@mutina.it
www.mutina.it

© Mutina 2024

Mutina

