

# HYPER™

Long live beauty

<b>Hyper™</b>	<b>02</b>
<b>Oxyd</b>	<b>04</b>
Oxyd technical info	32
<b>Replay</b>	<b>42</b>
Replay technical info	70

**Una raccolta di progetti che esalta l'estetica dei materiali con le più alte prestazioni del gres porcellanato a tutto spessore, resistente e inalterabile nel tempo.**

**Ogni prodotto è ottenuto attraverso la miscelazione di materie prime che creano superfici uniche e irripetibili, nella loro componente tecnica e stilistica, progettate per dare spazio alle emozioni più intense.**

---

This collection of projects enhances material aesthetics with the ultra-high performance of full-body porcelain stoneware that is resistant and immune to change.

Every product is achieved by mixing raw materials to create surfaces that evoke high-intensity emotions thanks to their unique and unrepeatable technical components and style.

**High performance,  
high fidelity**

**Tecnologia innovativa, ispirazioni stilistiche contemporanee e un'ampia gamma di formati ideali per la progettazione di ambienti e superfici – residenziali, esterni, progetti commerciali - che richiedono la massima stabilità e durevolezza.**

**Hyper™ è garanzia di affidabilità e bellezza oltre il tempo e lo spazio fisico.**

---

Innovative technology, contemporary style inspiration and a wide range of formats, ideal for designing residential, outdoor and retail environments and surfaces requiring maximum stability and durability.

Hyper™ is a guarantee of reliability and beauty that goes beyond time and physical space.

**Long live  
beauty**

**Il progetto Oxyd interpreta tutto il fascino del metallo ossidato – visivo, tattile, cromatico – tipico degli spazi urbani e dei siti industriali dismessi e lo trasforma in soluzioni di stile dal carisma contemporaneo.**

**Una materia duttile e viva composta da due fondi a rilievo: uno più neutro e leggero e uno più strutturato che riproduce sulla superficie una texture di forme geometriche per una più incisiva caratterizzazione decorativa degli ambienti.**

---

The Oxyd project takes all the visual, tactile and chromatic fascination of oxidised metal, typically found in urban spaces and disused industrial sites, and transforms it into stylish solutions with a contemporary charisma.

This ductile, live material offers two textured backgrounds. The first is lighter and more neutral while the other is more structured and features a pattern of geometric shapes that will give environments a highly distinctive character.

# **The ecstasy of metal**



**OXYD**

The ecstasy of metal



\*QUALITY OF MATERIALS



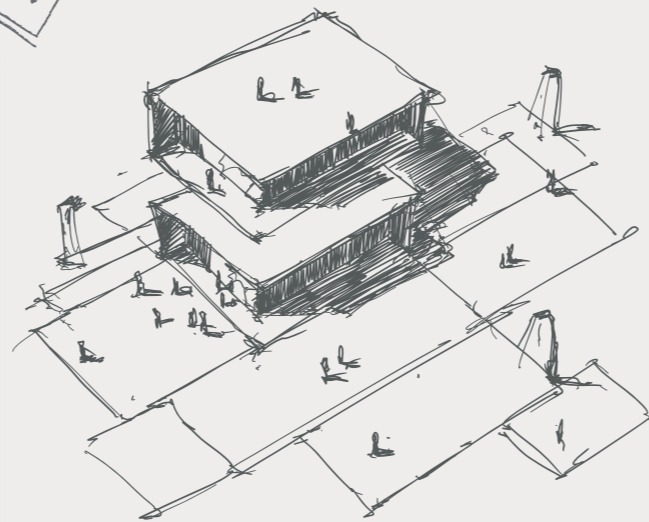
**OXYD**

CONTEMPORARY VIBE

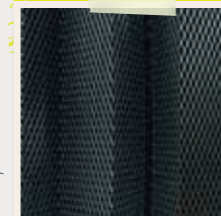
PREVIEW



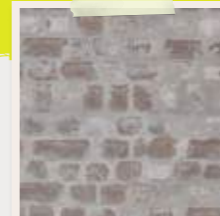
STYLE SOLUTIONS



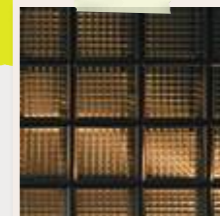
# ECSTASY OF METAL



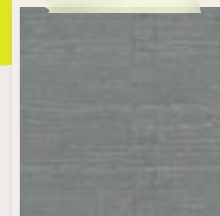
STEEL



BRICKS



GLASS



CONCRETE

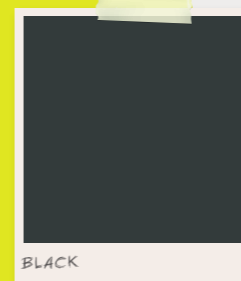


**Oxyd è disponibile in 4 colori – bianco, alluminio, nero, corten – e in 3 formati con spessore 10.5 mm.**

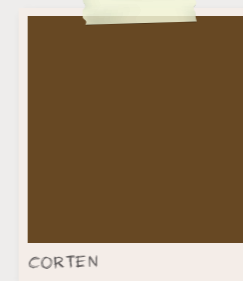
**Una collezione ideale per progetti residenziali e commerciali che vogliono coniugare l'energia materica e il touch industriale del metallo con le performance di resistenza e stabilità del gres porcellanato a tutto spessore.**

Oxyd is available in 4 colours – white, aluminium, black and corten – and in 3 formats with a thickness of 10.5 mm.

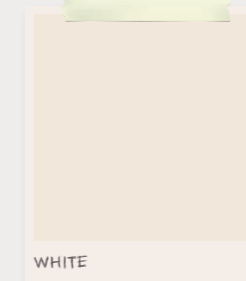
It is an ideal collection for residential and commercial projects that seek to combine the material energy and industrial touch of metal with the stability and durable performance of full-body porcelain stoneware.



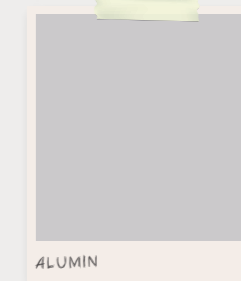
BLACK



CORTEN



WHITE



ALUMIN



120X120 CM



60X120 CM



60X60 CM



OXYD 120G RM







OXYD 120W RM . OXYD 12W RM





OXYDQ 120N RM . OXYD 120N RM . OXYD 12N RM





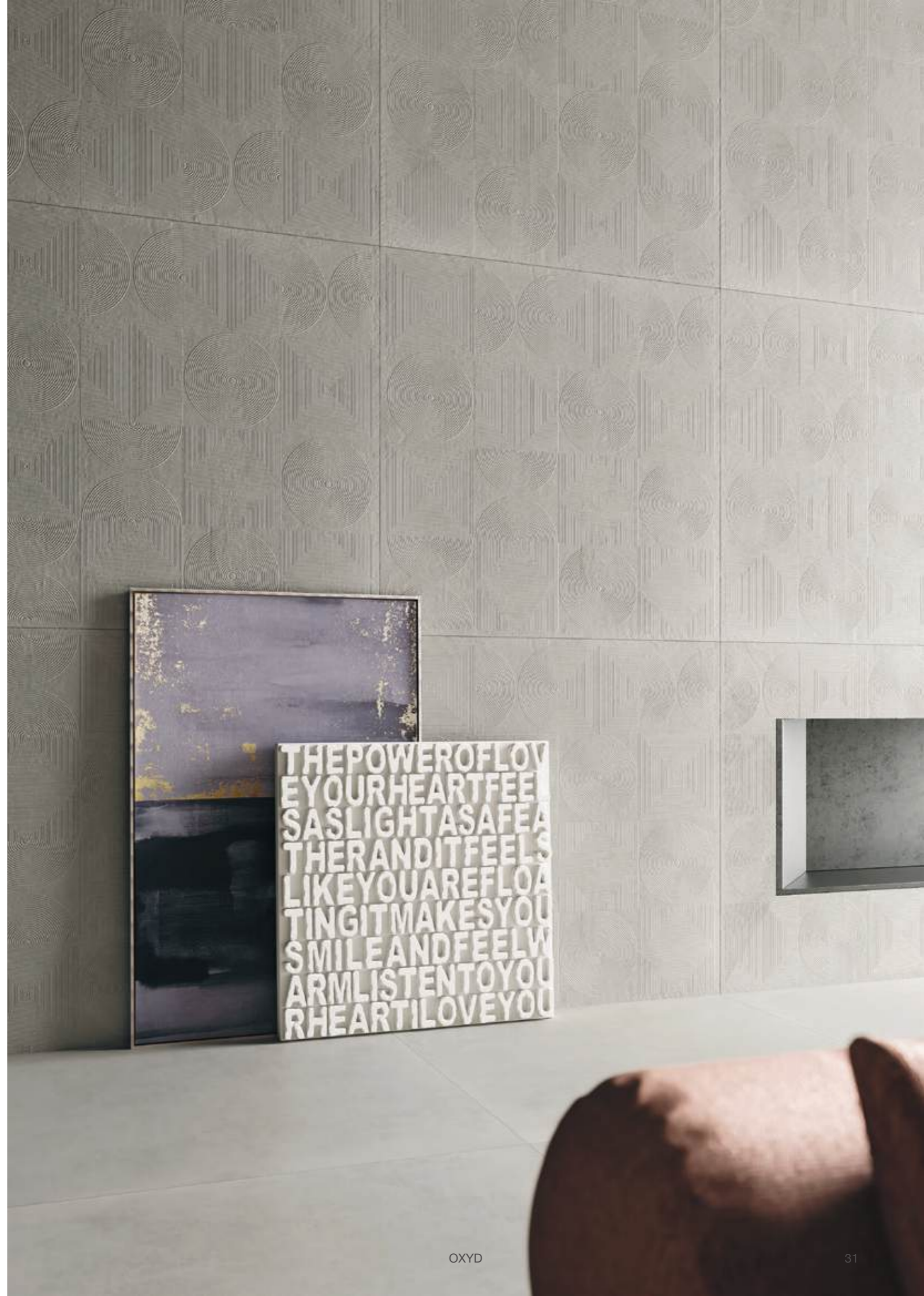






OXYD 120G RM . OXYDQ 120G RM

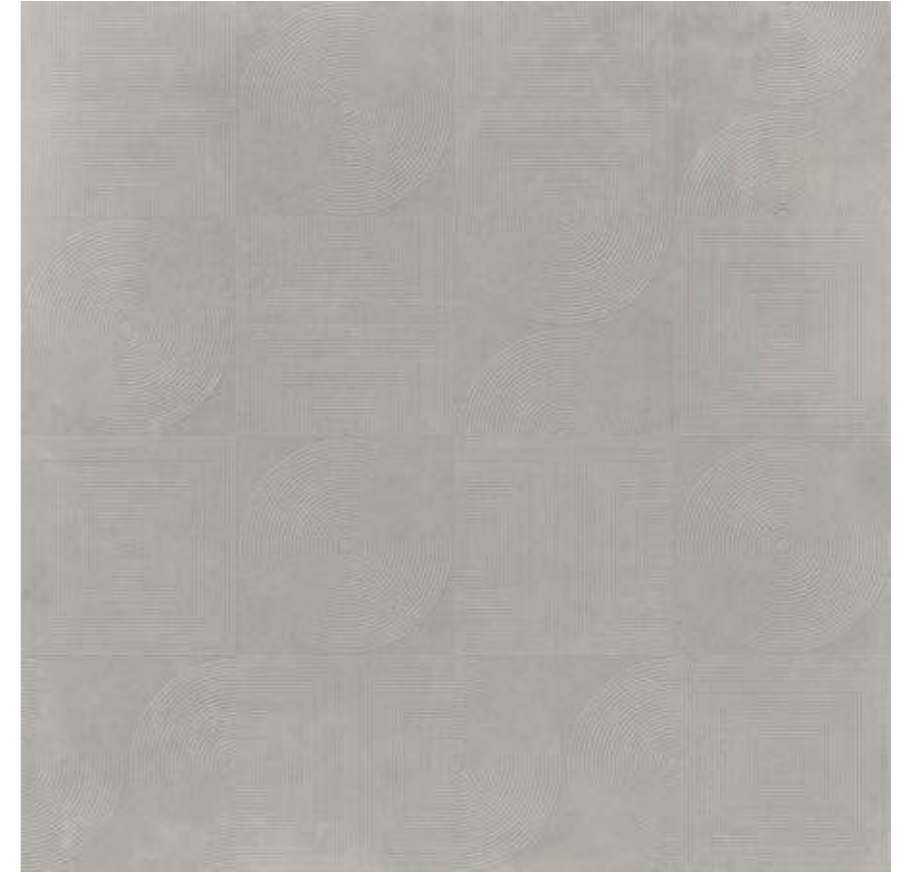




## OXYD GRIGIO FONDO



## OXYD GRIGIO FONDO DECORATO



120x120 - 48"x48"



60x120 - 24"x48"



60x60 - 24"x24"



30x30 - 12"x12"



OXYD 120G RM

OXYD 12G RM

OXYD 60G RM

MK.OXYD 30G



120x120 - 48"x48"

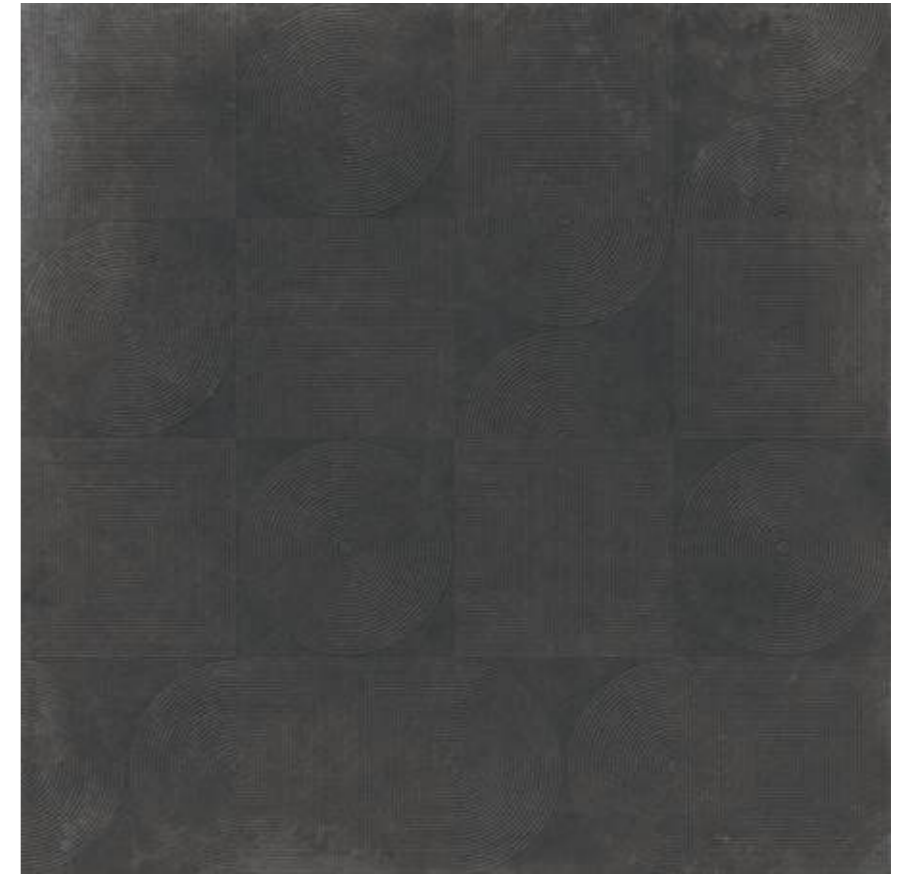


OXYDQ 120G RM

**OXYD  
 NERO  
 FONDO**



**OXYD  
 NERO  
 FONDO  
 DECORATO**



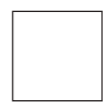
120x120 - 48"x48"

OXYD 120N RM



60x120 - 24"x48"

OXYD 12N RM



60x60 - 24"x24"

OXYD 60N RM



30x30 - 12"x12"

MK.OXYD 30N



120x120 - 48"x48"

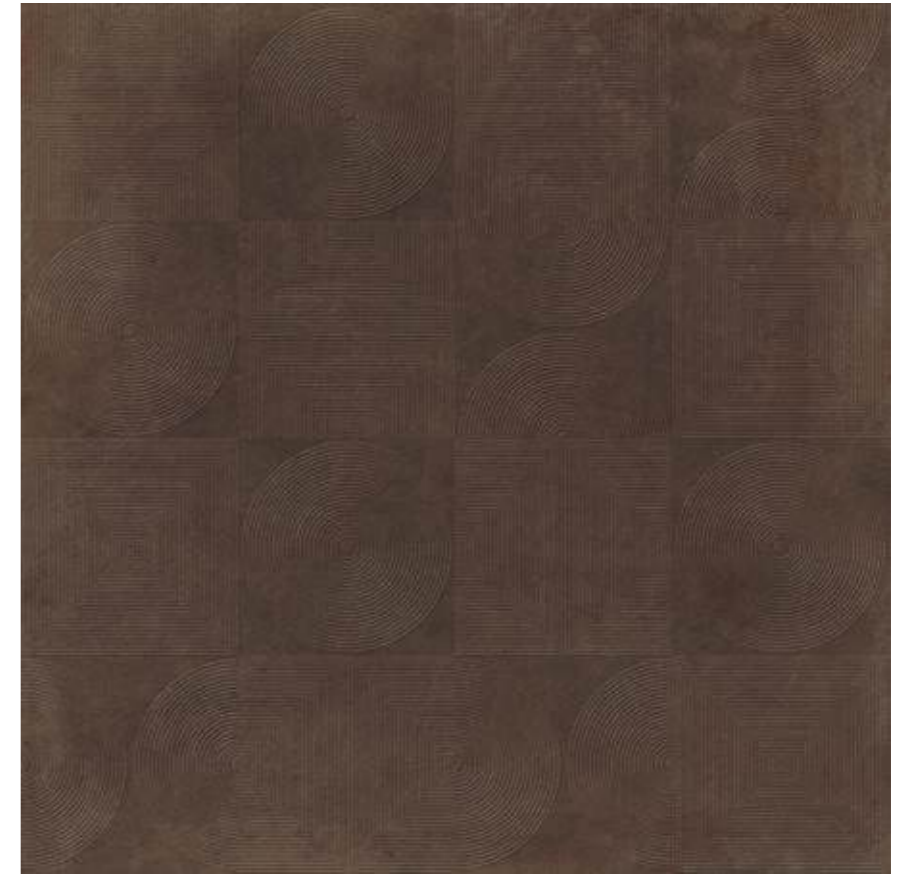
OXYDQ 120N RM



**OXYD  
 MARRONE  
 FONDO**



**OXYD  
 MARRONE  
 FONDO  
 DECORATO**



120x120 - 48"x48"



60x120 - 24"x48"



60x60 - 24"x24"



30x30 - 12"x12"

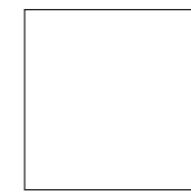


OXYD 120T RM

OXYD 12T RM

OXYD 60T RM

MK.OXYD 30T

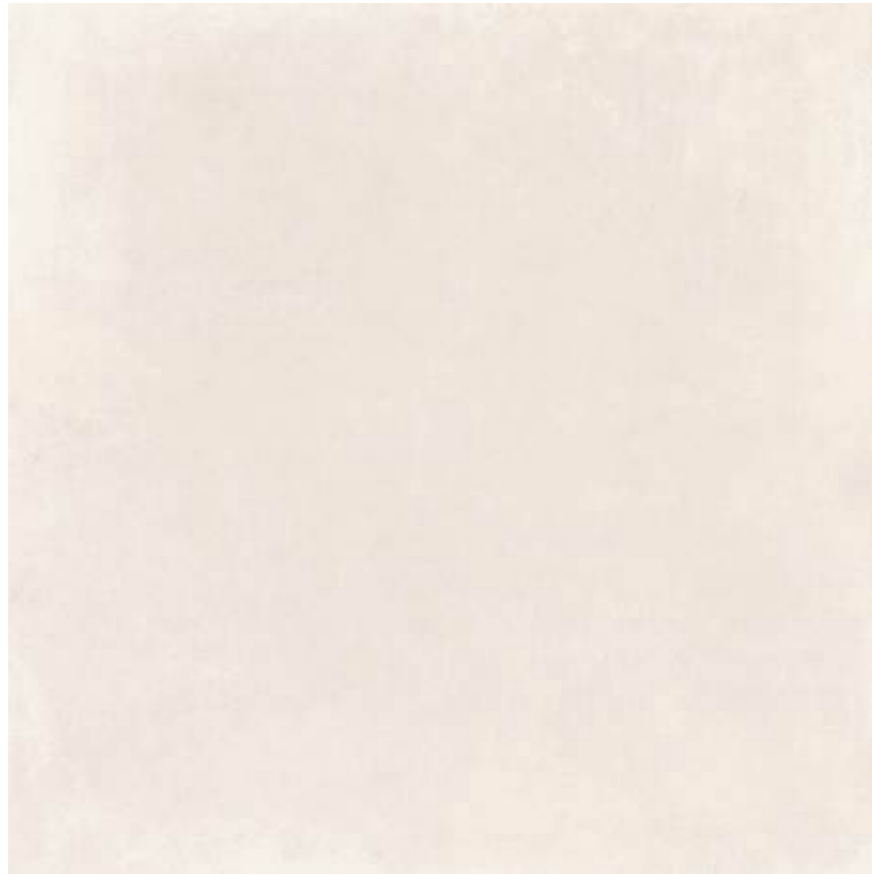


120x120 - 48"x48"

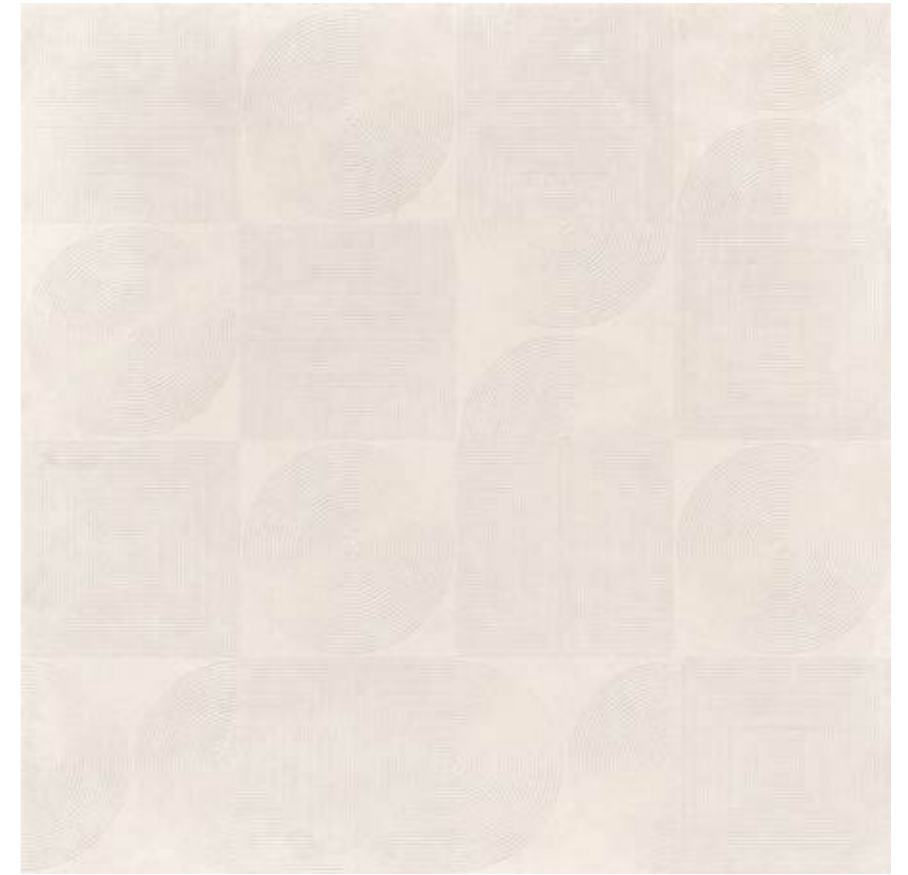


OXYDQ 120T RM

# OXYD BIANCO FONDO



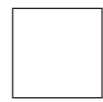
# OXYD BIANCO FONDO DECORATO



120x120 - 48"x48"



60x120 - 24"x48"



60x60 - 24"x24"



30x30 - 12"x12"

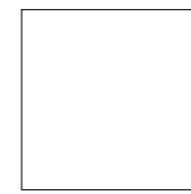


OXYD 120W RM

OXYD 12W RM

OXYD 60W RM

MK.OXYD 30W





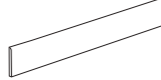

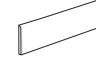

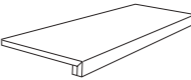

120x120 - 48"x48"



OXYDQ 120W RM

# OXYD

## PEZZI SPECIALI / SPECIAL PIECES

 	 6x120-2.4"x48" 	 6x60-2.4"x24" 	 120x32,5-48"x12.8" 
	OXYD G	OXYD BT120G	OXYD BT60G
OXYD N	OXYD BT120N	OXYD BT60N	OXYD G120N
OXYD T	OXYD BT120T	OXYD BT60T	OXYD G120T
OXYD W	OXYD BT120W	OXYD BT60W	OXYD G120W

## IMBALLI / PACKAGING

FORMATO NOMINALE NOMINAL SIZE	BORDO EDGE	SPESSORE THICKNESS	SCATOLA / BOX			PALLET		
			PZ/BOX PCS/BOX	MQ/BOX SM/BOX	KG/BOX KG/BOX	BOX/PALLET BOXES/PALLET	MQ/PALLET SM/PALLET	KG/PALLET KG/PALLET
120x120-48"x48"	RECTIFIED	10,5	1	1,44	34,57	36	51,84	1264,48
60x120-24"x48"	RECTIFIED	10,5	2	1,44	34,29	27	38,88	945,76
60x60-24"x24"	RECTIFIED	10,5	3	1,08	25,56	32	34,56	838,00
30x30-12"x12" MOSAIC	MOSAIC	10,5	6	0,54	12,51	48	25,92	620,58

## CARATTERISTICHE TECNICHE SPECIFICHE / TECHNICAL FEATURES SPECIFICATIONS

OXYD	DIN EN 16165 Annex B / DIN 51130 (R)	DIN EN 16165 Annex A / DIN 51097 (A+B+C)	B.C.R. DM 14/6/89 N. 236		PENDULUM BS EN16165 Annex C / BS7976 (INGLESE)	PENDULUM AS/NZS 4856 (AUSTRALIANO)	PENDULUM UNE 41901/ 12633 (SPAGNOLO)	BOT 3000 (DCOF) ANSI 326.3 (AMERICANO)
	R10	A+B	C.A.	G.B.	>25	P2	1	>0,42
			>0.4	>0.4	>25	P2	1	>0,42

Valori medi riferiti al prodotto integro prima della posa. / Average value referred to the full tile before installation.

Tutti i pezzi speciali non menzionati nel presente catalogo sono disponibili su richiesta e coordinabili ai fondi rettificati. / All the special pieces not mentioned in this catalogue are available on request and can be matched with rectified bases.

I pezzi speciali ed i fondi possono presentare leggere differenze di tonalità fra di loro. / Special pieces and backgrounds can have slightly different shades from one another.

Il bordo può mostrare una piccola diversità cromatica fra la superficie ed il corpo del pezzo ceramico. / There can be a slight colour difference on the edge between the surface and the main ceramic piece.

**Replay** attualizza lo storico progetto **Concrete Project** attraverso una palette colori aggiornata per esprimere un gusto ancora più contemporaneo, in linea con le attuali tendenze di design.

Una rivisitazione che mantiene intatto il fascino del minimalismo del cemento granulare, mosso da una leggera struttura, e ne espande i campi di applicazione, coniugandolo con le alte prestazioni del gres porcellanato a tutto spessore.

---

Replay modernises the historic Concrete Project with an updated colour palette that expresses an even more contemporary taste in line with current design trends.

This restyle maintains the charm of lightly textured, granular concrete minimalism and expands its fields of application by combining it with the high performance of full-body porcelain stoneware.

**Contemporary  
beat**

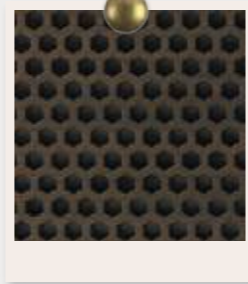
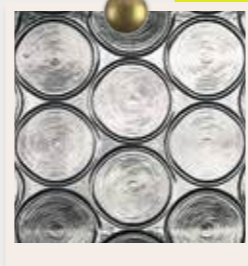
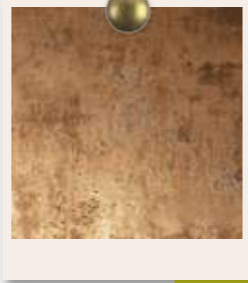
**REPLAY**

---

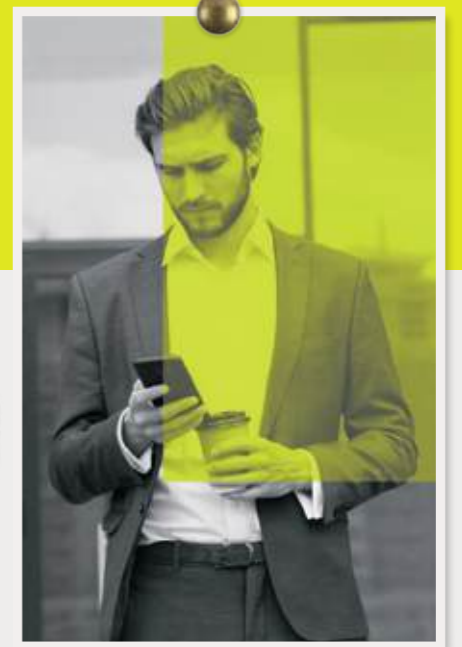
Contemporary beat



*Minimalist charm*



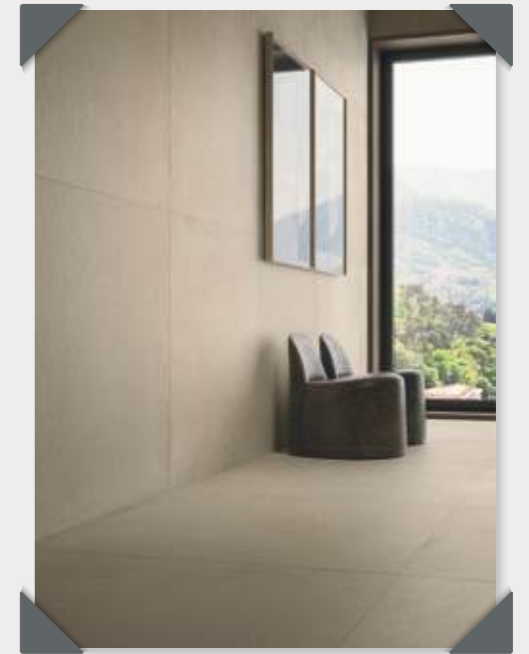
# Contemporary beat



*Material excellence*



# Replay





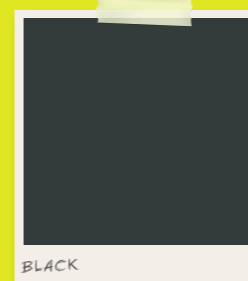


**Replay si compone di una gamma di 6 colori, dal nero ai grigi fino al bianco extra bianco e ai beige, per creare look e ispirazioni in linea con il design e l'architettura contemporanei.**

**Un progetto dall'ampia gamma di formati - quadrati e rettangolari - e di superfici - naturale, silk e outdoor - capace di dar vita ad ambienti dalle mille contaminazioni e possibilità compositive. Replay può essere utilizzato in qualsiasi destinazione d'uso, anche nei contesti sottoposti ad elevato calpestio.**

Replay features 6 colours, ranging from black to greys, and extra-white to beiges, to create looks and inspirations in line with contemporary design and architecture.

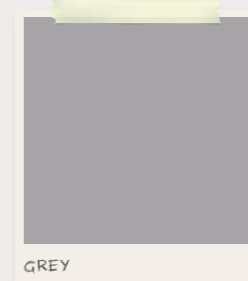
The project offers a wide range of square and rectangular formats, and natural, silk and outdoor surfaces that can create environments with endless combinations and compositional options. Replay can be used in any kind of environment, even in contexts subject to high footfall.



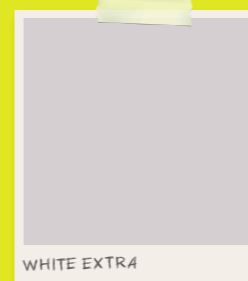
BLACK



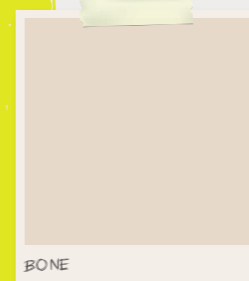
DARK GREY



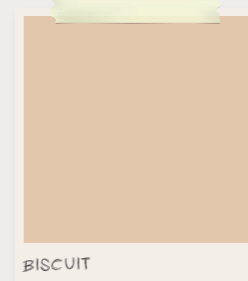
GREY



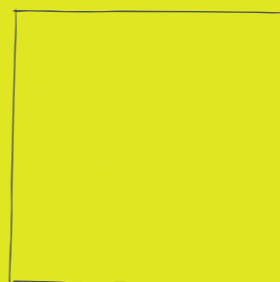
WHITE EXTRA



BONE



BISCUIT



120X120 CM



60X120 CM



60X60 CM



30X60 CM



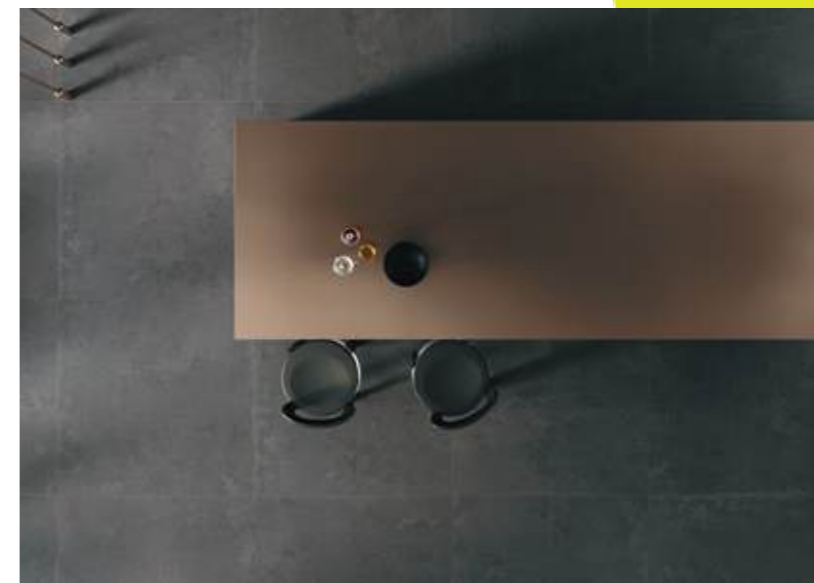
REPLAY 120G RM . REPLAY 120WX SK





ESPRESSO

American	2,00
Cappuccino	3,00
Double Espresso	3,50
Latte	4,20
Macchiato	4,50
Mist Chocolate	3,25
Mocha	4,50
White Mocha	5,00





REPLAY 120WX RM . REPLAY 120WX SK











REPLAY R120BCRM . REPLAY R120BNRM



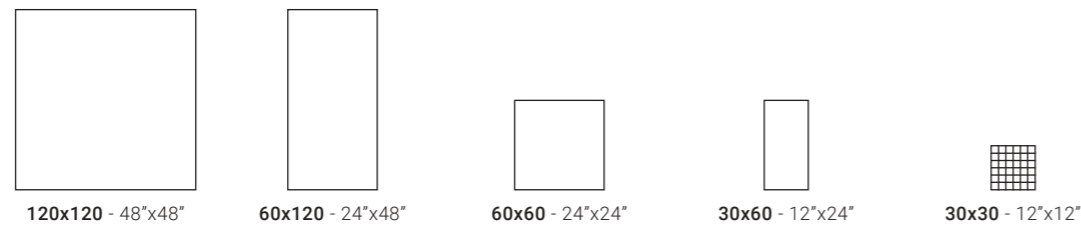


REPLAY 120DG RM . REPLAY 120DG SK

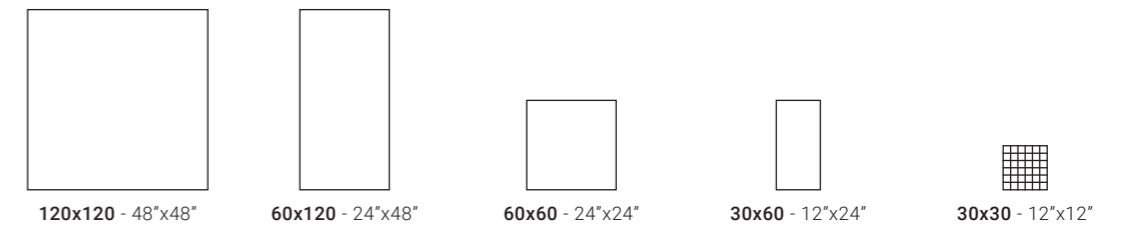
# REPLAY NERO



# REPLAY GRIGIO SCURO



REPLAY 120N RM	REPLAY 12N RM	REPLAY 60N RM	REPLAY 36N RM	MK.REPLAY 30N
REPLAY 120N SK	REPLAY 12N SK			
REPLAY R120N RM	REPLAY R60N RM			

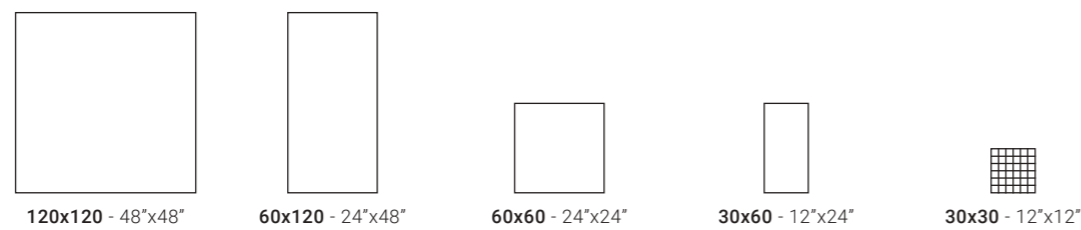
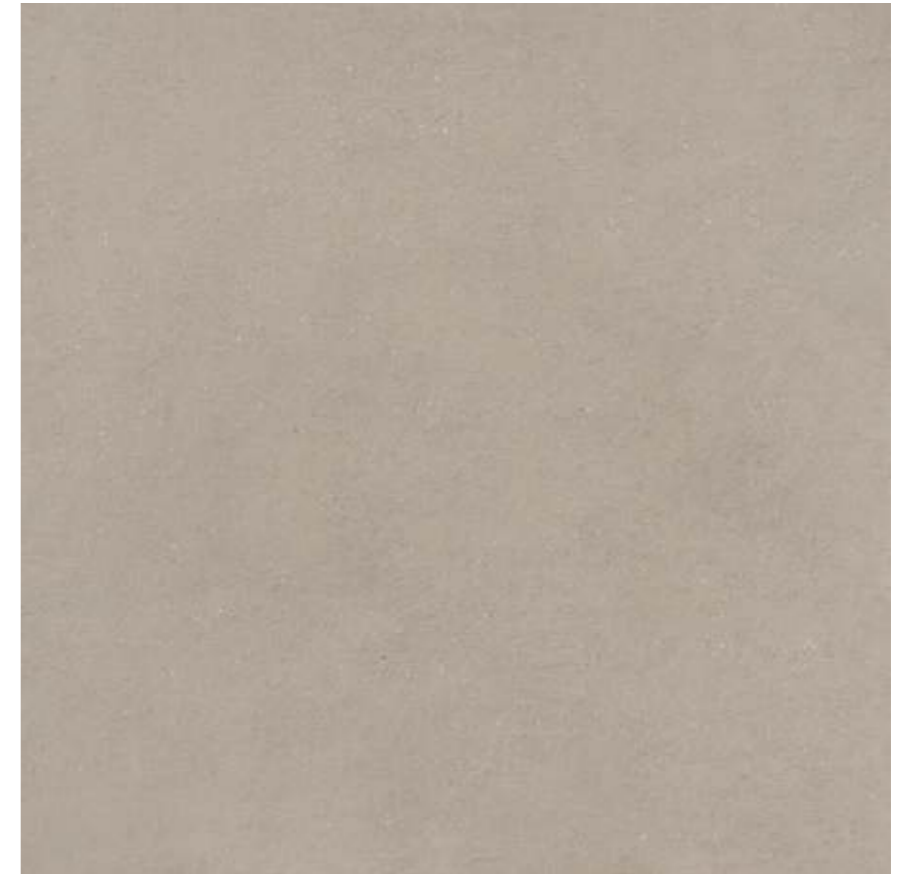


REPLAY 120DG RM	REPLAY 12DG RM	REPLAY 60DG RM	REPLAY 36DG RM	MK.REPLAY 30DG
REPLAY 120DG SK	REPLAY 12DG SK			
REPLAY R120DGRM	REPLAY R60DG RM			

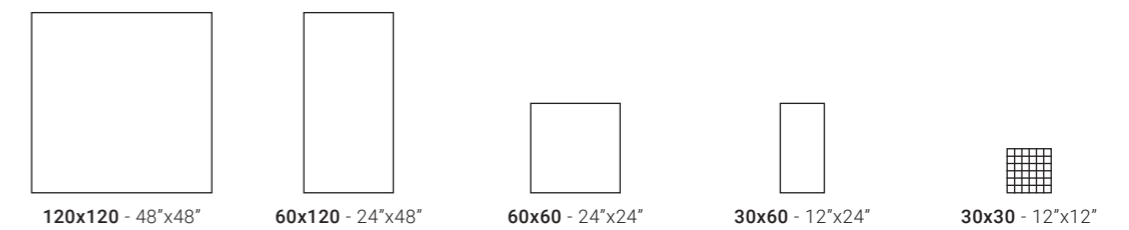
# REPLAY GRIGIO



# REPLAY BISCUIT

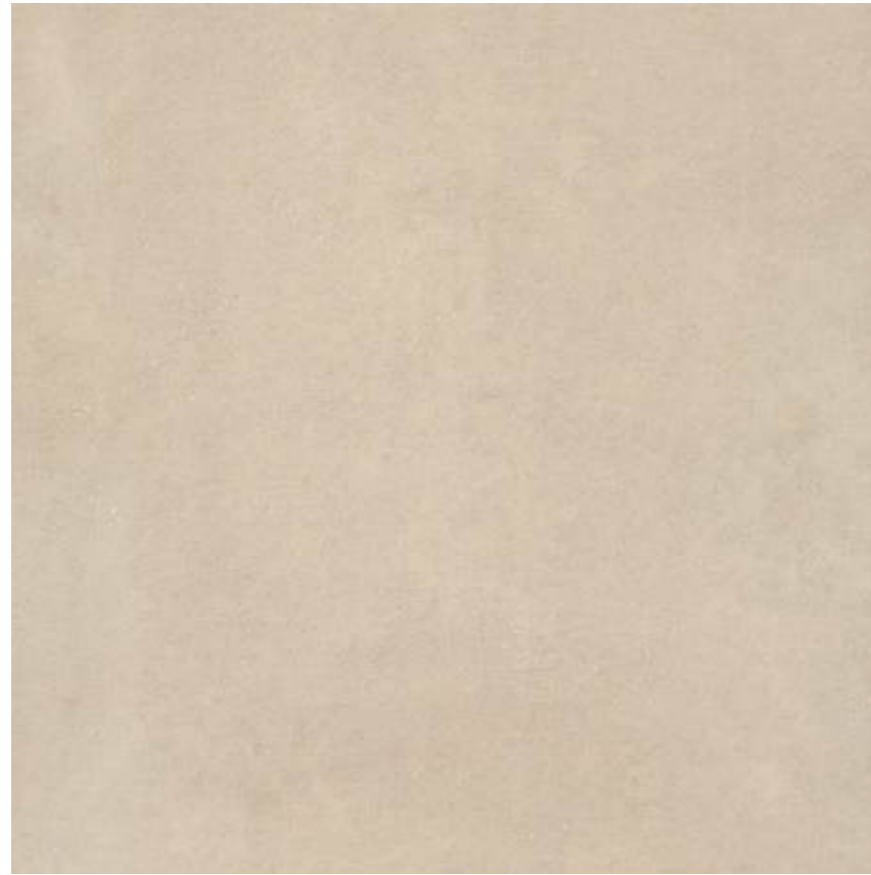


10.5			REPLAY 120G RM	REPLAY 12G RM	REPLAY 60G RM	REPLAY 36G RM	MK.REPLAY 30G
10.5			REPLAY 120G SK	REPLAY 12G SK			
10.5			REPLAY R120G RM	REPLAY R60G RM			

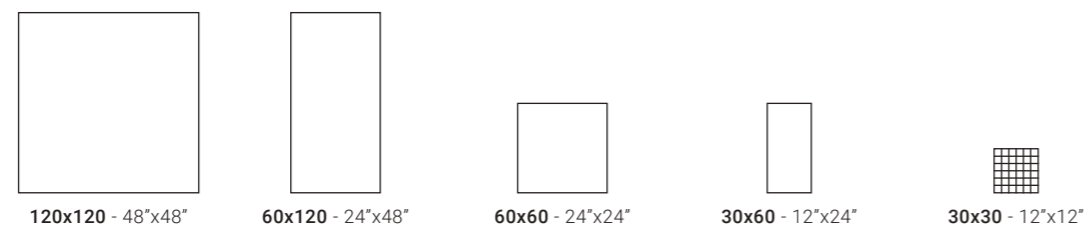
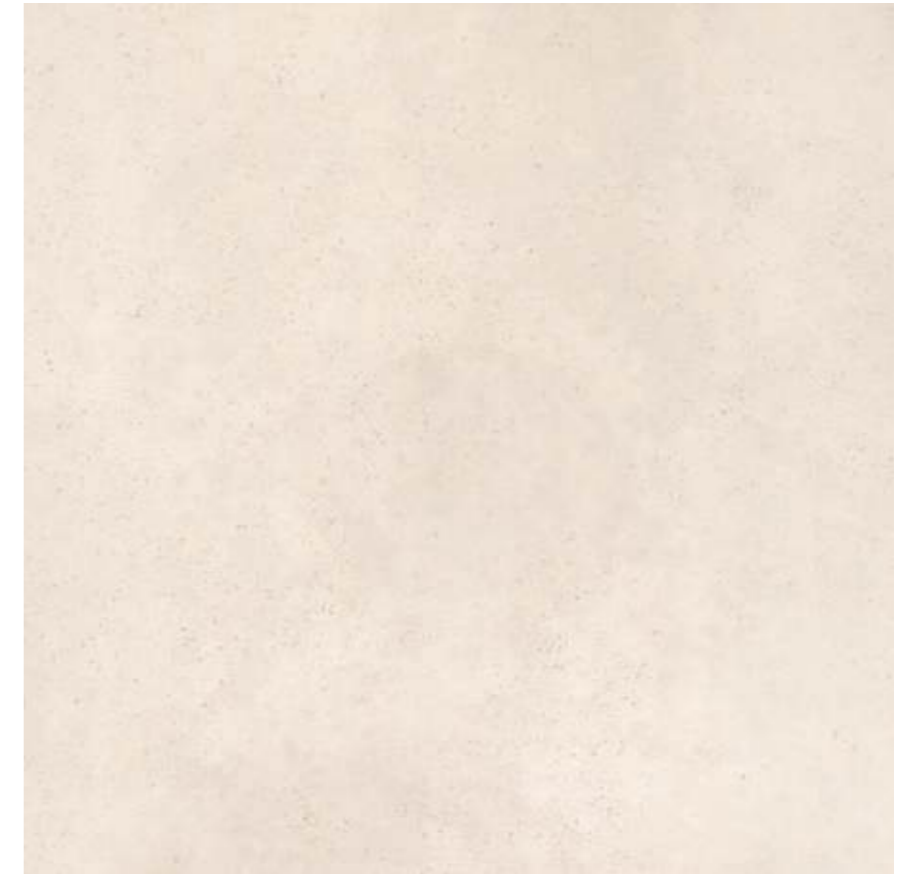


10.5			REPLAY 120BC RM	REPLAY 12BC RM	REPLAY 60BC RM	REPLAY 36BC RM	MK.REPLAY 30BC
10.5			REPLAY 120BC SK	REPLAY 12BC SK			
10.5			REPLAY R120BCRM	REPLAY R60BC RM			

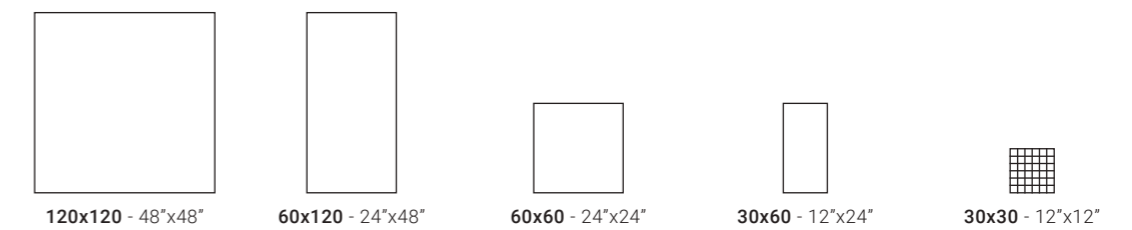
# REPLAY BONE



# REPLAY WHITE EXTRA



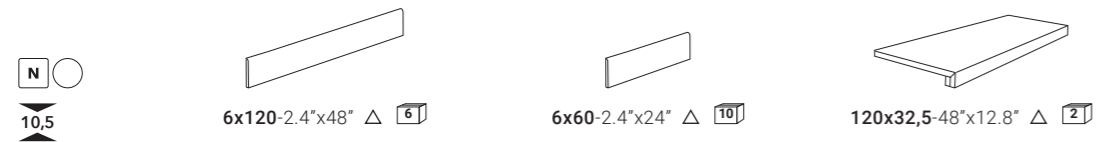
REPLAY 120BN RM	REPLAY 12BN RM	REPLAY 60BN RM	REPLAY 36BN RM	MK.REPLAY 30BN
REPLAY 120BN SK	REPLAY 12BN SK			
REPLAY R120BNRM	REPLAY R60BN RM			



REPLAY 120WX RM	REPLAY 12WX RM	REPLAY 60WX RM	REPLAY 36WX RM	MK.REPLAY 30WX
REPLAY 120WX SK	REPLAY 12WX SK			
REPLAY R120WXRM	REPLAY R60WX RM			

# REPLAY

## PEZZI SPECIALI / SPECIAL PIECES



REPLAY N	REPLAY BT120N	REPLAY BT60N	REPLAY G120N
REPLAY DG	REPLAY BT120DG	REPLAY BT60DG	REPLAY G120DG
REPLAY G	REPLAY BT120G	REPLAY BT60G	REPLAY G120G
REPLAY BC	REPLAY BT120BC	REPLAY BT60BC	REPLAY G120BC
REPLAY BN	REPLAY BT120BN	REPLAY BT60BN	REPLAY G120BN
REPLAY WX	OXYD BT120WX	REPLAY BT60WX	REPLAY G120WX

## IMBALLI / PACKAGING

FORMATO NOMINALE NOMINAL SIZE	BORDO EDGE	SPESSORE THICKNESS	SCATOLA / BOX			PALLET		
			PZ/BOX PCS/BOX	MQ/BOX SM/BOX	KG/BOX KG/BOX	BOX/PALLET BOXES/PALLET	MQ/PALLET SM/PALLET	KG/PALLET KG/PALLET
120x120-48"x48"	RECTIFIED	10,5	1	1,44	35,05	36	51,84	1281,90
60x120-24"x48"	RECTIFIED	10,5	2	1,44	34,44	27	38,88	949,93
60x60-24"x24"	RECTIFIED	10,5	3	1,08	25,31	32	34,56	830,00
30x60-12"x24"	RECTIFIED	10,5	5	0,90	22,25	48	43,20	1088,00
30x30-12"x12" MOSAIC	MOSAIC	10,5	6	0,54	12,51	48	25,92	620,58

## CARATTERISTICHE TECNICHE SPECIFICHE / TECHNICAL FEATURES SPECIFICATIONS

	DIN EN 16165 Annex B / DIN 51130 (R)	DIN EN 16165 Annex A / DIN 51097 (A+B+C)	B.C.R. DM 14/6/89 N. 236		PENDULUM BS EN16165 Annex C / BS7976 (INGLESE)	PENDULUM AS/NZS 4856 (AUSTRALIANO)	PENDULUM UNE 41901/ 12633 (SPAGNOLO)	BOT 3000 (DCOF) ANSI 326.3 (AMERICANO)
			C.A.	G.B.				
REPLAY RM	R10	A+B	>0.4	>0.4	>25	P2	1	>0,42
REPLAY SK	R9	A	>0.4	>0.4	>25	P1	0	>0,42
REPLAY R	R11	B+C	>0.4	>0.4	>36	P4	3	>0,42

Valori medi riferiti al prodotto integro prima della posa. / Average value referred to the full tile before installation.

Tutti i pezzi speciali non menzionati nel presente catalogo sono disponibili su richiesta e coordinabili ai fondi rettificati. / All the special pieces not mentioned in this catalogue are available on request and can be matched with rectified bases.

I pezzi speciali ed i fondi possono presentare leggere differenze di tonalità fra di loro. / Special pieces and backgrounds can have slightly different shades from one another.

Il bordo può mostrare una piccola diversità cromatica fra la superficie ed il corpo del pezzo ceramico. / There can be a slight colour difference on the edge between the surface and the main ceramic piece.



# Caratteristiche Tecniche Gres Porcellanato

## Technical Specifications Porcelain Stoneware

CONFORME / ACCORDING TO  
UNI EN 14411 - G Bia

CARATTERISTICA Specification	METODO DI PROVA Test methods	REQUISITI PREVISTI DALLA NORMA Requirements in accordance to the standards	VALORE MEDIO Average value						
 <b>DIMENSIONI E ASPETTO</b> DIMENSIONS AND APPEARANCE	ISO 10545-2	<b>PROSPETTO G.1</b> PROSPECT G.1	<b>CONFORME</b> COMPLIANT						
 <b>ASSORBIMENTO D'ACQUA</b> WATER ABSORPTION	ISO 10545-3	≤ 0,5%	< 0,1%						
 <b>RESISTENZA A FLESSIONE</b> FLEXURAL RESISTANCE		min. 35 N/mm <sup>2</sup>	> 45 N/mm <sup>2</sup>						
<b>SFORZO DI ROTTURA</b> MODULUS OF RUPTURE	ISO 10545-4	<b>SPESSORE / THICKNESS</b> ≥ 7,5 mm: min. 1300N	<table border="1"> <tr> <td>6,5 mm</td> <td>1800 N*</td> </tr> <tr> <td>10 mm</td> <td>3000 N*</td> </tr> <tr> <td>20 mm</td> <td>13000 N*</td> </tr> </table>	6,5 mm	1800 N*	10 mm	3000 N*	20 mm	13000 N*
6,5 mm	1800 N*								
10 mm	3000 N*								
20 mm	13000 N*								
 <b>RESISTENZA ALL'ABRAZIONE PROFONDA</b> DEEP ABRASION RESISTANCE	ISO 10545-6	≤ 175 mm <sup>3</sup>	< 140 mm <sup>3</sup>						
 <b>COEFFICIENTE DILATAZIONE TERMICA LINEARE (α)</b> LINEAR EXPANSION THERMIC COEFFICIENT	ISO 10545-8	<b>METODO DISPONIBILE</b> AVAILABLE ON REQUEST	≤ 7x10 <sup>-6</sup> °C <sup>-1</sup>						
 <b>RESISTENZA AGLI SBALZI TERMICI</b> RESISTANCE TO SUDDEN TEMPERATURE CHANGES	ISO 10545-9	<b>METODO DISPONIBILE</b> AVAILABLE ON REQUEST	<b>RESISTE</b> RESISTANT						
 <b>RESISTENZA AL GELO</b> FROST RESISTANCE	ISO 10545-12	<b>RICHIESTA</b> ALWAYS TESTED	<b>RESISTE</b> RESISTANT						
 <b>PRODOTTI CHIMICI AD USO DOMESTICO ED ADDITIVI PER PISCINA</b> HOUSEHOLD CHEMICALS AND SWIMMING POOL WATER CLEANERS		min. B	min. B						
<b>ACIDI ED ALCALI A BASSA CONCENTRAZIONE</b> ACIDS AND LOW CONCENTRATION ALKALIS	ISO 10545-13	<b>DA LA, LB A LC</b> FROM LA, LB TO LC	<b>DA LA, LB A LC</b> FROM LA, LB TO LC						
<b>ACIDI ED ALCALI AD ALTA CONCENTRAZIONE</b> ACIDS AND HIGH CONCENTRATION ALKALIS		<b>METODO DISPONIBILE</b> AVAILABLE ON REQUEST	<b>METODO DISPONIBILE</b> AVAILABLE ON REQUEST						
 <b>RESISTENZA ALLE MACCHIE UGL</b> STAIN RESISTANCE UGL		<b>METODO DISPONIBILE</b> AVAILABLE ON REQUEST	<b>METODO DISPONIBILE</b> AVAILABLE ON REQUEST						
<b>RESISTENZA ALLE MACCHIE GL</b> STAIN RESISTANCE GL	ISO 10545-14	min. 3	min. 3						



\* VALORI RIFERITI AL FORMATO 60X60 / VALUES REFERRED TO 60X60 SIZE

# Simbologia

## Symbols






### INDICAZIONI D'USO

#### INDICATIONS FOR USE

-  Pavimento  
Floor tiles
-  Rivestimento  
Wall tiles

### DESTINAZIONI D'USO

#### SUGGESTED APPLICATIONS



-  Abitazioni  
Domestic purpose
-  Commerciale leggero  
Light commercial
-  Commerciale  
Commercial
-  Commerciale pesante  
Heavy traffic area
-  Esterni  
Outdoor floor

### SUPERFICI

#### SURFACES



#### Finitura

#### Finish

-  Naturale  
Natural
-  Silk  
Silk


#### Aspetto superficiale

#### Surface look

-  Opaco  
Matt
-  Semilucido  
Semi-glossy

#### Bordo

#### Edge

-  Rettificato monocalibro  
Monocaliber, rectified

### STONALIZZAZIONE

#### SHADE VARIATION

-  V2



### SPESSORE

#### THICKNESS

-  10.5

### CARATTERISTICHE DI VENDITA

#### SALES CHARACTERISTICS

-  Imballo.  
Packaging.
-  Prodotto venduto al pezzo.  
Product sold per item.

Tutti i nostri prodotti, sia al mq che al pezzo, sono venduti unicamente a scatola completa.  
All our products are sold only in complete boxes, whether the unit of measure is per item or per square metre.



imolaceramica.it

Marketing CC Imola



**A brand of  
Cooperativa Ceramica d'Imola S.c.**

Via V. Veneto, 13  
40026 Imola (BO) Italia  
Tel. +39 0542 601601  
Fax +39 0542 31749



COOPERATIVA

**C E R A M I C A**

IMOLA-DAL 1874

**150 YEARS  
YOUNG**