

# +ONE



48"X48"

+ ONE



Floor: +One\_48"x48"\_Greige\_Matte

## CONCRETE BEAUTY

+ ONE's contemporary soul, which captures the look and the essence of poured concrete, is capable of creating a clean and simple style and giving each project a personal warm feeling and great visual charm. Its extreme attention to detail gives the environment elegance and vitality. Six outstanding color options and two finishes tell the inspiration of the authentic American industrial design, perfect for both residential and high-traffic commercial projects.

Six colors: chalk, greige, mud, ash, plumb and coal.  
Available in 12"x24", 24"x24", 24"x48", and 48"x48" floor & wall tile, 12"x12" mosaics.



WALL  
48"x48"

FLOOR  
48"x48"

Wall: +One\_48"x48"\_Chalk\_Matte  
Floor: +One\_48"x48"\_Chalk\_Matte  
Furniture: Jem\_Capriccio Grey\_Polished

# +ONE CONCRETE BEAUTY

**4 Sizes:** 12"x24" - 24"x24" - 24"x48" - 48"x48" (only matte)

**6 Colors:** Chalk, Greige, Mud, Ash, Plumb, Coal

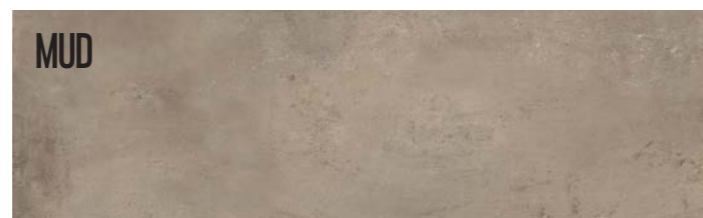
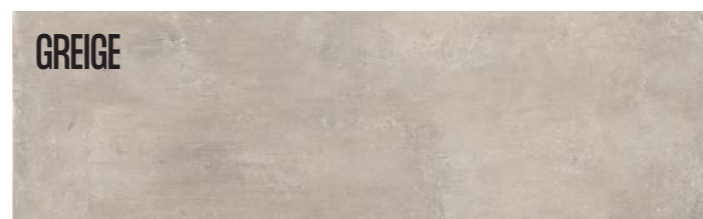
**2 Surfaces:** Matte & Polished

48"x48"  
AVAILABLE IN:  
CHALK  
GREIGE  
ASH  
COAL

24"x24"

12"x24"

24"x48"



# OUTDOOR 2CM

**3 Sizes:** 12"x48" - 24"x24" - 24"x48" - 20 mm

**3 Colors:** Chalk, Greige, Ash

**1 Surface:** Matte

24"x24"

24"x48"

12"x48"

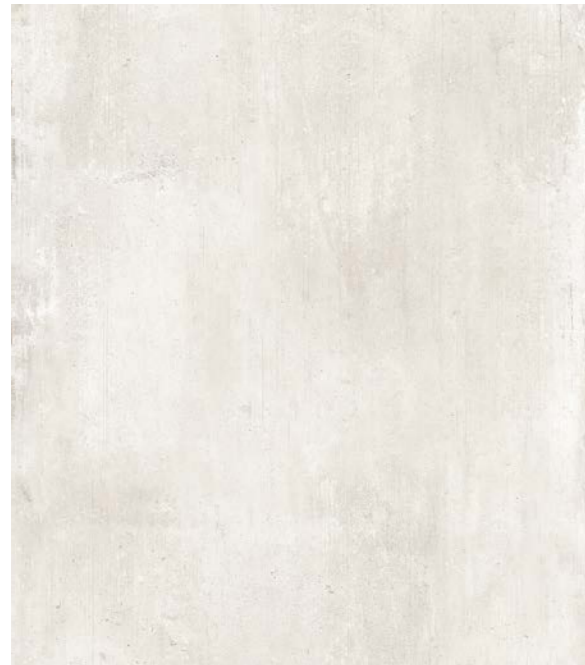
Available in:





# CHALK

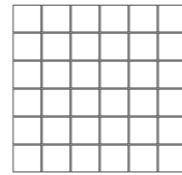
Sizes, mosaic and trim pieces



12"x24" - 1101130 Matte  
12"x24" - 1101226 Polished  
24"x24" - 1101112 Matte  
24"x24" - 1101208 Polished  
24"x48" - 1101088 Matte  
24"x48" - 1101184 Polished  
48"x48" - 1103357 Matte

Thickness 20mm

12"x48" - 1101411 Matte  
24"x24" - 1101414 Matte  
24"x48" - 1101841 Matte



12"x12" Mosaic (2"x2" - 36 dot)  
1101148 Matte  
1101238 Polished



3"x24" Bullnose  
1101142 Matte  
1101232 Polished



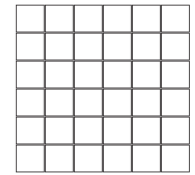
6"x12" Cove Base  
(\*special order only)  
1101136

# MUD

Sizes, mosaic and trim pieces



12"x24" - 1101132 Matte  
12"x24" - 1101228 Polished  
24"x24" - 1101114 Matte  
24"x24" - 1101210 Polished  
24"x48" - 1101090 Matte  
24"x48" - 1101186 Polished



12"x12" Mosaic (2"x2" - 36 dot)  
1101150 Matte  
1101240 Polished



3"x24" Bullnose  
1101144 Matte  
1101234 Polished



6"x12" Cove Base  
(\*special order only)  
1101138

# GREIGE

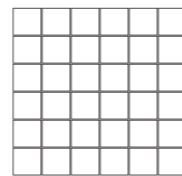
Sizes, mosaic and trim pieces



12"x24" - 1101131 Matte  
12"x24" - 1101227 Polished  
24"x24" - 1101113 Matte  
24"x24" - 1101209 Polished  
24"x48" - 1101089 Matte  
24"x48" - 1101185 Polished  
48"x48" - 1103358 Matte

Thickness 20mm

12"x48" - 1101412 Matte  
24"x24" - 1101415 Matte  
24"x48" - 1101842 Matte



12"x12" Mosaic (2"x2" - 36 dot)  
1101149 Matte  
1101239 Polished



3"x24" Bullnose  
1101143 Matte  
1101233 Polished



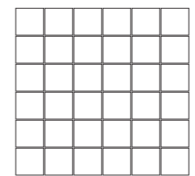
6"x12" Cove Base  
(\*special order only)  
1101137

# ASH

Sizes, mosaic and trim pieces



12"x24" - 1101133 Matte  
12"x24" - 1101229 Polished  
24"x24" - 1101115 Matte  
24"x24" - 1101211 Polished  
24"x48" - 1101091 Matte  
24"x48" - 1101187 Polished  
48"x48" - 1103359 Matte



12"x12" Mosaic (2"x2" - 36 dot)  
1101151 Matte  
1101241 Polished



3"x24" Bullnose  
1101145 Matte  
1101235 Polished



6"x12" Cove Base  
(\*special order only)  
1101139

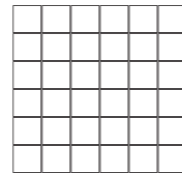


# PLUMB

Sizes, mosaic and trim pieces



12"x24" - 1101134 Matte  
 12"x24" - 1101230 Polished  
 24"x24" - 1101116 Matte  
 24"x24" - 1101212 Polished  
 24"x48" - 1101092 Matte  
 24"x48" - 1101188 Polished



12"x12" Mosaic (2"x2" - 36 dot)  
 1101152 Matte  
 1101242 Polished



3"x24" Bullnose  
 1101146 Matte  
 1101236 Polished



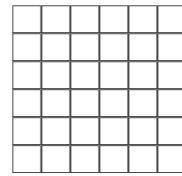
6"x12" Cove Base  
 (\*special order only)  
 1101140

# COAL

Sizes, mosaic and trim pieces



12"x24" - 1101135 Matte  
 12"x24" - 1101231 Polished  
 24"x24" - 1101117 Matte  
 24"x24" - 1101213 Polished  
 24"x48" - 1101093 Matte  
 24"x48" - 1101189 Polished  
 48"x48" - 1103360 Matte



12"x12" Mosaic (2"x2" - 36 dot)  
 1101153 Matte  
 1101243 Polished



3"x24" Bullnose  
 1101147 Matte  
 1101243 Polished



6"x12" Cove Base  
 (\*special order only)  
 1101141



Floor: +One\_12"x24" \_24"x24" \_Chalk\_Matte





Floor: +One\_24"x48"\_Greige\_Matte  
Backsplash:+One\_12"x24"\_Greige\_Polished





Floor: +One\_48"x48"\_Ash\_Matte





Floor: +One\_24"x24"\_Plumb\_Matte  
Backsplash: +One\_12"x12"\_Mosaic\_Plumb\_Polished





Floor: +One\_48"x48"\_Coal\_Matte



Floor: +One\_24"x48"\_Coal\_Matte









Floor: +One\_12"x48"\_Greige\_2 CM



Floor: +One\_24"x24"\_Ash\_2 CM

## Colors + Sizes

RECTIFIED COLOR BODY



Colors	12"x24"	24"x24"	24"x48"	48"x48"	12"x48" 2 cm	24"x24" 2 cm	24"x48" 2 cm	12"x12" mosaic (2"x2")	3"x24" bullnose	6"x12" cove base
CHALK	1101130 Matte  1101226 Polished	1101112 Matte  1101208 Polished	1101088 Matte  1101184 Polished	1103357 Matte	1101411 Matte	1101414 Matte	1101841 Matte	1101148 Matte  1101238 Polished	1101142 Matte  1101232 Polished	1101136
GREIGE	1101131 Matte  1101227 Polished	1101113 Matte  1101209 Polished	1101089 Matte  1101185 Polished	1103358 Matte	1101412 Matte	1101415 Matte	1101842 Matte	1101149 Matte  1101239 Polished	1101143 Matte  1101233 Polished	1101137
MUD	1101132 Matte  1101228 Polished	1101114 Matte  1101210 Polished	1101090 Matte  1101186 Polished	-	-	-	-	1101150 Matte  1101240 Polished	1101144 Matte  1101234 Polished	1101138
ASH	1101133 Matte  1101229 Polished	1101115 Matte  1101211 Polished	1101091 Matte  1101187 Polished	1103359 Matte	1101413 Matte	1101416 Matte	1101843 Matte	1101151 Matte  1101241 Polished	1101145 Matte  1101235 Polished	1101139
PLUMB	1101134 Matte  1101230 Polished	1101116 Matte  1101212 Polished	1101092 Matte  1101188 Polished	-	-	-	-	1101152 Matte  1101242 Polished	1101146 Matte  1101236 Polished	1101140
COAL	1101135 Matte  1101231 Polished	1101117 Matte  1101213 Polished	1101093 Matte  1101189 Polished	1103360 Matte	-	-	-	1101153 Matte  1101243 Polished	1101147 Matte  1101243 Polished	1101141



# Technical Specifications



This product meets or exceeds all standards described in ANSI A137.1 & A137.3.  
Este producto cumple o excede todos los estandares de ANSI A137.1 & A137.3.

	SPECS	TEST METHOD	INDUSTRY STANDARD	MILE <sup>stone</sup> VALUES	
	WATER ABSORPTION	ASTM C373	≤0.5%	≤0.5%	
	SURFACE WEAR RESISTANCE	ANSI A137.1	Surface Wear-resistance properties of glazed vitreous and porcelain tiles.	ALL RESIDENTIAL / COMMERCIAL	
	CHEMICAL RESISTANCE	ASTM C650	A tile sample is placed in continuous contact with a variety of chemicals for 24 hours. Sample must show no visible defects.	NOT AFFECTED	
	D.C.O.F. AcuTest®	ANSI A326.3	INDOOR ≥0.42 WET	≥0.42 WET	
			OUTDOOR >0.55 WET	>0.55 WET 2CM & GRIP	
	STAIN RESISTANCE	ASTM C1378	Surfaces are exposed to staining agents for 24 hours followed by four cleaning procedures. Results are recorded post cleaning.	NOT AFFECTED	
	BREAKING STRENGTH GAUGED PORCELAIN 6MM	ASTM C1505	≥175 lbf	≥200 lbf	
	BREAKING STRENGTH	ASTM C648	≥275 lbf	≥300 lbf	
	BREAKING STRENGTH OUTDOOR 2CM	ASTM 1505	2000 lbf (10.9 kN)	≥2500 lbf	
	RESISTANCE TO FREEZE	ASTM C1026	A tile sample is subjected to repeated processes of freezing and thawing. Sample must show no visible defects.	RESISTANT	
	WARPAGE EDGE	ASTM C485	±0.40% or ±0.05 in (±1.8 mm)	± 0.40%	Rectified
	WARPAGE DIAGONAL	ASTM C485	±0.40% or ±0.07 in (±1.8 mm)	± 0.40%	Rectified
	WEDGING	ASTM C502	±0.25% or ±0.03 in (±0.8 mm)	± 0.25%	Rectified
	WARPAGE EDGE	ASTM C485	±0.50% or ±0.07 in (±1.8 mm)	± 0.50%	Calibrated
	WARPAGE DIAGONAL	ASTM C485	±0.50% or ±0.07 in (±1.8 mm)	± 0.50%	Calibrated
	WEDGING	ASTM C502	±0.50% or ±0.08 in (±2.0 mm)	± 0.50%	Calibrated
	THICKNESS GAUGED PORCELAIN	ASTM C499	Range: ± 0.02 in	≤0.02 in	
	THICKNESS	ASTM C499	Range: ± 0.04 in	≤0.04 in	
	LENGTH / WIDTH VARIATION	ASTM C499	±0.25% or ±0.03 in (±0.8 mm)	±0.25%	

• Due to the inherent nature of fired porcelain tile, it is important to note that the coefficient of friction may vary within and between product runs.

# Green Certifications & Accreditations

	DESCRIPTION
	Declare labels disclose all intentionally added ingredients and residuals present in the final product. Being Red List Free means the worst materials, chemicals, and elements for human and environmental health are not present within our products.
	The Health Product Declaration Collaborative transparency declaration for all of Florim USA's naturally occurring materials.
	Certification of plant and product specific Environmental Product Declaration (EPD) which tracks environmental impacts from the production of porcelain tile.
	Tile Council of North America and the American National Standards Institute's standard for sustainability and environmental impact.
	Underwriter's Laboratories certification of low emitting materials. Florim USA is Green Guard Gold certified.
	Defines post-consumer content of as much as 3% recycled material which reduces landfill impact. Certified by Bureau Veritas.
	Defines pre-consumer content of as much as 45% recycled material which reduces our carbon footprint. Certified by Bureau Veritas.
	Florim USA's sustainability and social practices support the mission of The International Living Future Institute which strives to create a socially just, culturally rich, and ecologically restorative community.
	USGBC is committed to suit a more sustainable life. Florim USA supports this mission by manufacturing products which aid architects in achieving USGBC certification.
	Florim USA sources >95% raw material within a 500 mile radius, which results in a smaller carbon footprint.
	Florim USA actively participates in the Tile Council of North America which allows us to be on the forefront of advances in the tile industry and its standards.
	The Tennessee Recycling Coalition is dedicated to promoting recycling and sustainable material management practices, and awarded Florim USA the Tennessee Recycler of the Year award for 2020.
	ISO 9001 & ISO 14001 are globally recognized standards. ISO 9001 certifies that Florim USA products and practices continually meet and exceed customer and regulatory requirements. ISO 14001 certifies that Florim USA complies with environmental regulations and that it's manufacturing practices are environmentally conscious.
	Florim USA updated its corporate charter in 2022 to become a Benefit Corporation. Our company is committed to maintaining this designation through initiatives focused on sustainability, social responsibility, ethical business practices and transparent, annual reporting on our social and environmental performance.



## Progress that invests in the entire society

As an active member of the U.S Green Building Council, MILE<sup>®</sup>stone spreads awareness to the community and encourages the use of building solutions through environmentally friendly practices.

Our products positively contribute to the requirements for obtaining the LEED (Leadership in Energy and Environmental Design) and WELL (IWBI) certifications.

## A commitment to environmental sustainability and responsibility

We are committed to conscious development that minimizes the negative impact of manufacturing production on the environment. Our general approach to sustainability intersects with our business strategy to embrace three areas of responsibility: economic, social, and environmental. Some ways we prove this are:

- Products containing as much as 45% recycled content.
- Post-consumer recycled content levels as much as 3%.
- Zero industrial wastewater discharge.
- A 99% internal process recycling rate.
- Local sourcing of >95% raw materials (within 500-mile radius of factory) resulting in low transportation related carbon emissions.

MILE<sup>®</sup>stone is taking these and other steps, as well as actively investing to reduce carbon emissions to ensure that we reach full carbon neutrality.



## Cleaning & Maintenance / Routine Care Instructions



Scan the QR code with your smartphone.



MADE IN THE USA



300 International Blvd. Clarksville, TN 37040 | [www.milestonetiles.com](http://www.milestonetiles.com) | 1-877-356-7461

