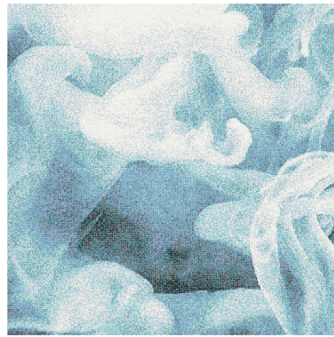




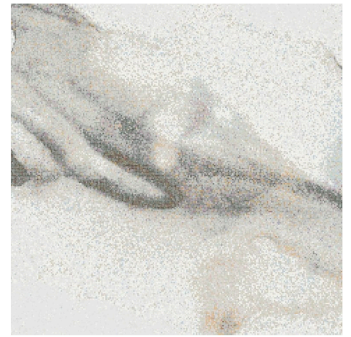
STEAM 01



STEAM 02



WATERCOLOR 01



WATERCOLOR 2



VELVET 01



VELVET 02

PRODUCT DESCRIPTION

Traditional Opus tessellatum technique made by hand-cutting each tile that allows a pattern to curve following natural lines.

SIZES & DIMENSIONS



1 x 1 cm | 3/8" x 3/8"

MATERIAL & TEXTURE

- Material: Glass
- Texture: Opaque
- Thickness: 4 mm | 5/32"
- Joint: 1 mm | 2/48"
- Weaving, flared and chamfered tesserae are available in sheets of 31,59 cm x 31,59 cm | 12 7/16" x 12 7/16"