

MDI



NON-SLIP FLOOR TILES

STYLE-**in**

 **inalco**



INALCO's wide range of non-slip products combine design appeal with the high technical performance required for more demanding projects.

INALCO's non-slip floor tiles feature ultimate technical characteristics such as withstand sharp temperature changes, have almost nil water absorption and high resistance, making them ideal for use in wet areas and outdoor ones, like terraces, exterior staircases and swimming pools, among others.

The collections are also conspicuous for their elegant modern designs, allowing for the continuity of trendy indoor-outdoor spaces, a highly demanded issue by professionals that highlights the added value of the INALCO product.

INALCO's non-slip floor tiles meet and exceed the slip resistance safety requirements of leading international standards.

NON-SLIP PRODUCT: CLASS 3 - R12 - A+B+C

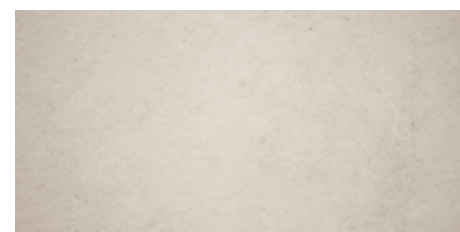
NON-SLIP PRODUCT: CLASS 3 - R12 - A+B+C



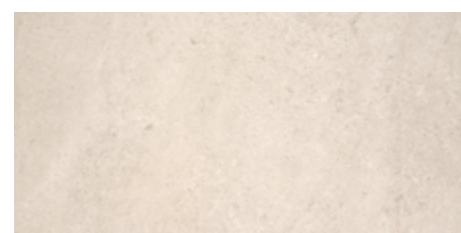
MASAI  
Blanco Plus



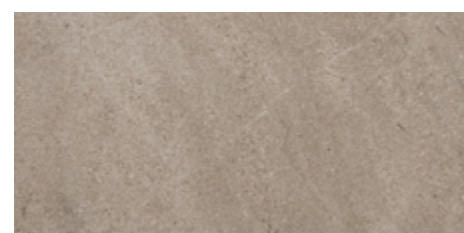
PACIFIC  
Blanco Plus



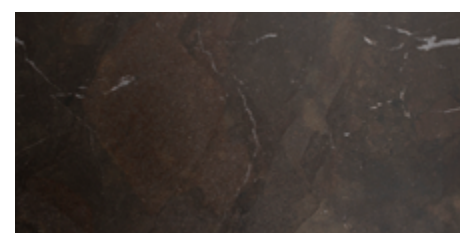
SOHO  
Blanco



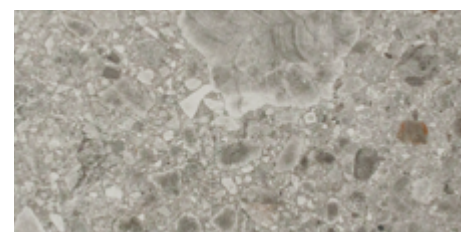
PETRA  
Crema



JASPER  
Moka



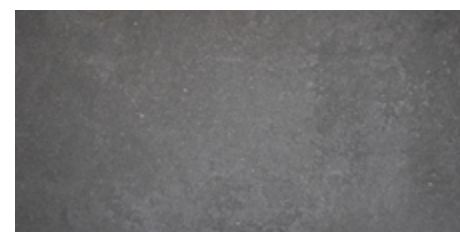
UMBRA  
Marrón



ISEO  
Gris



METEORA  
Gris



MOON  
Gris

| PRODUCT                      | FORMAT       | THICKNESS | PACKING |        |            |             |           |          |
|------------------------------|--------------|-----------|---------|--------|------------|-------------|-----------|----------|
|                              |              |           | SQM Box | Kg Box | Pieces Box | Cajas Palet | SQM Palet | Kg Palet |
| ISEO GRIS NON-SLIP           | 100 x 100 cm | 10,5 mm   | 2       | 49     | 2          | 24          | 48        | 1235     |
| JASPER MOKA NON-SLIP         |              |           |         |        |            |             |           |          |
| MASAI BLANCO PLUS NON-SLIP   |              |           |         |        |            |             |           |          |
| METEORA GRIS NON-SLIP        |              |           |         |        |            |             |           |          |
| PACIFIC BLANCO PLUS NON-SLIP |              |           |         |        |            |             |           |          |
| PETRA CREMA NON-SLIP         |              |           |         |        |            |             |           |          |
| SOHO BLANCO NON-SLIP         |              |           |         |        |            |             |           |          |
| MOON GRIS NON-SLIP           | 20 x 30      | 20 mm     | 0,24    | 11,16  | 4          | 128         | 30,72     | 1360     |
| UMBRA MARRÓN NON-SLIP        |              |           |         |        |            |             |           |          |
| MOON GRIS NON-SLIP           | 20 x 20      | 20 mm     | 0,24    | 11,17  | 6          | 120         | 26,80     | 1361     |
| UMBRA MARRÓN NON-SLIP        |              |           |         |        |            |             |           |          |

| NORM<br>ASTM-C 1028 COF | NORM<br>ANSI A 137.1 DCOF | NORM<br>UNE-ENV 12633      | NORM DIN 51130 | NORM DIN 51097 |
|-------------------------|---------------------------|----------------------------|----------------|----------------|
| > 0,6<br>Dry and wet    | > 0,42<br>Dry and wet     | CLASS 3*<br>(Results > 65) | R12*           | A+B+C*         |

\* INALCO's non-slip products highly exceed the maximum slip resistance safety requirements of leading international standards.

## NON-SLIP VALUES INALCO PRODUCTS

| COLLECTION                      | NORM<br>ASTM-C 1028-96: COF | NORM<br>ANSI A 137.1: 2012 DCOF | NORM<br>UNE-ENV 12633 | NORM<br>DIN 51130 | NORM<br>DIN 51097 |
|---------------------------------|-----------------------------|---------------------------------|-----------------------|-------------------|-------------------|
| <b>ALEA</b><br>Natural          | > 0,6<br>Dry and wet        | > 0,42<br>Dry and wet           | CLASS 1               | R9                | A                 |
| <b>ANTAL</b><br>Bush-hammered   | > 0,6<br>Dry and wet        | > 0,42<br>Dry and wet           | CLASS 2               | R10               | A+B               |
| <b>ARIZONA</b><br>Natural       | > 0,6<br>Dry and wet        | > 0,42<br>Dry and wet           | CLASS 1               | R9                | A                 |
| <b>ASTRAL</b><br>Natural        | > 0,6<br>Dry and wet        | > 0,42<br>Dry and wet           | CLASS 1               | R9                | A                 |
| <b>AZALAI</b><br>Natural        | > 0,6<br>Dry and wet        | > 0,42<br>Dry and wet           | CLASS 1               | R9                | A                 |
| <b>BOSCO</b><br>Natural         | > 0,6<br>Dry and wet        | > 0,42<br>Dry and wet           | CLASS 1               | R9                | A                 |
| <b>FLUORITE</b><br>Natural      | > 0,6<br>Dry and wet        | > 0,42<br>Dry and wet           | CLASS 1               | R9                | A                 |
| <b>FUSION</b><br>Natural        | > 0,6<br>Dry and wet        | > 0,42<br>Dry and wet           | CLASS 1               | R9                | A                 |
| <b>GEO</b><br>Bush-hammered     | > 0,6<br>Dry and wet        | > 0,42<br>Dry and wet           | CLASS 2               | R10               | A+B               |
| <b>GROUND</b><br>Natural        | > 0,6<br>Dry and wet        | > 0,42<br>Dry and wet           | CLASS 1               | R9                | A                 |
| <b>ICE</b><br>Natural           | > 0,6<br>Dry and wet        | > 0,42<br>Dry and wet           | CLASS 1               | R9                | A                 |
| <b>ISEO</b><br>Bush-hammered    | > 0,6<br>Dry and wet        | > 0,42<br>Dry and wet           | CLASS 2               | R10               | A+B               |
| <b>ISEO</b><br>Non-Slip         | > 0,6<br>Dry and wet        | > 0,42<br>Dry and wet           | CLASS 3               | R12               | A+B+C             |
| <b>JASPER</b><br>Bush-hammered  | > 0,6<br>Dry and wet        | > 0,42<br>Dry and wet           | CLASS 2               | R10               | A+B               |
| <b>JASPER</b><br>Non-Slip       | > 0,6<br>Dry and wet        | > 0,42<br>Dry and wet           | CLASS 3               | R12               | A+B+C             |
| <b>JOY</b><br>Natural           | > 0,6<br>Dry and wet        | > 0,42<br>Dry and wet           | CLASS 1               | R9                | A                 |
| <b>LARSEN</b><br>Natural        | > 0,6<br>Dry and wet        | > 0,42<br>Dry and wet           | CLASS 1               | R9                | A                 |
| <b>LENA</b><br>Bush-hammered    | > 0,6<br>Dry and wet        | > 0,42<br>Dry and wet           | CLASS 2               | R10               | A+B               |
| <b>MASAI</b><br>Bush-hammered   | > 0,6<br>Dry and wet        | > 0,42<br>Dry and wet           | CLASS 2               | R10               | A+B               |
| <b>MASAI</b><br>Non-Slip        | > 0,6<br>Dry and wet        | > 0,42<br>Dry and wet           | CLASS 3               | R12               | A+B+C             |
| <b>METEORA</b><br>Bush-hammered | > 0,6<br>Dry and wet        | > 0,42<br>Dry and wet           | CLASS 2               | R10               | A+B               |
| <b>METEORA</b><br>Non-Slip      | > 0,6<br>Dry and wet        | > 0,42<br>Dry and wet           | CLASS 3               | R12               | A+B+C             |

## NON-SLIP VALUES INALCO PRODUCTS

| COLLECTION                      | NORM<br>ASTM-C 1028-96: COF | NORM<br>ANSI A 137.1: 2012 DCOF | NORM<br>UNE-ENV 12633 | NORM<br>DIN 51130 | NORM<br>DIN 51097 |
|---------------------------------|-----------------------------|---------------------------------|-----------------------|-------------------|-------------------|
| <b>MOON</b><br>Bush-hammered    | > 0,6<br>Dry and wet        | > 0,42<br>Dry and wet           | CLASS 2               | R10               | A+B               |
| <b>MOON</b><br>Non-Slip         | > 0,6<br>Dry and wet        | > 0,42<br>Dry and wet           | CLASS 3               | R12               | A+B+C             |
| <b>OXIDE</b><br>Natural         | > 0,6<br>Dry and wet        | > 0,42<br>Dry and wet           | CLASS 1               | R9                | A                 |
| <b>PACIFIC</b><br>Natural       | > 0,6<br>Dry and wet        | > 0,42<br>Dry and wet           | CLASS 1               | R9                | A                 |
| <b>PACIFIC</b><br>Bush-hammered | > 0,6<br>Dry and wet        | > 0,42<br>Dry and wet           | CLASS 2               | R10               | A+B               |
| <b>PACIFIC</b><br>Non-Slip      | > 0,6<br>Dry and wet        | > 0,42<br>Dry and wet           | CLASS 3               | R12               | A+B+C             |
| <b>PETRA</b><br>Natural         | > 0,6<br>Dry and wet        | > 0,42<br>Dry and wet           | CLASS 2               | R10               | A+B               |
| <b>PETRA</b><br>Non-Slip        | > 0,6<br>Dry and wet        | > 0,42<br>Dry and wet           | CLASS 3               | R12               | A+B+C             |
| <b>RIFT</b><br>Natural          | > 0,6<br>Dry and wet        | > 0,42<br>Dry and wet           | CLASS 1               | R9                | A                 |
| <b>SENDA</b><br>Natural         | > 0,6<br>Dry and wet        | > 0,42<br>Dry and wet           | CLASS 2               | R10               | A+B               |
| <b>SILK</b><br>Natural          | > 0,6<br>Dry and wet        | > 0,42<br>Dry and wet           | CLASS 1               | R9                | A                 |
| <b>SILK</b><br>Bush-hammered    | > 0,6<br>Dry and wet        | > 0,42<br>Dry and wet           | CLASS 2               | R10               | A+B               |
| <b>SOHO</b><br>Bush-hammered    | > 0,6<br>Dry and wet        | > 0,42<br>Dry and wet           | CLASS 2               | R10               | A+B               |
| <b>SOHO</b><br>Non-Slip         | > 0,6<br>Dry and wet        | > 0,42<br>Dry and wet           | CLASS 3               | R12               | A+B+C             |
| <b>STORM</b><br>Natural         | > 0,6<br>Dry and wet        | > 0,42<br>Dry and wet           | CLASS 1               | R9                | A                 |
| <b>SYROS</b><br>Natural         | > 0,6<br>Dry and wet        | > 0,42<br>Dry and wet           | CLASS 1               | R9                | A                 |
| <b>TOUCHÉ</b><br>Natural        | > 0,6<br>Dry and wet        | > 0,42<br>Dry and wet           | CLASS 1               | R9                | A                 |
| <b>TOUCHÉ</b><br>Bush-hammered  | > 0,6<br>Dry and wet        | > 0,42<br>Dry and wet           | CLASS 2               | R10               | A+B               |
| <b>UMBRA</b><br>Natural         | > 0,6<br>Dry and wet        | > 0,42<br>Dry and wet           | CLASS 1               | R9                | A                 |
| <b>UMBRA</b><br>Non-Slip        | > 0,6<br>Dry and wet        | > 0,42<br>Dry and wet           | CLASS 3               | R12               | A+B+C             |
| <b>VINT</b><br>Natural          | > 0,6<br>Dry and wet        | > 0,42<br>Dry and wet           | CLASS 1               | R9                | A                 |
| <b>VINT</b><br>Bush-hammered    | > 0,6<br>Dry and wet        | > 0,42<br>Dry and wet           | CLASS 2               | R10               | A+B               |



INDUSTRIAS ALCORENSES CONFEDERADAS S.A.

C/ San Salvador, 54

12110, Alcora, Castellón (España)

(+34) 964 368 000

[www.inalco.es](http://www.inalco.es) [www.inalcotrends.com](http://www.inalcotrends.com)

