



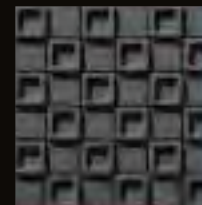
“Masu”

A *masu* is a cube-shaped vessel made from wood such as cypress, using expert techniques that do not require the use of any nails. *Masu* have been used as vessels for holding rice or sake in Japan for more than 1300 years. Today, the wonderful fragrance of their wood means they are used to drink sake in the celebratory sake barrel opening called *kagami biraki*, performed at New Year or the start of special events, as well as for the traditional Japanese bean throwing festival performed at *setsubun*. Dent Cube evokes images of *masu*, the symbol of celebration, lined up in an orderly fashion. Its unevenness creates a feeling of three dimensions and generates shadows. Combining two colors of tiles from the same series can create a space with a greater feeling of change.

DENT CUBE



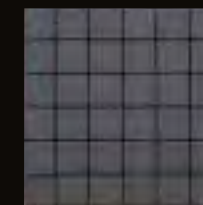
DCF-50NET/
DNC-1A



DCF-50NET/
DNC-2A



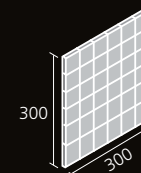
DCF-50NET/
DNC-1



DCF-50NET/
DNC-2

DCF-50NET/DNC-1A~DNC-2A

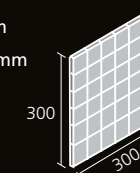
[size/pc] 47x47 mm
 [size/sht] 300x300 mm
 [thickness] 10 mm, 18 mm
 [quantity/sqm] 11.2 shts
 [quantity/carton] 10 shts
 [weight/carton] 18.5 kg



Net mounted on back
 Net color: Gray

DCF-50NET/DNC-1~DNC-2

[size/pc] 47x47 mm
 [size/sht] 300x300 mm
 [thickness] 10 mm
 [quantity/sqm] 11.2 shts
 [quantity/carton] 10 shts
 [weight/carton] 15 kg



Net mounted on back
 Net color: Gray

INSTALLATION MATERIAL AND GROUTING:

Adhesive ○ Mortar x Grouting x

NOTE:

Gray net may be visible from between joints.
 Colors may vary even within the same batch.



