

cladding series ●



cladding

Island Stone™



Sandstone Mint rustic w/ Silver Quartzic rustic > CR1SM w/ CR1QS

breathtaking cladding

The stunning form of **Island Stone's cladding** series introduces a whole new world of possibilities.

Precision-cut stones in a range of both natural and finished surfaces enrich the color, beauty and drama of the raw material, transforming it into a truly unique design element. Individually they are beautiful, en-masse they are simply breathtaking.

The claddings versatility allows more creative freedom to design unique installations that become the centerpiece of any environment. The dramatic way an island stone clad surface throws light is truly magical.

Detailed in appearance but simple to install, **Island Stone claddings** bring surfaces to life.

design attributes

stones & surfaces

cladding range created from exclusive exotic materials for original surfaces.

natural face > our textures relief reflects the rugged personality of rock walls.

finished > final surface finishes to stone for creating original unique surfaces.

formats

strips > A subtle combination of architectural design and natural surfaces.

vtile & slat > Our innovative wedges opens a new dimension to designing modern surfaces.

interlocking patterns > Our multi-piece patterns generates distinct random surface.



Silver Quartzitic Slate VTile> CR20S

vtiles > opening a new dimension in design

- > The vtile's distinctive wedge shape is an original innovation from **Island Stone**. Arguably the most versatile natural stone material on the market, its unique 3-dimensional structure offers designers a myriad of approaches to creating dramatic contemporary designs. The points below outline what areas to consider when looking to create original distinctive vtile designs.

design ideas

> laying direction options

Vertical > Popular with smaller, taller surfaces, vertical vtile designs give surface a stronger, imposing presence.

Horizontal > The most common approach, bringing a wall to life with a distinct eye catching background.

Varying directions (stacked placement) > Creates a complex illusion of shapes as light plays over the crisscross wedges.

> profile > placement

Wave > Placing vtiles back to back to create an undulating surface with a natural personality.

Stack > Placing vtiles in the same directional manner to create powerful geometric designs.



> elevation > offsets

How an individual vtile is placed as relates to the piece placed prior.



designs inspiration > single format

Using a 2" x12" sandstone mint vtile we showcase below a small selection of the many popular, easy to install layouts for vtiles.

All approaches can be used with our 2"x16" and 4"x16" vtiles for creating similarly distinctive surface



vtile > stacked > 25% offset



vtile > wave > 25% offset



slat tile > wave > 100% offset, opposing directions



vtile > wave > 100% offsets



vtile > stacked > 50% offsets



vtile tile > stacked > 50% offset, opposing directions

designs inspiration > multi format

Using 2" x12" and 4" x16" sandstone mint vtiles we showcase below a small selection of variations achievable through combining multiple vtile formats



vtiles > 1 to 1 stacked > 50% offset



vtiles > 1 to 1 wave > 50% offset



vtiles > 2 to 1, wave stack combo



vtiles > 1 to 1 stacked > 50% offset opp. directions



vtiles > 2 to 1, wave stack combo



vtiles > 2 to 1 stacked > 50% offset opp. directions

* see "How-to Tips" in the resource section of www.islandstone.com for detailed instruction on achieving these along with many other original layouts



slat tile

Taking Island Stones exclusive wedge in a whole new direction



slat

CT2 > interlocking wedge pattern

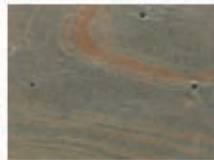
2.0" x 12.0" x 0.4 - 0.8"

tile surface > honed

colors



JB >
hitam black



QC >
copper quartzitic slate



QS >
silver quartzitic slate



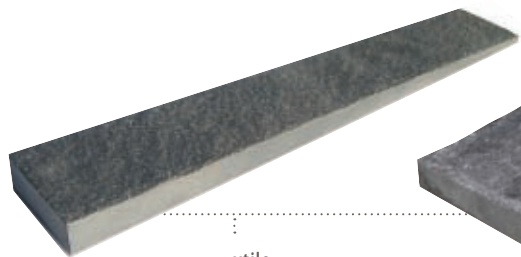
WP >
tropical white



>

natural face vtiles

Dramatic relief enhancing a natural appeal.



vtile

CR2 > wedge

1.9" x 11.8" x 0.4" - 0.8"

tile surface > split face

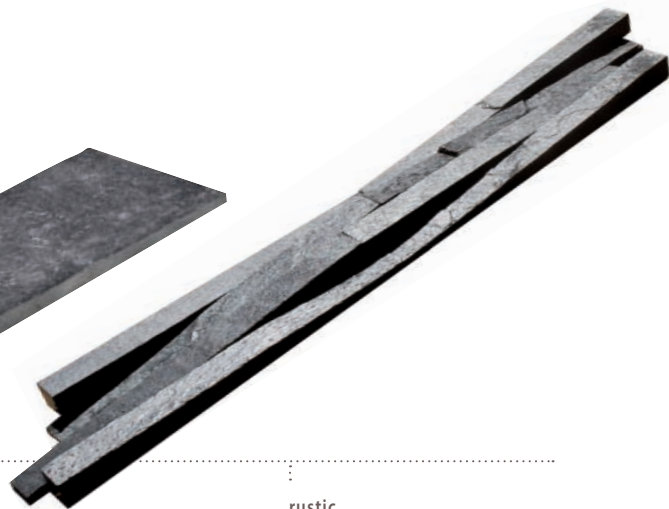


large vtile

CR4 > wedge

4.0" x 15.8" x 0.4" - 0.8"

tile surface > split face



rustic

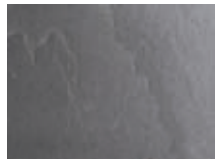
CR1 > interlocking wedge pattern

4.0" x 24.0" x 0.4 - 0.8"

stone size > 1.0" x 12.0"

tile surface > split face

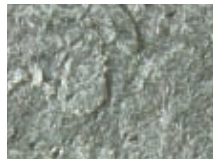
colors



BM >
sutra black



QC >
copper quartzitic slate



QS >
silver quartzitic slate



SA >
sandstone autumn



SG >
sandstone grey



SM >
sandstone mint



finish surface vtiles

> Creative, modern, architectural design.



vtile II

CR7 > wedge

2.0" x 15.4" x 0.4" - 0.8"

tile surface > honed/flamed

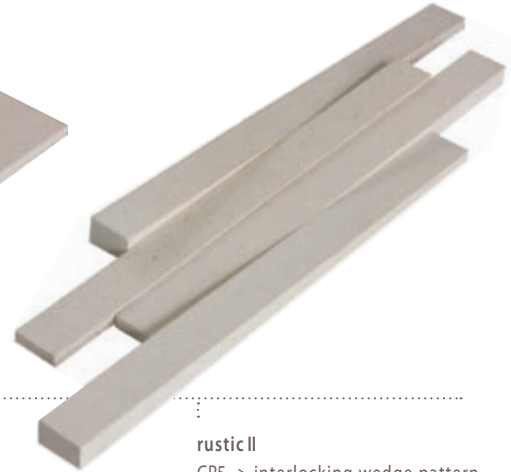


large vtile

CR4 > wedge

4.0" x 15.4" x 0.4" - 0.8"

tile surface > honed/flamed



rustic II

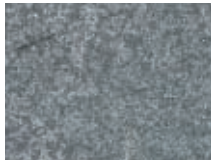
CR5 > interlocking wedge pattern

4.8" x 15.4" x 0.4" - 0.8"

stone size > 1.0" x 12.0"

tile surface > honed/flamed

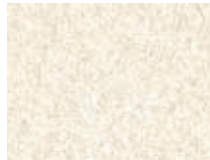
colors



AKF >
flecked andesite (flamed)



BL >
temple lava (honed)



WP >
tropical white (honed)



Silver Quartzitic Slate Strip > Random Offset > CS1QS

>

Natural Faced Claddings

A subtle reflection of nature offered in both pre-defined and customizable designs



strip

CS1 > rectangle

1.9" x 11.8" x 0.4

tile surface > split faced/flamed

large trip

CS2 > rectangle

2.5" x 15.8" x 0.4

tile surface > split faced

parallels

CI2 > interlocking tile

6.8" x 11.4" x 0.5"

stone widths > 1.2"/1.9"/2.5"

tile surface > split faced

colors



AKF >
flecked andesite
(flamed) (CS1 Only)



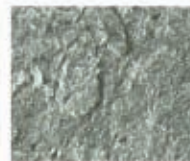
HB >
himachal black
(CS1 & CS2 Only)



QC >
copper quartzitic slate
(CS1 & CS2 Only)



HW >
himachal white



QS >
silver quartzitic slate



GD >
golden slate
(CI2 Only)



BM >
sutra black
(CI2 Only)



Grey Andesite Uniform > 25% Offset > CR8AGC

uniform interlocking strips

Technical surfaces for modern architectural design.



uniform

CL1 > interlocking tile

4.8" x 15.4" x 0.4 - 0.8"

stone size > 1.3" x 15.8"

tile surface > chipped/flamed

colors



AGC >
grey andesite (chipped)



AGX >
andesite (chipped & flamed)



AKF >
flecked andesite (flamed)



Mint Sandstone Large vtile > 50% Offset > CR4SM

bringing
surface
to life



I s l a n d S t o n e™

installation & specifications

> While capable of creating the most complex surfaces, the installation of **Island Stone Cladding** is simple, utilizing a basic building block approach and requiring no grout. Many stones have been tested and approved for interior and exterior installations and wet environments.

www.islandstone.com

- > Step by Step installation guidelines and instructions.
- > Design guides showcasing how to achieve popular vtile designs.
- > Additional installation photos showcasing a wider range of design options.
- > Video tutorials on designing with vtiles.
- > Instructions on approaches to installing vtiles around corners.

got a smart phone?

> Watch our online vtile design video on your phone!
Requires the microsoft tag application available at:
<http://gettag.mobi>





I s l a n d S t o n e™

the most exciting tiles and claddings in the world™



for further information or your nearest supplier, please visit:

islandstone.com

Note: While every effort has been made to capture a true likeness to color, color samples and photographs seen in this publication may not be an exact color match of product.

All images © Island Stone International Ltd, 2010 > © Island Stone International Ltd, 2010. All rights reserved