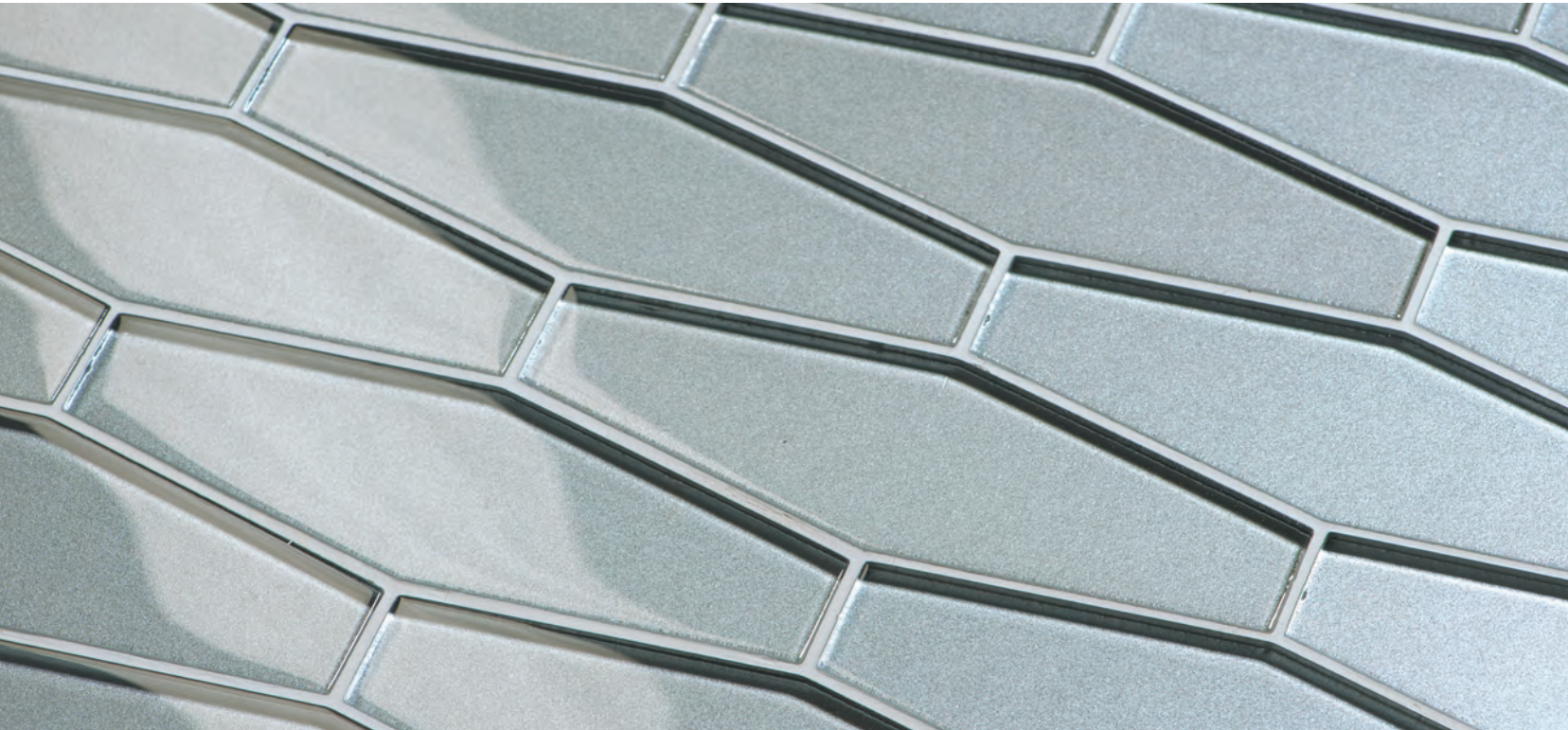


ASTORIA

LUMINOUS • MODERN • SOPHISTICATED



Sonoma
TILEMAKERS

ASTORIA



3x9 IN GIN FIZZ SILK.

LUMINOUS
MODERN
SOPHISTICATED

ASTORIA



Astoria brings all the dazzle, elegance, and flair
in modern-cut classic forms
with just the right amount of shimmer.

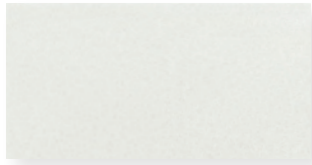
We have selected the most serene
color palette – dusty hues in metallic gloss
for a more sophisticated look, or
metallic silk for a nuanced effect.

For grand hotels, resorts and spas,
restaurants and bars – or for the
residential metropolitan or coast haven –
Astoria is sophisticated,
soothing and elegantly modern.

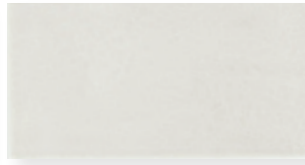
ASTORIA

COLOR PALETTE

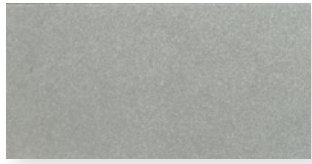
VARIATION IN SIZE, COLOR AND SHADE TO BE EXPECTED.



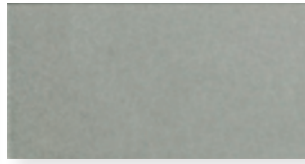
BERGAMOT GLOSS



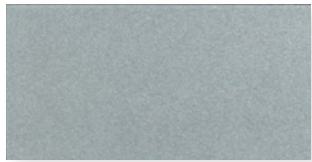
BERGAMOT SILK



FRENCH 75 GLOSS



FRENCH 75 SILK



SIDECAR GLOSS



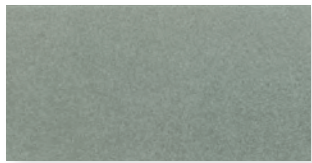
SIDECAR SILK



GIBSON GLOSS



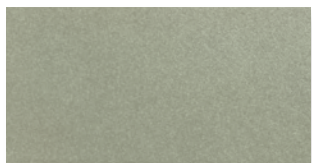
GIBSON SILK



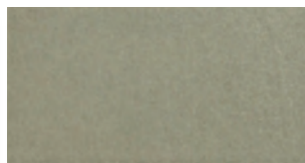
GIN FIZZ GLOSS



GIN FIZZ SILK



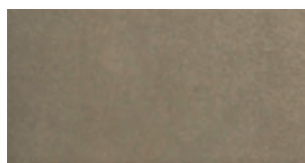
MOSCOW MULE GLOSS



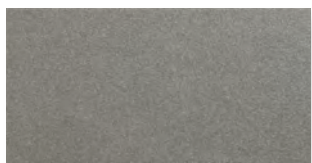
MOSCOW MULE SILK



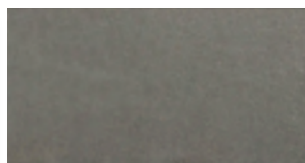
SOUTHSIDE GLOSS



SOUTHSIDE SILK



MANHATTAN GLOSS



MANHATTAN SILK

(FACING):
TUMBLER IN GIBSON GLOSS (TOP)
AND GIBSON SILK (BOTTOM)



ASTORIA

BERGAMOT

AVAILABLE IN GLOSS AND SILK.



FLUTE STACKED | $\frac{3}{16} \times 4\frac{7}{8}$
(MESH MOUNTED)



FLUTE HERRINGBONE | $\frac{3}{16} \times 4\frac{7}{8}$
(MESH MOUNTED)



HIGHBALL | $6\frac{7}{8} \times 2\frac{1}{4}$
(MESH MOUNTED)



TUMBLER | $4\frac{1}{2} \times 2\frac{1}{2}$
(MESH MOUNTED)



3x6



3x9



6x12

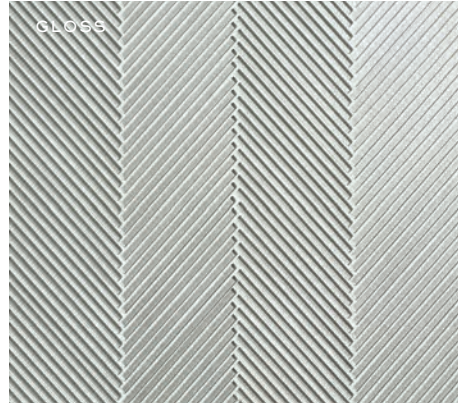


TRIM
STIR STICK
 $\frac{1}{4} \times 12$

ASTORIA



FLUTE STACKED | $\frac{3}{16} \times 4 \frac{7}{8}$
(MESH MOUNTED)



FLUTE HERRINGBONE | $\frac{3}{16} \times 4 \frac{7}{8}$
(MESH MOUNTED)



HIGHBALL | $6 \frac{7}{8} \times 2 \frac{1}{4}$
(MESH MOUNTED)



TUMBLER | $4 \frac{1}{2} \times 2 \frac{1}{2}$
(MESH MOUNTED)



3x6



3x9



6x12



TRIM

STIR STICK
 $\frac{1}{4} \times 12$

FRENCH 75

AVAILABLE IN GLOSS AND SILK.

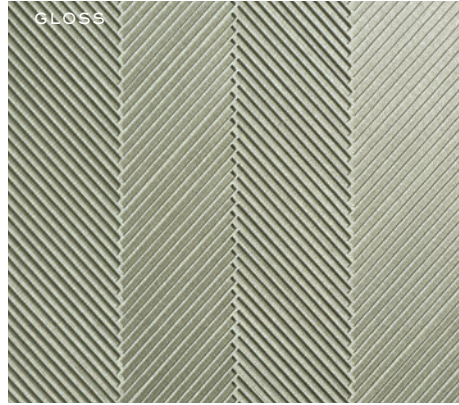
ASTORIA

MOSCOW MULE

AVAILABLE IN GLOSS AND SILK



FLUTE STACKED | $\frac{3}{16} \times 4\frac{7}{8}$
(MESH MOUNTED)



FLUTE HERRINGBONE | $\frac{3}{16} \times 4\frac{7}{8}$
(MESH MOUNTED)



HIGHBALL | $6\frac{7}{8} \times 2\frac{1}{4}$
(MESH MOUNTED)



TUMBLER | $4\frac{1}{2} \times 2\frac{1}{2}$
(MESH MOUNTED)



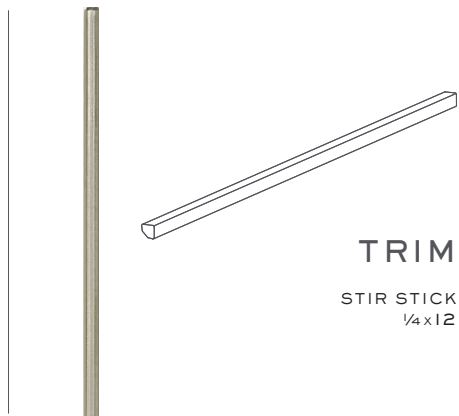
3x6



3x9



6x12



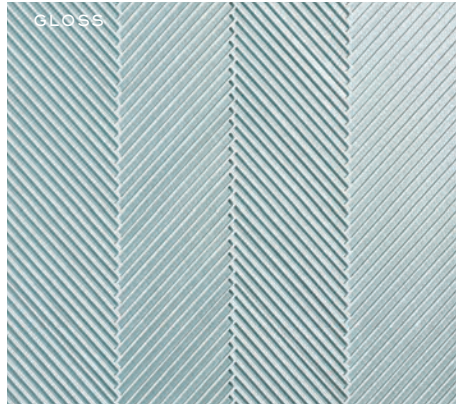
TRIM

STIR STICK
 $\frac{1}{4} \times 12$

ASTORIA



FLUTE STACKED | $\frac{3}{16} \times 4\frac{7}{8}$
(MESH MOUNTED)



FLUTE HERRINGBONE | $\frac{3}{16} \times 4\frac{7}{8}$
(MESH MOUNTED)



HIGHBALL | $6\frac{7}{8} \times 2\frac{1}{4}$
(MESH MOUNTED)



TUMBLER | $4\frac{1}{2} \times 2\frac{1}{2}$
(MESH MOUNTED)



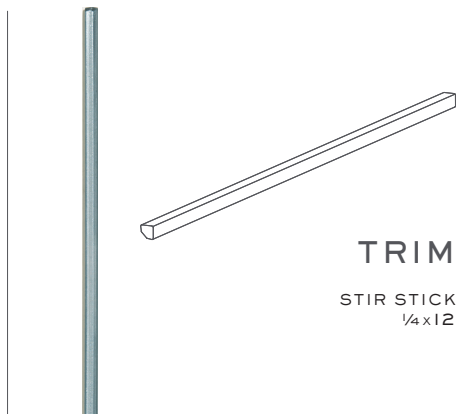
3x6



3x9



6x12



TRIM

STIR STICK
 $\frac{1}{4} \times 12$

GIBSON

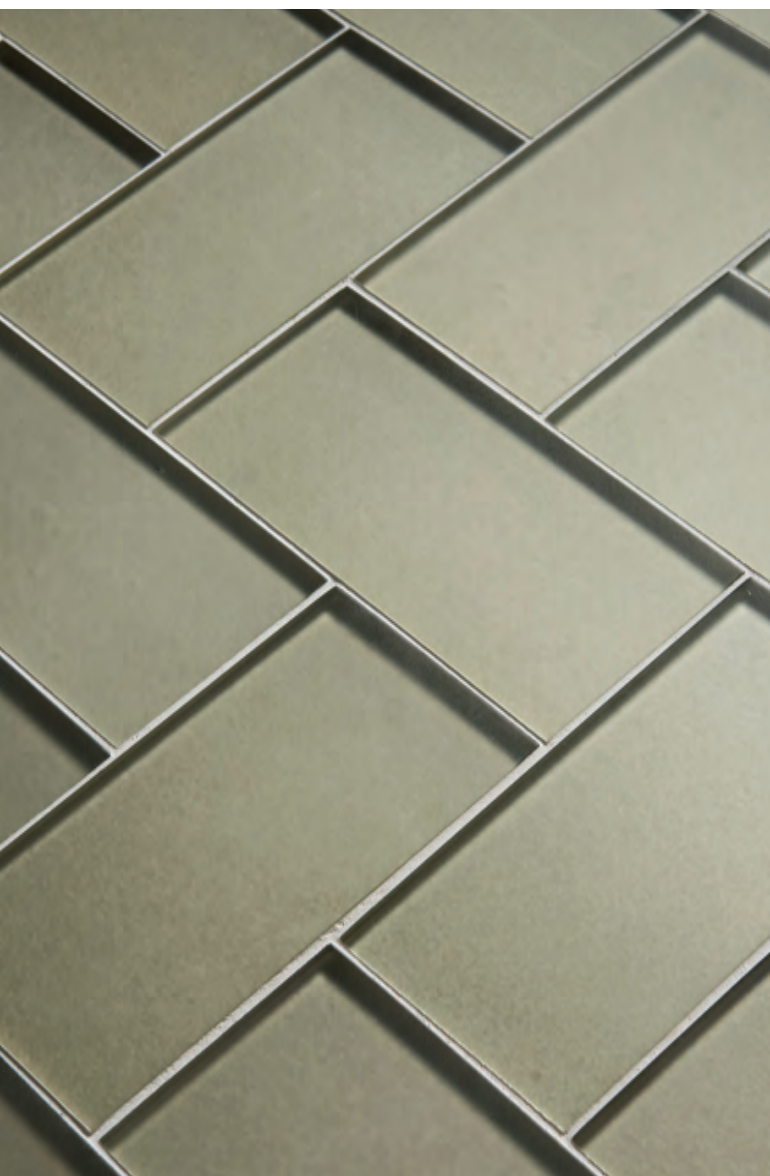
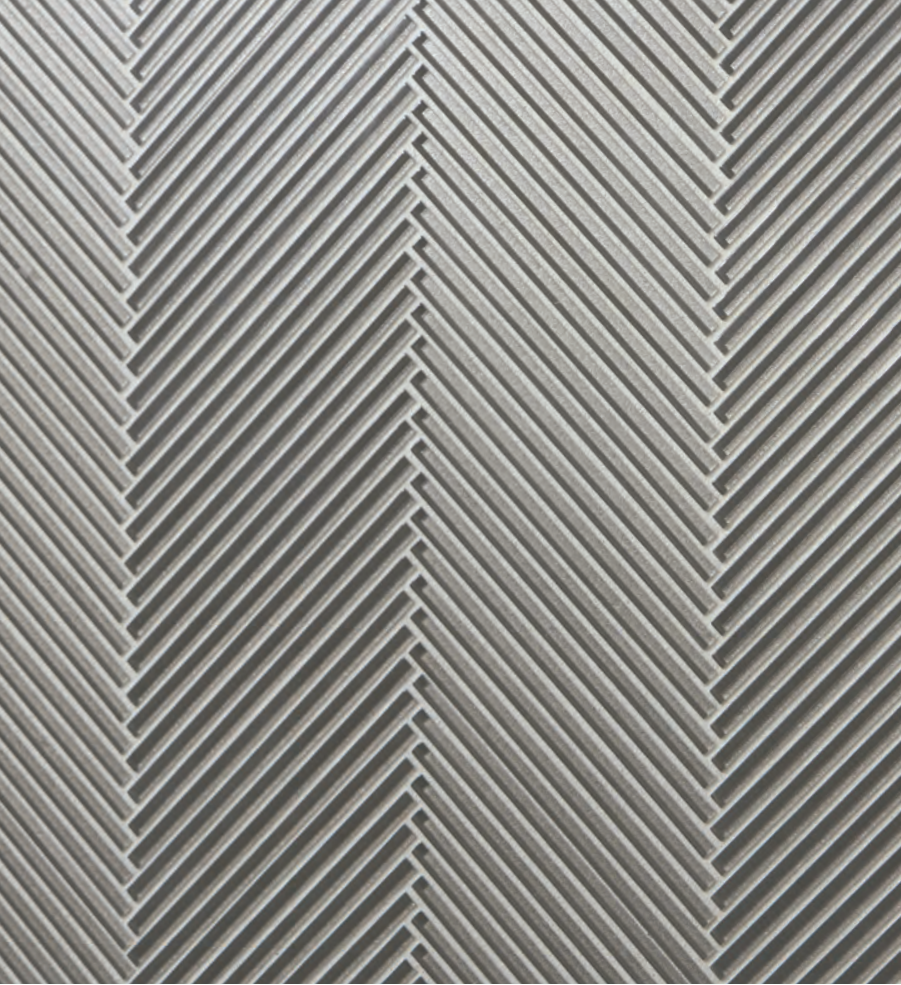
AVAILABLE IN GLOSS AND SILK

ASTORIA



(ABOVE): HIGHBALL IN BERGAMOT SILK
CREDIT: KRISTINE KAY INTERIORS / DAVID SPARKS PHOTOGRAPHY

(FACING, CLOCKWISE FROM TOP):
FLUTE IN FRENCH 75 GLOSS, 6x12 IN MANHATTAN GLOSS,
HIGHBALL IN MANHATTAN GLOSS AND SILK,
TUMBLER IN FRENCH 75, 3x6 IN MANHATTAN & SOUTHSIDE SILK,
3x6 IN MOSCOW MULE SILK



ASTORIA

SOUTHSIDE

AVAILABLE IN GLOSS AND SILK.



FLUTE STACKED | $\frac{3}{16} \times 4\frac{7}{8}$
(MESH MOUNTED)



FLUTE HERRINGBONE | $\frac{3}{16} \times 4\frac{7}{8}$
(MESH MOUNTED)



HIGHBALL | $6\frac{7}{8} \times 2\frac{1}{4}$
(MESH MOUNTED)



TUMBLER | $4\frac{1}{2} \times 2\frac{1}{2}$
(MESH MOUNTED)



3x6



3x9



6x12



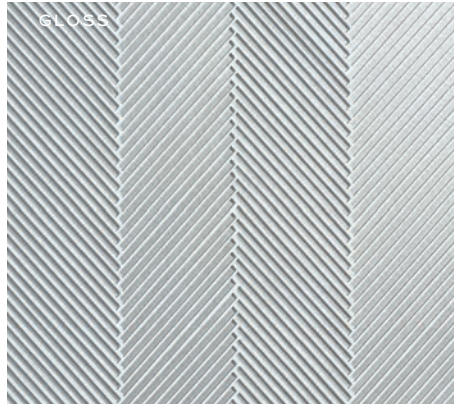
TRIM

STIR STICK
 $\frac{1}{4} \times 12$

ASTORIA



FLUTE STACKED | $\frac{3}{16} \times 4\frac{7}{8}$
(MESH MOUNTED)



FLUTE HERRINGBONE | $\frac{3}{16} \times 4\frac{7}{8}$
(MESH MOUNTED)



HIGHBALL | $6\frac{7}{8} \times 2\frac{1}{4}$
(MESH MOUNTED)



TUMBLER | $4\frac{1}{2} \times 2\frac{1}{2}$
(MESH MOUNTED)



3x6



3x9



6x12



SIDECAR

AVAILABLE IN GLOSS AND SILK

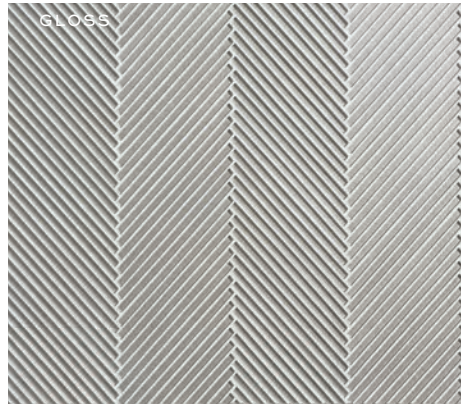
ASTORIA

MANHATTAN

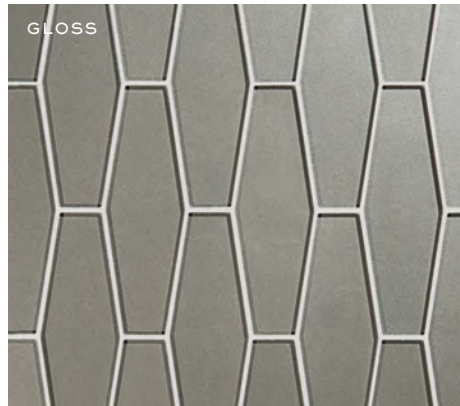
AVAILABLE IN GLOSS AND SILK.



FLUTE STACKED | $\frac{3}{16} \times 4\frac{7}{8}$
(MESH MOUNTED)



FLUTE HERRINGBONE | $\frac{3}{16} \times 4\frac{7}{8}$
(MESH MOUNTED)



HIGHBALL | $6\frac{7}{8} \times 2\frac{1}{4}$
(MESH MOUNTED)



TUMBLER | $4\frac{1}{2} \times 2\frac{1}{2}$
(MESH MOUNTED)



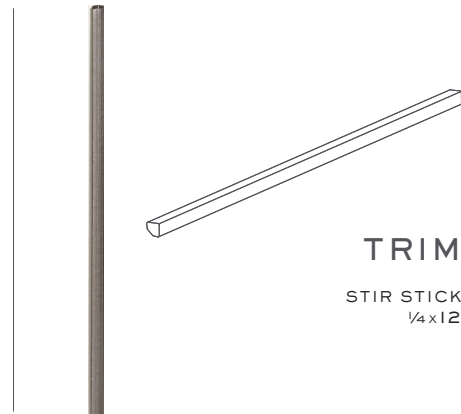
3x6



3x9



6x12

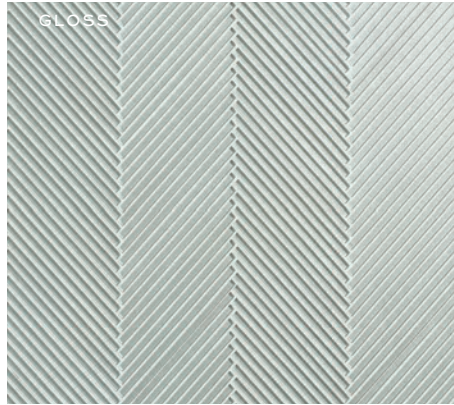


TRIM
STIR STICK
 $\frac{1}{4} \times 12$

ASTORIA



FLUTE STACKED | $\frac{3}{16} \times 4\frac{7}{8}$
(MESH MOUNTED)



FLUTE HERRINGBONE | $\frac{3}{16} \times 4\frac{7}{8}$
(MESH MOUNTED)



HIGHBALL | $6\frac{7}{8} \times 2\frac{1}{4}$
(MESH MOUNTED)



TUMBLER | $4\frac{1}{2} \times 2\frac{1}{2}$
(MESH MOUNTED)



3x6



3x9



6x12



TRIM

STIR STICK
 $\frac{1}{4} \times 12$

GIN FIZZ

AVAILABLE IN GLOSS AND SILK.

ASTORIA

LUMINOUS • MODERN • SOPHISTICATED



Astoria combines the classic forms you imagine with light-catching glass and metallic colorways, creating luminous, elegant ambiance. Choose from a selection of dusty hues curated by our design team in gloss or silk finishes and add a little shimmer to your space.

AT-A-GLANCE

- 8 COLORS AVAILABLE IN GLOSS AND SILK
- 6 SIZES:
3x6, 3x9, 6x12, HIGHBALL, TUMBLER, FLUTE
- STIR STICK TRIM
- SHIPS WITHIN 24-48 HOURS

APPLICATIONS

- INTERIOR WALLS
- NOT SUITABLE FOR ANY SUBMERGED WATER AREAS OR APPLICATIONS WHERE WATER CAN ACCUMULATE (NO STEAM)

JUST SO YOU KNOW...

- Astoria Flute is 4mm thick. All other sizes 8mm thick.
- Highball, Tumbler and Flute are mesh mounted
- Must be cut very slowly to achieve the best cut
- "Stir Stick" is a finish trim shown in photo above
- Variation in color and metallic texture such as small imperfections (lines, dots, wrinkles) in the backing may be present and can be visible once installed. These are natural characteristics of the handcrafted process and do not affect the integrity of the tile.

FOR MORE DETAILED INFORMATION, VISIT [SONOMATILEMAKERS.COM](https://sonomatilemakers.com)

We are committed to delivering the highest quality handcrafted tile to you. Variation in shade, texture and size are inherent characteristics of our handcrafted tile. Always inspect your tiles before they are installed as installation constitutes acceptance.



sonomatilemakers.com