

# MIRAZUR

---

VIBRANT • ARTISANAL • RECYCLED



*Sonoma*  
TILEMAKERS



# URSO



PRADO | URSO CRACKLE  
5 1/8 x 4 1/2



COPA | URSO CRACKLE  
2 3/4 x 8 3/4



2 1/2 x 10 | URSO CRACKLE



TRIM | URSO CRACKLE  
5/8 x 10

# ZARANDA



PRADO | ZARANDA MATTE  
5 1/8 x 4 1/2



COPA | ZARANDA MATTE  
2 3/4 x 8 3/4



2 1/2 x 10 | ZARANDA MATTE



TRIM | ZARANDA MATTE  
5/8 x 10

VIBRANT  
ARTISANAL  
RECYCLED

# MIRAZUR

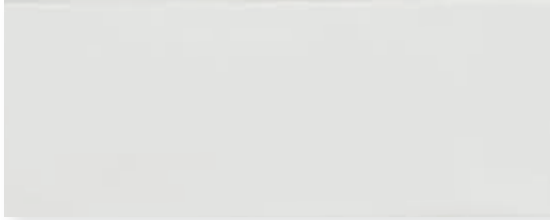


Casting visions of the European seaside, Mirazur roughly translates to “looking out at the blue ocean”. The undulating surface with refined imperfection captures just the right amount of light over a modern and vibrant color palette. An exceptional choice for a range of applications and styles, Mirazur brings fresh, upscale style to any space. Sustainably made in Spain, each piece truly creates natural beauty from the inside out.

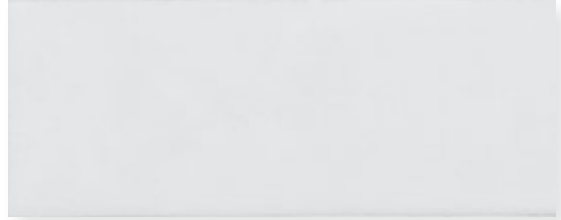
# MIRAZUR

## COLOR PALETTE

VARIATION IN SIZE, COLOR AND SHADE TO BE EXPECTED.



ANDALUCIA (MATTE)



LA BLANCA (CRACKLE)



IBIZA (CRACKLE)



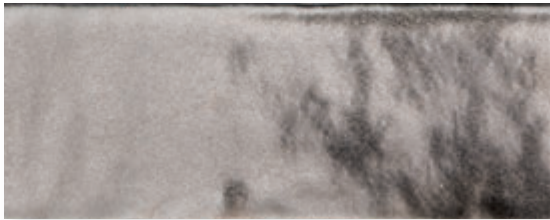
DELFINA (CRACKLE)



SEVILLE (CRACKLE)



MARBELLA (CRACKLE)



MIRO (METALLIC)



BAHIA (CRACKLE)



URSO (CRACKLE)



ZARANDA (MATTE)

(FACING):  
COPA IN DELFINA (TOP),  
PRADO IN BAHIA, ZARANDA AND MIRO (LEFT),  
2<sup>1</sup>/<sub>2</sub>x10 IN ANDALUCIA(RIGHT)



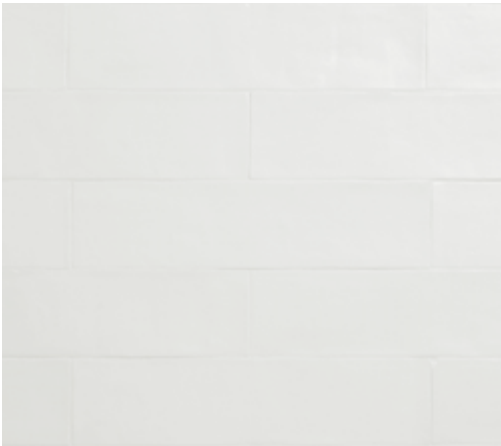
## ANDALUCIA



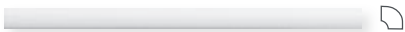
PRADO | ANDALUCIA MATTE  
5 1/8 x 4 1/2



COPA | ANDALUCIA MATTE  
2 3/4 x 8 3/4



2 1/2 x 10 | ANDALUCIA MATTE



TRIM | ANDALUCIA MATTE  
5/8 x 10

## LA BLANCA



PRADO | LA BLANCA CRACKLE  
5 1/8 x 4 1/2



COPA | LA BLANCA CRACKLE  
2 3/4 x 8 3/4



2 1/2 x 10 | LA BLANCA CRACKLE



TRIM | LA BLANCA CRACKLE  
5/8 x 10

# IBIZA



PRADO | IBIZA CRACKLE  
5 1/8 x 4 1/2



COPA | IBIZA CRACKLE  
2 3/4 x 8 3/4



2 1/2 x 10 | IBIZA CRACKLE



TRIM | IBIZA CRACKLE  
5/8 x 10



DETAILS  
MATTER

PRADO IN ZARANDA (TOP),  
TRIM AND COPA IN DELFINA (BOTTOM)



## SEVILLE



PRADO | SEVILLE CRACKLE  
5 1/8 x 4 1/2

## MARBELLA



PRADO | MARBELLA CRACKLE  
5 1/8 x 4 1/2



COPA | SEVILLE CRACKLE  
2 3/4 x 8 3/4



COPA | MARBELLA CRACKLE  
2 3/4 x 8 3/4



2 1/2 x 10 | SEVILLE CRACKLE



2 1/2 x 10 | MARBELLA CRACKLE



TRIM | SEVILLE CRACKLE  
5/8 x 10



TRIM | MARBELLA CRACKLE  
5/8 x 10

# DELFINA



PRADO | DELFINA CRACKLE  
5 1/8 x 4 1/2



COPA | DELFINA CRACKLE  
2 3/4 x 8 3/4



2 1/2 x 10 | DELFINA CRACKLE



TRIM | DELFINA CRACKLE  
5/8 x 10

# BAHIA



PRADO | BAHIA CRACKLE  
5 1/8 x 4 1/2



COPA | BAHIA CRACKLE  
2 3/4 x 8 3/4



2 1/2 x 10 | BAHIA CRACKLE



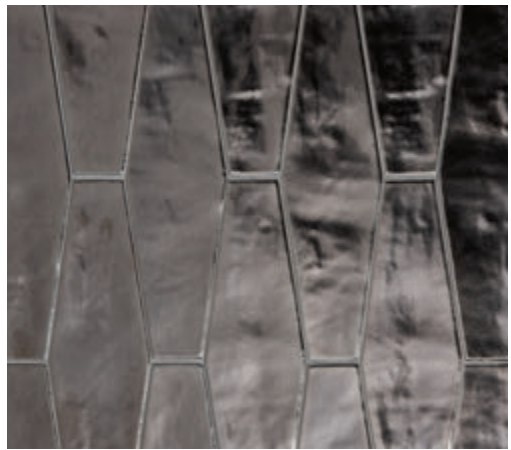
TRIM | BAHIA  
5/8 x 10



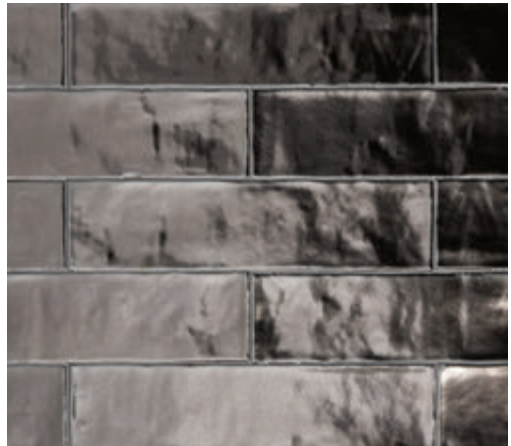
## MIRO



PRADO | MIRO METALLIC  
5<sup>1</sup>/<sub>8</sub>x4<sup>1</sup>/<sub>2</sub>



COPA | MIRO METALLIC  
2<sup>3</sup>/<sub>4</sub>x8<sup>3</sup>/<sub>4</sub>



2<sup>1</sup>/<sub>2</sub>x10 | MIRO METALLIC



TRIM | MIRO METALLIC  
5<sup>5</sup>/<sub>8</sub>x10

# MIRAZUR

VIBRANT • ARTISANAL • RECYCLED



Curated in 10 relevant hues. Mirazur's versatile style is an exceptional choice for a range of applications. Bringing fresh, upscale style to any space.

## AT-A-GLANCE

- **10 COLORS**
- **3 FIELD SIZES: PRADO, COPA, 2<sup>1</sup>/<sub>2</sub>x10**
- **10" TRIM PIECE WORKS WITH ALL SHAPES**
- **QUICKSHIP**

## APPLICATIONS

- **INTERIOR WALLS**
- **SHOWERS (CRACKLES MUST BE SEALED)**

\*See Tech Info for more details at [sonomatilemakers.com](http://sonomatilemakers.com)

## JUST SO YOU KNOW...

- Variation in color, size, shade and surface texture will be present. The natural 'imperfect' characteristics of the Mirazur field body is part of the handcrafted process and does not affect the integrity of the tile.
- Clay body comprised of high recycled content.
- Crackle glazes must be sealed and require periodic maintenance. Some water-related darkening may still occur.
- Test all dark grouts on crackles prior to installation.

FOR MORE DETAILED INFORMATION, VISIT [SONOMATILEMAKERS.COM](http://SONOMATILEMAKERS.COM)

*We are committed to delivering the highest quality handcrafted tile to you. Variation in shade, texture and size are inherent characteristics of our handcrafted tile. Always inspect your tiles before they are installed as installation constitutes acceptance.*



[sonomatilemakers.com](http://sonomatilemakers.com)